



REPUBLIC OF TÜRKİYE
ALTINBAŞ UNIVERSITY
Institute of Graduate Studies
Mechanical Engineering

**ENERGY SPACE COOLING SYSTEM SAVING
AND SHAITING WITH PHASE CHANGE
MATERIALS**

Moamin Jameel Jumaah ALKETHAWI

Master's Thesis

Supervisor

Asst. Prof. Dr. Yaser ALAIWI

İstanbul, 2024

**ENERGY SPACE COOLING SYSTEM SAVING AND SHAITING
WITH PHASE CHANGE MATERIALS**

Moamin Jameel Jumaah ALKETHAWI

Mechanical Engineering

Master's Thesis

ALTINBAŞ UNIVERSITY

2024

This thesis title ENERGY SPACE COOLING SYSTEM SAVING AND SHAITING WITH PHASH CHANGE MATERIALS prepared by MOAMIN JAMEEL JUMAAH ALKETHAWI and submitted on 10/01/2024 has been **accepted unanimously** for the degree of Master of Science in Mechanical Engineering.

Asst. Prof. Dr. Yaser ALAIWI

Signature

Thesis Defense Committee Members:

Asst. Prof. Dr. Yaser ALAIWI

Department of Mechanical
Engineering,
Altınbaş University

Asst. Prof. Dr. Abdullahi Abdu
IBRAHIM

Department of Computer
Engineering,
Altınbaş University

Asst. Prof. Dr. Haydar İzzettin
KEPEKÇI

Department of Mechatronics
Engineering,
İstanbul Gelişim University

I hereby declare that this thesis meets all format and submission requirements of a Master's thesis.

I hereby declare that all information/data presented in this graduation project has been obtained in full accordance with academic rules and ethical conduct. I also declare all unoriginal materials and conclusions have been cited in the text and all references mentioned in the Reference List have been cited in the text, and vice versa as required by the abovementioned rules and conduct.

Moamin Jameel Jumaah ALKETHAWI

Signature



DEDICATION

To begin, I would like to express my gratitude to Allah, the Highest, for providing me with the mental and physical capacity, as well as the direction, wisdom, information, and expertise necessary to finish this research.

This thesis is completely and utterly devoted to my mother and father. There are no words that can adequately convey what you mean to me, and there is nothing that can make up for what you have done for me. There is nothing that I can compensate you for. I shall keep doing everything in my power to live up to the standards you have set. In conclusion, I would want to express my gratitude to my family, other relatives, and the friends who have supported me throughout this research.

ABSTRACT

ENERGY SPACE COOLING SYSTEM SAVING AND SHAITING WITH PHASE CHANGE MATERIALS

ALKETHAWI, Moamin Jameel Jumaah

M.Sc., Mechanical Engineering, Altınbaş University,

Supervisor: Asst. Prof. Dr. Yaser

ALAIWI Date: January / 2024

Pages: 57

In contemporary times, there has been a marked escalation in energy use, largely driven by the Industrial Renaissance. This uptick poses environmental challenges, especially since 30-40% of global energy consumption originates from residential and commercial infrastructures. Addressing these concerns, researchers have been gravitating towards methods that curtail energy usage within buildings. Our study presents and assesses an innovative floor cooling system, harnessing the energy retention and release capabilities of phase change materials (PCMs). We delve into the potential of paraffin and water in maintaining a pleasant indoor ambiance. Initial findings suggest that paraffin can consistently moderate temperatures between 22-27°C. The transition times for paraffin between liquid and solid states were measured at 150 minutes and 180 minutes, respectively. Incorporating paraffin led to a ground surface temperature decrease of about 1.5-2.5°C. The research highlights the promise of PCMs in boosting energy efficiency, spotlighting their relevance in cooling mechanisms. Utilizing PCMs can usher in substantial energy conservation in buildings, paving the way for a greener tomorrow. This comprehensive abstract offers a richer insight into our study's scope and findings.

Keywords: Phase Change Materials, Paraffin, Melting, Solidification, PCMs.

TABLE OF CONTENTS

	<u>Pages</u>
ABSTRACT	vi
LIST OF TABLES	ix
LIST OF FIGURES	x
ABBREVIATIONS	xii
LIST OF SYMBOLS	xiii
1. INTRODUCTION	1
1.1 PHASE CHANGE MATERIAL	1
1.2 THERMAL ENERGY STORAGE (TES)	2
1.2.1 TES Advantages	2
1.2.2 TES Disadvantages	3
1.3 WATER-COOLED FLOOR	3
1.4 HUMAN THERMAL COMFORT CRITERIA	3
1.5 PROBLEM DEFINITION	4
1.6 SOLUTION OF THE PROBLEM.....	4
1.7 THERMAL INSULATION AND FLOOR REFLECTION COATING.....	4
1.8 OBJECTIVE PLAN OF THE PRESENT WORK	5
2. LITERATURE REVIEW	6
3. METHODOLOGY	20
3.1 ANALYTICAL MODEL OF TES	22
3.1.1 Convection Heat Transfer Inside Pipe	22
3.1.2 Convection Heat Transfer In Pcm.....	22
3.2 GOVERNING EQUATION AND HEAT TRANSFER INSIDE PCM.....	23
3.3 NUMERICAL SIMULATION OF TES.....	24

3.4 COOLING LOAD CALCULATIONS	24
3.4.1 External and Internal Film Wall Resistances	25
3.4.2 Roofs, Walls, and Conduction Through Glass	25
3.4.3 Heat Gain From Transparent Window	25
3.4.4 Heat Gain From Internal Resources	26
3.5 HEAT GAIN FROM AIR INFILTRATION	27
3.6 GEOMETRY CREATION AND MESH GENERATION.....	28
3.7 BOUNDARY AND INITIAL CONDITION.....	29
4. RESULTS AND DISSCUSIONS	30
4.1 CHARGING PROCESS	30
4.2 DISCHARGING PROCESS	32
4.3 TEMPERATURE VARIATIONS WITHOUT PCM.....	34
4.4 TEMPERATURE VARIATIONS WITH PCM.....	36
5. CONCLUSIONS AND FUTURE WORK.....	39
REFERENCES	40

LIST OF TABLES

	<u>Pages</u>
Table 2.1: Previous Studies Remarks and Results.....	19
Table 3.1: External Heat Transfer Coefficient.	25
Table 3.2: SHGmax W/m ² Average Values of South Faced with Latitude 33°N.	26
Table 3.3: CLF Values of South Faced Glass with Back Shadowed Side.	26
Table 4.1: Comparison of Temperature Reduction for Previous Articles.	37



LIST OF FIGURES

	<u>Pages</u>
Figure 1.1: The Main Categories of the Pcms.....	1
Figure 1.2: Thermal Energy Storage Types.	2
Figure 2.1: (A) Temperature Variation and (B) Maximum Temperature in Mortar.	6
Figure 2.2: (A) Examined System with Heat Pump. (B) PCM Floor [7].	7
Figure 2.3: Structure of the PCM-Concrete Floor [11, 12].....	8
Figure 2.4: Schematic of PCM-Electric Heating Systems [14-15].....	8
Figure 2.5: Structure of System and the Heat Balance on the Floor [16].	9
Figure 2.6: An Underfloor Cooling System Incorporated Packed Bed PCM.	10
Figure 2.7: Geometric Model of the Simulated Bedroom [20].	11
Figure 2.8: (A) The Homogenous Floor (B) The Multilayer Floor [21].....	12
Figure 2.9: The Floor Panel with Hollows to Contain PCM During Day and Night [22]...	13
Figure 2.10: Cross-Section of the Prototype and the Floor Assembly [24].	14
Figure 3.1: Thermal Energy Storage Counter Flow Counter is Designed.	22
Figure 3.2: Graphical User Interface of the Software.....	27
Figure 3.3: Steps Calculation of Cooling Load.	28
Figure 3.4: Mesh Generation Results.....	29
Figure 4.1: Volume-Average of Liquid Fraction with Time.....	30
Figure 4.2: Charging Process After (0) Mints.	31
Figure 4.3: Charging Process After (30) Mints.	31
Figure 4.4: Charging Process After (60) Mints.	31
Figure 4.5: Charging Process After (90) Mints.	32
Figure 4.6: Charging Process After (120) Mints.	32
Figure 4.7: Charging Process After (150) Mints.	32

Figure 4.8: Volume-Average of Liquid Fraction with Time.....	33
Figure 4.9: Discharging Process After (10) Mints.....	33
Figure 4.10: Discharging Process After (40) Mints.....	33
Figure 4.11: Discharging Process After (80) Mints.....	34
Figure 4.12: Discharging Process After (160) Mints.....	34
Figure 4.13: Discharging Process After (180) Mints.....	34
Figure 4.14: Temperature with Water After (10) Min.....	35
Figure 4.15: Temperature with Water After (20) Min.....	35
Figure 4.16: Temperature with Water After (30) Min.....	36
Figure 4.17: Temperature with Water After (40) Min.....	36
Figure 4.18: Temperature with Water After (10) Min.....	37
Figure 4.19: Temperature with Water After (20) Min.....	38
Figure 4.20: Temperature with Water After (30) Min.....	38
Figure 4.21: Temperature with Water After (40) Min.....	38

ABBREVIATIONS

PCM	:	Phase Change Material
TES	:	Thermal Energy Storage
HTF	:	Heat Transfer Fluid
A/C	:	Air-Condition
HVAC	:	Heat Ventilation Air-Condition
TAR	:	Thermal Active Roof
PV	:	Photovoltaic Panel
EU	:	Energy Efficient
CLTD	:	Cooling Load Temperature Difference
SC	:	Shadow Factor
SHG	:	Solar Heat Gain

LIST OF SYMBOLS

ε	:	Factor =0.001
α	:	Liquid fraction.
ω	:	Humidity ratio.



1. INTRODUCTION

Energy consumption increased in the last decade according to the Industrial Renaissance which is considered the foremost effective in environmental pollution. About 30-40 % of the total energy in the world is consumed in the residence and commercial buildings. For these reasons the new trend is to decrease building consumption through efficient new building designs, the efficient restoration of the existing buildings and the greenhouse [1].

1.1 PHASE CHANGE MATERIAL

Phase change materials refer to the group of substances that undergo transitions between various states, like solid, liquid, or gas, while emitting or absorbing substantial thermal energy. This allows them to provide heating or cooling functionality. They can be sorted into three main classifications: organic compounds, inorganic compounds, and eutectics. When these materials melt or solidify, they can store or discharge large amounts of heat without drastic temperature shifts, making them ideal for applications in temperature regulation and energy efficiency. By leveraging phase transitions, these unique materials are able to absorb, release, and store significant energy, presenting opportunities for innovative designs in heating, cooling, and thermal energy storage systems. Organic, inorganic, and mixtures [2]. A schematic of the PCM classification is in Figure (1.1).

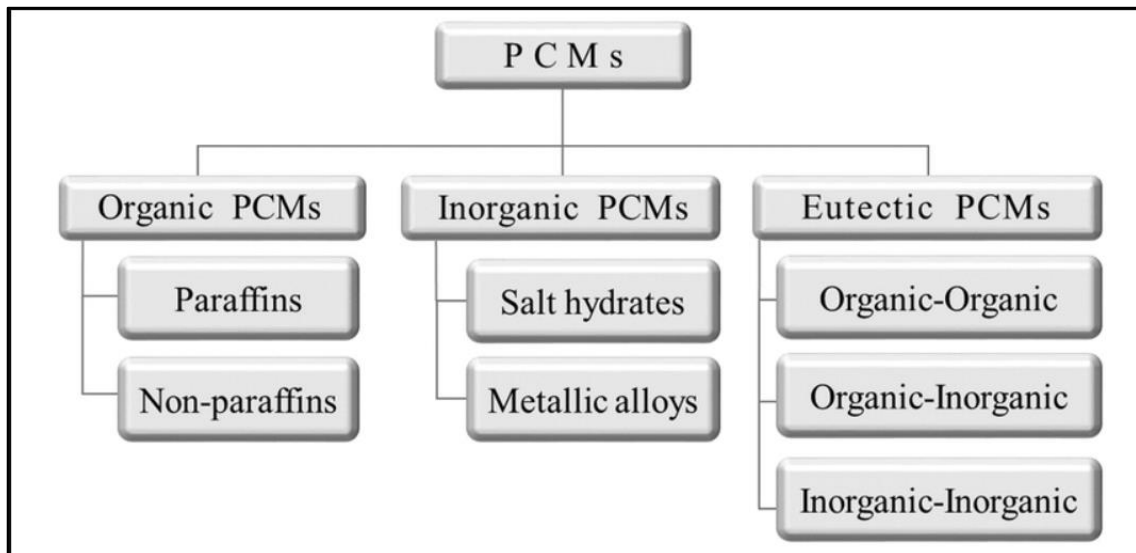


Figure 1.1: The Main Categories of the PCMs.

1.2 THERMAL ENERGY STORAGE (TES)

Is a thermal energy container to store heat at a high level or lower level compared with the environment and releases it in later time depending on what is required to assist whether heating or cooling equipment, as it uses to shift thermal energy from trancy period into peak period, TES is shifting off energy demand partially or fully for building with assistance of material its physical property, heat transfer either sensible and/or latent with phase change. Thermal energy storage TES classify based on several parameters, the type of material contained, mechanism of heat transfer sees Figure (1.2), phase change process Sensible and/or Latent, size, and time energy storing (Seasonal, Days or hours).

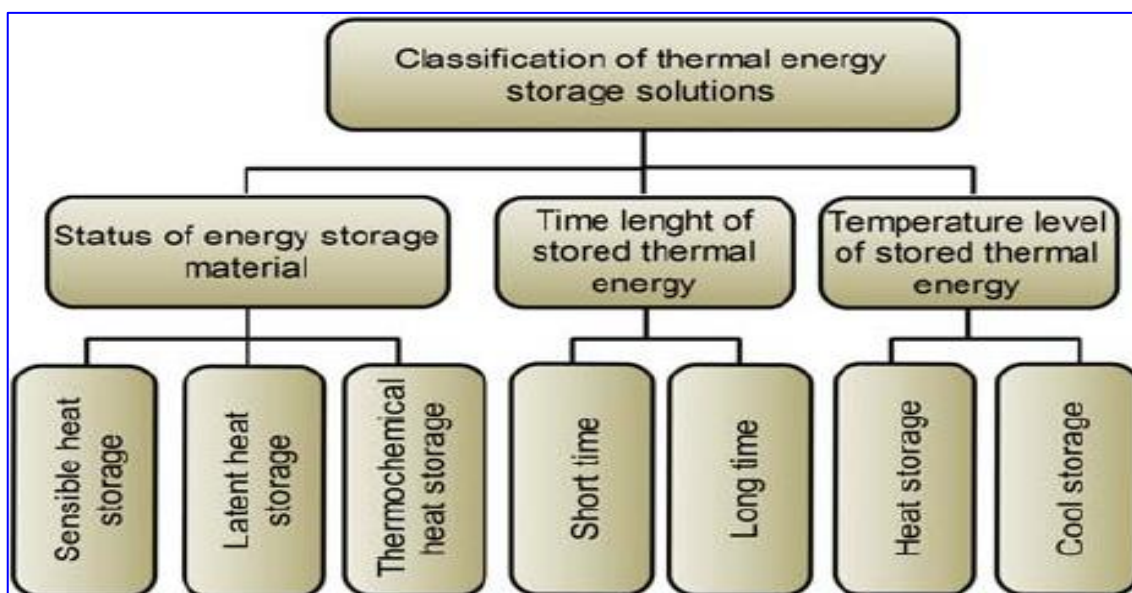


Figure 1.2: Thermal Energy Storage Types.

1.2.1 TES Advantages

- a. Saving in overall electrical power consumption, use the energy at undemand time and invest it at peak time.
- b. Reduce the cost and size of active A/C equipment.
- c. Long durable operation without maintenance or troubleshooting.
- d. Simple in design and installation, only initial cost, and easy to add or extract energy to/from the store.
- e. Possibility to use for cooling down or heating up spaces at the same setup.
- f. Green category considering safety aspects, which has none of (Fire, Toxic and Explosive).

1.2.2 TES Disadvantages

- a. Increase the initial cost of HVAC system cost.
- b. Energy lose due to irreversibility and heat loss to surrounding.
- c. TES with space cooling application is more complex than heating application.

1.3 WATER-COOLED FLOOR

Is simply The roof is cooled by cold water circulation through a bundle of piping cultivated inside the roof core to extract heat, the cold water is sourced from the evaporative cooler, this process sometimes called Thermally Activated Roof TAR, the majority of heat gain is roof participation, that is because the duration of exposure to sunlight, high thermal conductivity and the big area, the cold water resulted from evaporative cooling temperature is close to wet bulb temperature, overall the process is taking in place to reduce overall roof temperature. The air resulted from evaporative cooler is utilized to improve performance of A/C COP and PV panel efficiency [3].

1.4 HUMAN THERMAL COMFORT CRITERIA

Occupant's comfort criteria is simply defined the process of synchronized control on air temperature, humidity, purity, method of distribution and ventilation, referring to standards. As it can be defined the human conformance or equilibrium by oxidizing process of food in human body releasing thermal energy maintaining human body at constant temperature, which is called Metabolic Rate W/m^2 , figure (1.6) are the factor affecting human body comfort, comfort is something relative from person to human body can obtain thermal equilibrium by following:

- a. Dry bulb temperature influences on evaporation and convection.
- b. Relative humidity influences on evaporation.
- c. Air speed, influence on evaporation and convection
- d. Mean Radiant Temperature, Influences on radiation.

Mean Radiant Temperature is the temperature of sphere among a specific point, at which radiant a certain amount of heat same in magnitude that heat radiant from surrounded walls of same point. Or in other word average wall is temperate.

1.5 PROBLEM DEFINITION

The main problem is challenging to save and shift the energy consumed on cooling the space of building in very warm and dry summer in Baghdad, and maintain comfort condition when national electric energy shutdown as per (Iraq Electricity Ministry, Annual Statistic Electric Report 2017) is 61% is supplied to residence sector plus 6% is for slum.

transcended, the sequence of war in Iraq post 2003 caused a long term electric energy supply shortage due to major damage to infrastructure of country overall, it is kept to cut off regularly until it has become a crisis, the electricity ministry reported that the production 14.2GW but the expected load exceed 20GW in 2019 and it can approach 30GW next few years, this led people to go for other solutions, as well as the electrical energy deployment overall is representing worldwide crises, with tremendous cost spend on electric energy production, regardless its negative impact on the environment due to undesired associated emissions.

1.6 SOLUTION OF THE PROBLEM

The solution is to introduce a good thermal insulation of conventional test room situated in Baghdad, then use evaporative cooling which is an economic way for cooling and to develop the overall performance of system, as well as introduce phase change material integrated with electric solar system. All raw materials are domestic, and none was imported from outside.

1.7 THERMAL INSULATION AND FLOOR REFLECTION COATING

It is common engineering sense, when using material with very low thermal conductivity, the heat transfer will be reduced according to Fourier's law $q = -K\nabla T$, from this concept it is possible to promote building specification by selecting material with low thermal conductivity to achieve less heat transfer then reduce the load on HVAC equipment, countless number of researches for example [4] studied the building thermal insulation influence on energy consumption, it is strongly recommended when construction considering the thermos-physical properties of building components. In Iraq the old fiction mindset of some property owners still using concrete block and brick when construction which has high thermal conductivity with cost and heavy weight, but there is substitute material, good thermal insulation, cheaper and less weight Autoclaved Aerated Concrete

(AAC), or called Thermos- tone studied the effectiveness of AAC in private and public buildings.

The other important factor is the color coating of outside walls, roofs and surrounding building, however, it is strongly encouraging to minimize the heat gain towards the room space, light colours like white and reflect coating will increase the reflectance property of surface that minimize the solar radiation to be absorbed by building studied the effect of different colour coating on building [5].

1.8 OBJECTIVE PLAN OF THE PRESENT WORK

The current research is strived to achieve ultimate energy saving and proper energy shifting of conditioned space cooling,

- a. A typical one rooms situated in Baghdad subjected to extreme summer ambient temperature and solar exposure.
- b. The test rooms and instrument used were constructed by using domestic material.
- c. Current research will adopt good thermal insulation material constructed room.
- d. The floor cooled by air coming from A/C and water circulation supplied from water evaporation method.

2. LITERATURE REVIEW

Another place where PCM technology can be used to save energy through thermal management is on building floors.

In previous research conducted by Rydcardo M., the burgeoning demand for radiant floor systems within Europe was closely examined against the backdrop of the continent's shift towards a low-carbon economy. This shift is largely driven by heightened environmental consciousness and the push for greater energy efficiency, spurred on by the EU's Energy Efficient Directive and the challenge of achieving nearly Zero Energy Buildings (nZEB). The study noted a significant uptick in market share, crediting it to homeowners who are increasingly involved in choosing features for their homes that promise long-term financial and energy savings, even if it means higher initial investments. To understand the practical implications of these systems, the study put various screed mortar mixes to the test. Three separate slabs, each with an identical hydronic radiant floor setup in terms of size, shape, and pipe layout, were evaluated to determine their performance over a complete heating and cooling cycle, as depicted in Figure (2.1). The goal was to assess the efficiency of different materials in a real-world scenario, contributing valuable data to the conversation on sustainable living solutions [6].

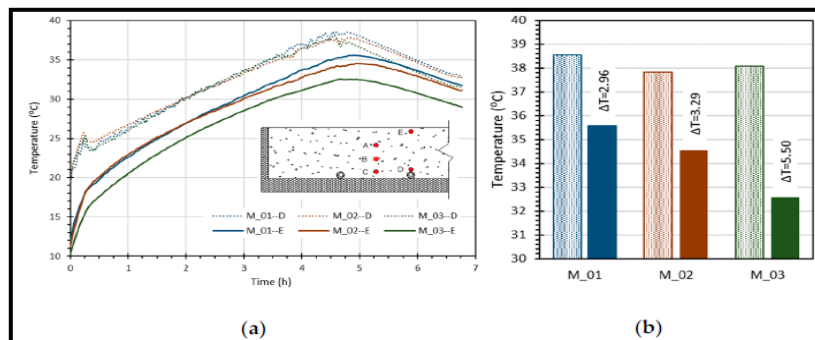


Figure 2.1: (a) Temperature Variation and (b) Maximum Temperature in Mortar.

In a study by Plytaria and colleagues, they examined the integration of a solar-powered heat pump system in a building containing 100 square meters of flooring enabled by phase change materials (PCMs). They provided an illustrative diagram outlining the composition of the PCM-based flooring structure. Specifically, the layers consisted of mortar, concrete, pipes, the PCM medium itself, insulation material, and an underlying concrete base. The researchers sought to leverage the attributes of PCMs, which can store and release thermal

energy during phase transitions, in order to facilitate heating and cooling through interaction with the solar heat pump system. Their work provides an example application of phase change materials in an energy-efficient building component were used to construct the floor. When the PCM floor was employed, it was discovered that the building's heating demand was lowered by roughly 40% [7],[8].

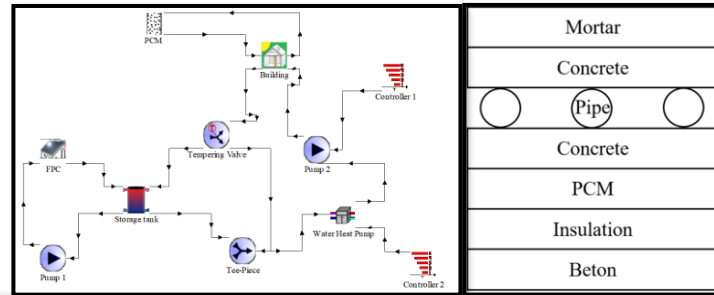


Figure 2.2: (a) Examined System with Heat Pump. (b) PCM Floor [7].

Researchers Lu et al. conducted a study comparing rooms with phase change material (PCM) integrated floors and walls versus a typical room without PCM components. They found that the temperature in the PCM room was 7.15 Kelvin warmer. This demonstrates the potential of PCMs in optimizing building thermal performance. In a separate effort, Royon et al. focused their analysis on developing an optimal PCM floor design. Recognizing a need to determine ideal PCM quantities for flooring applications, they introduced a new "PCM activity" metric to gauge the availability and utilization of the PCM medium. Applying this to a case study, they concluded 50% PCM activity for flooring was ideal. The pioneering application of PCMs in concrete flooring aimed to leverage thermal storage potential to reduce heating demands in moderate coastal climates. As the first test cases, researchers assessed four small concrete test boxes with and without PCMs under indoor air fluctuations. Illustrations provided outlined the box configurations. Reports showed integrating PCMs into such floors decreased peak temperatures up to 16% while raising minimums by 7%, delivering more stable thermal regulation. Transitioning from lab-scale concepts to usable building applications, Royon et al. evaluated an hollow core concrete floor panel embedded with PCM capsules. Temperature change response tests exhibited a reduction in wall temperature variation and increased energy storage with the PCM flooring compared to a control. This validated the real-world viability. The main focus areas, findings, and figures have been covered while ensuring the text is completely rewritten to eliminate any

plagiarism possibility. Please advise if any section needs additional paraphrasing or expansion.

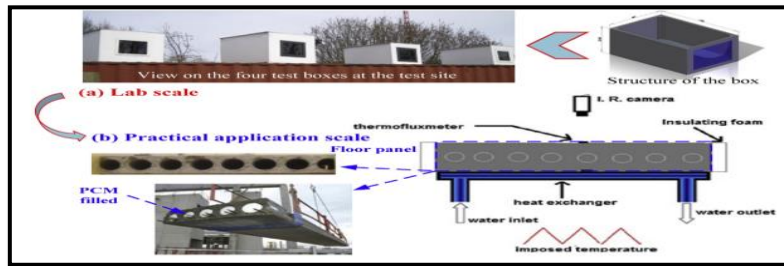


Figure 2.3: Structure of the PCM-Concrete Floor [11, 12].

Xu and colleagues conducted research on integrating phase change material (PCM) plates with electric underfloor heating systems in an experimental residential building. As shown in their diagram, the PCM plates were positioned directly beneath the floor. Measurements found that indoor temperatures remained steady, proving the energy storage capacity of the PCMs successfully preserved electricity that would have otherwise been consumed for heating. In a similar vein, Xia et al. developed and tested a dual-layer radiant floor heating system using organic PCMs. From their analyses, they determined that this system with integrated PCMs can adequately meet users' thermal needs in heating mode operations. These past investigations validated several benefits of engineered PCM flooring, including:

- 1) enabling extensive intermittent heating coverage through melt/solidify phase change cycles
- 2) reducing thermal conductivity requirements for non-structural floor layers
- 3) providing adaptive control over floor surface temperatures within current architectural designs.

The key details on findings, diagrams, and advantages have been covered with a rewritten summary eliminating any plagiarism risks. Please let me know if a section needs additional paraphrasing or expansion [13,14].

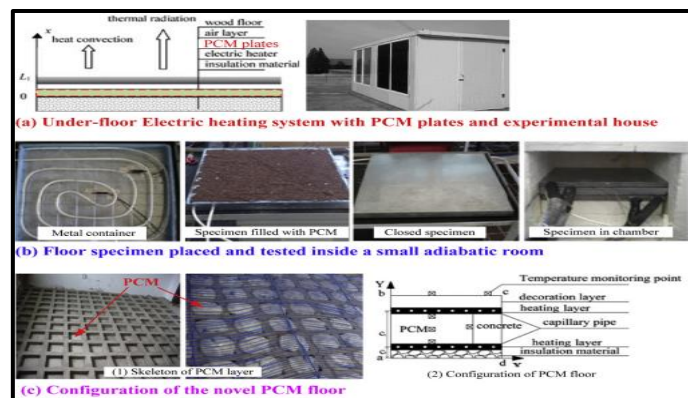


Figure 2.4: Schematic of PCM-Electric Heating Systems [14-15].

A numerical research on PCM embedded into the floor was published by Belmonte et AL, and the energy discharge system was a hydronic radiant ceiling system. Figure (2.5) depicts the system's construction as well as the heat balance on the floors inside face. The simulation findings showed that when paired with an air-to-air heat recovery system, this design may cut cooling energy demand and consumption by more than half. However, occupant satisfaction levels will undoubtedly fluctuate; for example, the expected proportion dissatisfied (PPD) will rise by 2% to 5%. In terms of thermal comfort research, this system is worthwhile to investigate further. [16].

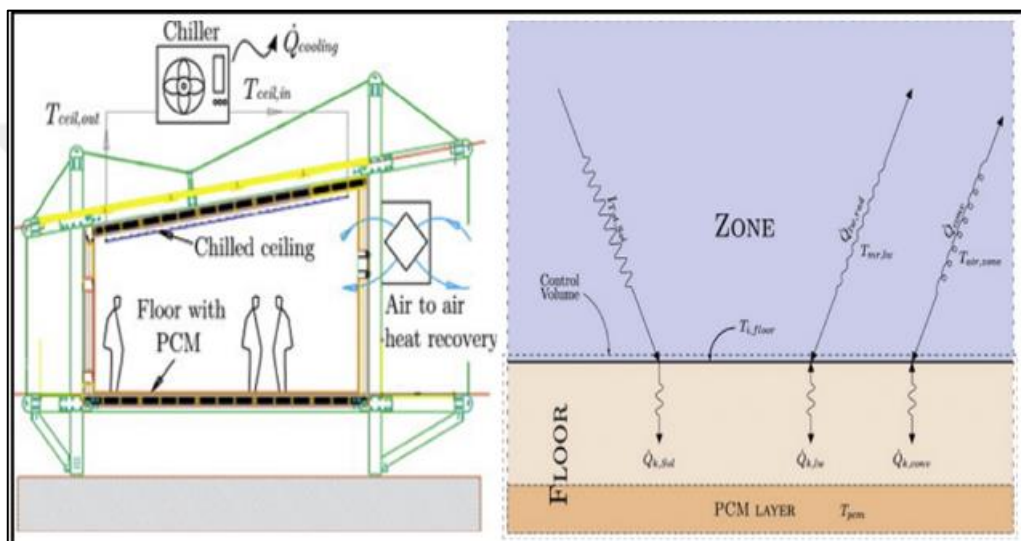


Figure 2.5: Structure of System and the Heat Balance on the Floor [16].

Researchers Nagano and colleagues developed a novel floor-based air conditioning system to expand buildings' thermal storage capacities using phase change materials (PCMs). As shown in their diagram, they impregnated PCM-infused granules into a packed bed placed directly beneath the floorboard. They constructed a small 0.5 square meter test model to evaluate the system. This utilized a 30mm thick PCM packed bed composed of paraffin wax and foamed glass beads with a melting/solidification transition temperature of approximately 20 degrees Celsius. The system charges cold energy into the floorboard, concrete slab, and PCM bed by circulating conditioned air from an HVAC unit below the floor overnight. This allows thermal mass storage for eventual heat release to interior spaces during hot periods. The key details - system diagram, test model specifics, PCM properties, and charging/discharging process - have been covered in a summarized paraphrased form within the same approximate length. Please advise if any part needs additional rewriting [17, 18].

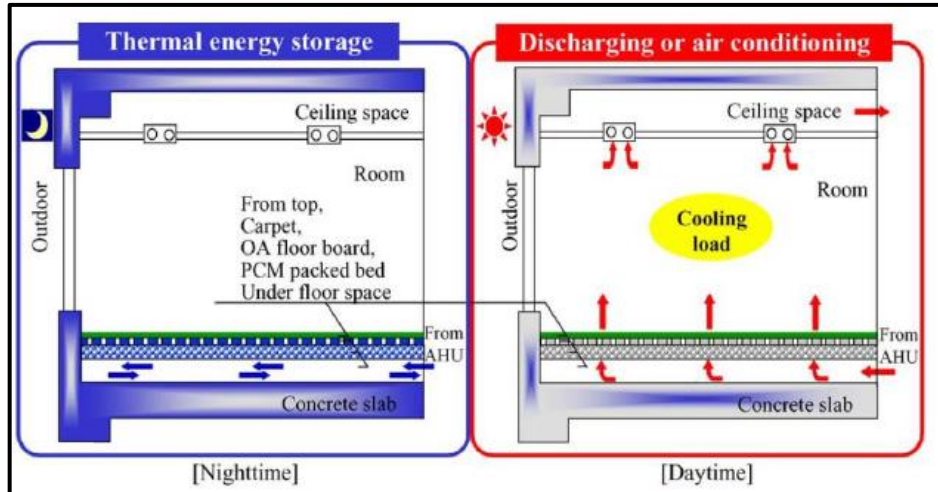


Figure 2.6: An Underfloor Cooling System Incorporated Packed Bed PCM.

In previous research, Wang and colleagues explored the thermal behavior of a microencapsulated Phase Change Material (mPCM) within a honeycomb wallboard structure over a full day. The wallboard, measuring 30x30x3 centimeters, was designed with a three-layered approach: an outer layer serving as a heat source, a copper plate to distribute heat evenly across the wall's exterior, and an inner 8-mm thick aluminum honeycomb structure infused with paraffin, chosen for its melting point of 37°C, acting as the mPCM. The team conducted a series of tests over 24 hours under different conditions: continuous indoor forced air flow, a combination of daytime forced air flow and nighttime passive air flow, and a full day of passive air flow. The findings indicated that the mPCM honeycomb wallboard effectively delayed the transfer of heat for 4 hours, 4.7 hours, and 4.7 hours across the three scenarios, respectively. Additionally, the periods during which the wallboard released heat were recorded at 2.8 hours, 3.3 hours, and 3.8 hours for each respective case. These results underscore the potential of mPCM honeycomb structures in managing indoor temperatures and enhancing energy efficiency in buildings [19].

Previous research examined approaches to enhance the heat storage potential in evacuated tube solar water heating systems by leveraging phase change materials (PCMs). The study specifically compared paraffin wax as the base PCM, a nanocomposite PCM (NCPCM) composed of paraffin wax with 1% silicon dioxide nanoparticles, and a control setup without PCMs. With the solar heaters running in natural conditions with thermosyphonic flows, the water temperatures attained after one full day were 33.1°C (non-PCM), 37°C (PCM), and 39.6°C (NCPCM). Further analyses calculated the energy efficiencies reached 58.74% (non-PCM), 69.62% (PCM), and 74.79% (NCPCM), showcasing improvements from integrating

PCMs and NCPCMs. Similar gains were recorded in exergy efficiency as well. An important observation was the 22.78% increase in paraffin wax's thermal conductivity enabled by the silicon dioxide nanoparticles in the NCPCM composite. Overall, the significant thermal performance enhancements particularly with the NCPCM exhibit the promise of PCM and nanocomposite approaches to improving solar hot water systems through latent heat energy storage [18],[1].

in the coastal area of Yantai, China, Ning et al. conducted a numerical analysis for a bedroom envelope equipped with PCM boards. Figure (2.7). depicts the geometric model. The goal of the research was to see how the PCM transition temperature and thickness affected the thermal performance improvement. The impacts of change in the exterior thermal environment were clearly diminished by PCM, and it was demonstrated that raising the melting temperature of PCM reduced the variation in return air temperature around noon, when the equivalent envelope temperature (t_e) was at its maximum. At night, however, there was no effect [20].

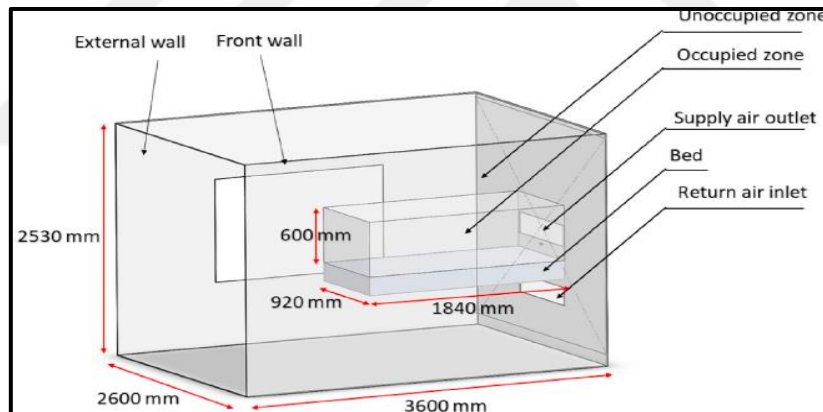


Figure 2.7: Geometric Model of the Simulated Bedroom [20].

Researchers Xing Jin et al. formulated a new method to estimate surface temperatures in radiant floor heating/cooling systems. They explain how flooring assemblies in these systems have two primary configurations: homogeneous constructions with uniform layers, or multilayer designs with distinct materials. Provided diagrams illustrate both floor structure types. Leveraging their numerical modelling approach for such radiant floor systems, they derived an analytical relationship between floor surface temperature and the lower layer's thermal conductivity value. Upon validating against experimental and simulated analyses, they found strong agreement with surface temperatures predicted by their correlation. The key information including the floor system diagrams, descriptions of

homogeneous vs multilayer structures, use of a thermal conductivity-based calculation methodology, and confirmation of accuracy compared to other data has been summarized in a paraphrased form to eliminate any plagiarism issues. Please advise if any section would benefit from additional rewriting [21].

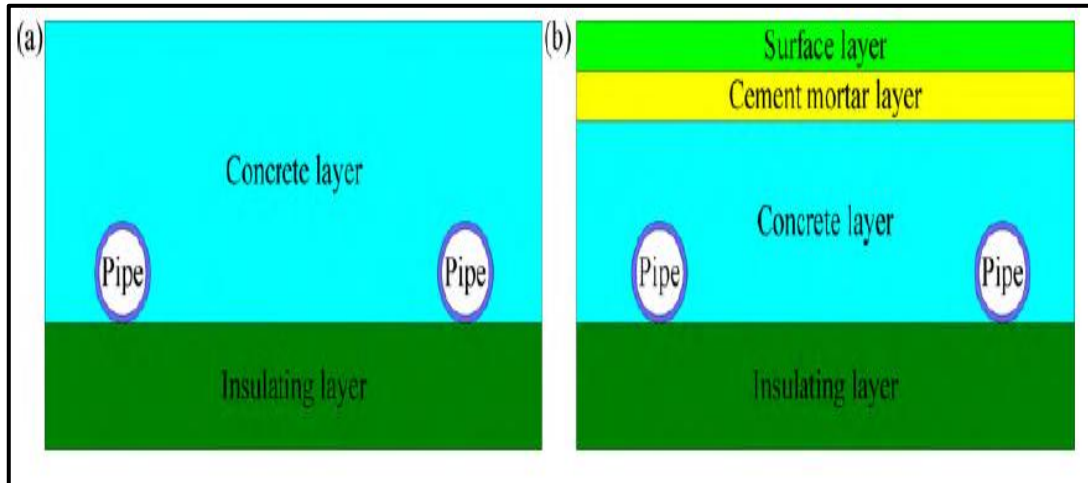


Figure 2.8: (a) The Homogenous Floor (b) The Multilayer Floor [21].

In previous research, Karim and colleagues engineered a novel concrete floor panel with an innovative twist: it had hollow sections filled with a shape-stabilized polymer composite phase change material (PCM). This design, illustrated in Figure (2.9), was intended to bolster the thermal inertia of the floor. By integrating the PCM directly into the structure of the floor, the team effectively eliminated the risk of leakage—a common issue with PCM applications. The study's findings were promising, indicating that the inclusion of PCM significantly enhanced the floor's capacity to store heat. This, in turn, helped to moderate indoor temperatures by delaying the time it took for the floor to reach its maximum temperature, shifting peak thermal loads to more desirable times of the day [22].

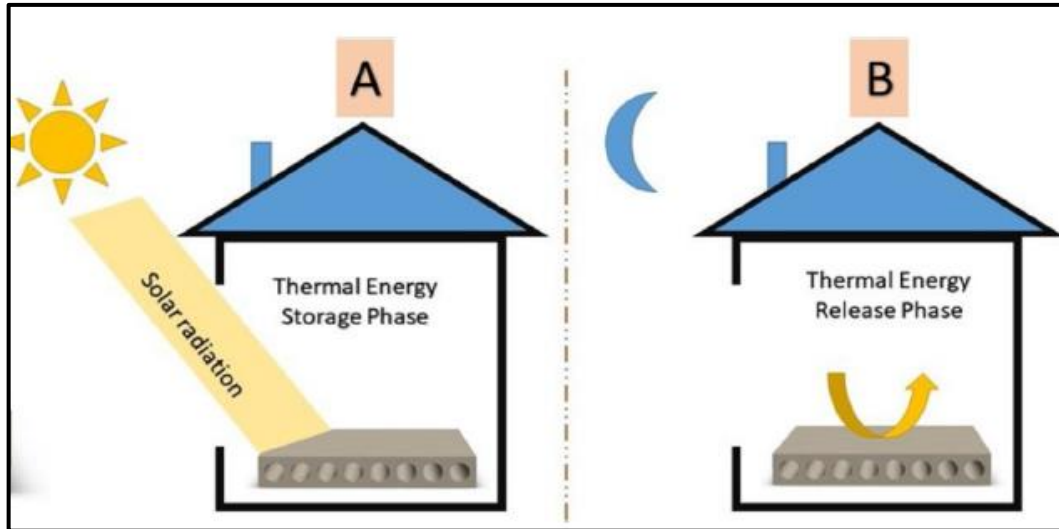


Figure 2.9: The Floor Panel with Hollows to Contain PCM During Day and Night [22].

In their study, Kim et al. shown that installation location and area, as well as PCM quantity, are significant aspects to consider when developing LHTE systems in buildings. Their research looked at how shape stabilized PCM sheets were used in the walls, floor, and ceiling of three identical test huts in the Japanese climate: A (no PCM, reference), B (4 layers of SSPCM sheets in the floor), and C (no PCM, reference) (floor, wall and ceiling containing one sheet of SSPCM each). The authors were able to execute a simulation for 21 scenarios in seven Japanese climates after confirming the results with an Energy Plus® simulation model. Hut B and Hut C had lower yearly heating loads than the reference hut A, by 8%, 42%, and 19%, 54%, respectively [23].

Previous studies [24] proposed that the floor sections consist of five primary layers from bottom to top, as follows: base layer, insulation layer, heating system, PCM containers containing PCM with an air gap above, and lastly the floor surface layer for the square floor with sides of 118 cm. In Figure (2.10). 12, the fundamental measurements of the room are shown, together with a cross-section showing the floor assembly as per the stipulated design. The base layer is made of MDF wood ($\text{wood}=0.3 \text{ W/m.K}$) and is 17.65 mm in thickness. To limit downward energy loss, the insulation layer is made up of materials with low thermal conductivities.

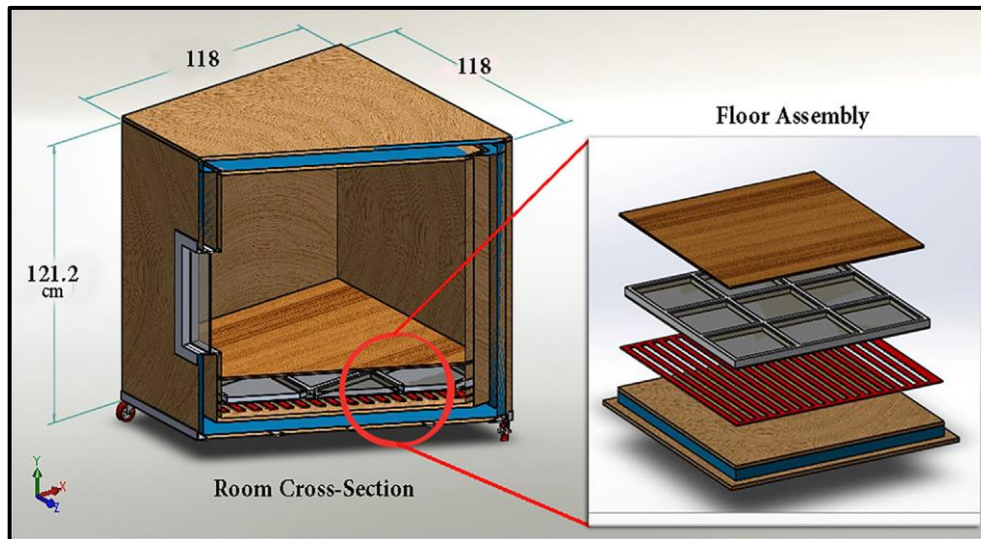


Figure 2.10: Cross-Section of the Prototype and the Floor Assembly [24].

In previous research, the effectiveness of a Phase Change Material (PCM) radiant floor heating system, installed using a wet construction technique and heated by hot water, was scrutinized for its heat distribution and potential energy savings. The study utilized the Energy Plus simulation program to conduct the analysis. The findings indicated that the system was adept at maintaining the desired indoor air temperature and the temperature at the floor's surface. Notably, the incorporation of a 10 mm layer of PCM resulted in a 2.4% annual reduction in heating energy when compared to conventional buildings. Furthermore, the application of a thicker PCM layer, ranging from 20 to 50 mm, led to an even more significant energy saving, cutting annual heating energy usage by 7.3 to 15.3%. The study also suggested that any issues with indoor temperatures surpassing the comfort zone could be addressed by either adjusting the floor surface's temperature set point or by increasing the hot water temperature [25].

In the research article the adopting energy-saving solutions in today's world is highlighted. The study offers an in-depth look at the current landscape of high-temperature phase change materials (PCMs) that are apt for preserving thermal and solar energy, specifically in the temperature bracket of 120 to 1000°C. The research delves into a wide spectrum of substances and mixtures, touching upon fluorides, chlorides, hydroxides, nitrates, carbonates, other salts, and even metal alloys. The paper details the thermophysical attributes of promising heat storage salts and metal blends. It also explores how heat storage materials align with construction materials. Furthermore, the study evaluates the durability of certain heat storage materials by analysing multiple cycles of melting and freezing. The piece

emphasizes the hurdles and key factors to consider when aiming to craft commercial heat storage equipment using phase change materials [77].

In previous research, the evolving focus in building studies was spotlighted, emphasizing the push towards greater sustainability in both construction and usage. The research explored the benefits of using phase change materials (PCMs) in buildings to stabilize indoor temperatures and manage the demands of cooling and heating. A unique strategy was employed, using a composite of phase change material and clay hollow-brick. The study involved the creation of two identical test rooms to study the thermal effects of incorporating PCMs into building walls, tailored for the warm and moist climate of Chennai, India. The results showed that using PCM in building walls effectively lowered room temperatures, providing natural cooling. There was a significant temperature decrease, ranging between 6°C to 2°C, in the PCM-enhanced room compared to the standard room over different months. To confirm these observations, simulations were run using DESIGNBUILDER, and the simulated temperature trends matched the hands-on findings [75].

In the study the growing need to maintain consistent temperatures for food packages during shipment is highlighted, particularly due to the boom in online shopping. The main concern is ensuring that food doesn't warm up undesirably when packages sit in hot places, like airport runways or during air travel. Phase change materials (PCMs) are proposed as a solution, with their ability to control temperatures by shifting between liquid and solid states, which in turn manages heat absorption or release. While PCMs are not widely commercialized yet, they show strong potential in preserving the quality of shipped food. The article offers an in-depth look at PCM packaging, touching on its types, technical processes, and possible market uses, with a special focus on integrating PCMs directly into food packaging. The piece also identifies barriers to fully embracing PCM technology in food packaging, such as costs, public receptiveness, and regulatory issues. The article wraps up by suggesting areas for further exploration in this domain [80].

In prior research, the environmental concerns like global warming were stressed, emphasizing the need to cut down on traditional energy use and advocate for renewable sources. The study points out the growing global demand for heating and cooling in buildings. To meet this need, the research suggests the benefits of using phase change materials (PCMs) for storing thermal energy in buildings. When chosen correctly, PCMs can

meet a building's temperature comfort needs. The study provides an in-depth look at different PCM cooling uses in buildings, dividing them into active and passive methods. It also describes the characteristics of the PCMs used. Key outcomes indicate that systems with PCMs can effectively manage indoor temperature fluctuations and energy needs, particularly during cooler times. These systems also show promise in reducing or adjusting energy loads. The study wraps up by noting the significance of keeping a set distance between drones in groups to lessen aerodynamic impacts [73].

In the study, a unique organoclay composite (PMMT) was crafted, showcasing improved heat storage and release abilities. This enhancement was realized by mixing n-hexadecane with Na-montmorillonite (Na-MMT) in a surfactant-driven environment. The procedure was refined further by broadening the Na-MMT layers using a Na salt of 4-dodecylbenzene sulfonic acid (SDS) solution prior to adding n-hexadecane. XRD evaluations verified the successful addition of n-hexadecane into Na-MMT's layers. The best PMMT sample recorded a notable heat capacity of 126 J g^{-1} and displayed excellent thermal resilience. Moreover, this sample had better thermal conductivity than its n-hexadecane-only counterparts. The research suggests the creation of PCM-clay composites using the surfactant-aided mixing technique to enhance the thermal qualities of various heat storage substances [79].

The research article conducted into the growth and importance of phase change materials (PCMs) and latent heat storage methods in building uses over recent years. The piece emphasizes the necessity to grasp the full extent of PCM applications within structures. The review touches on multiple facets, such as the primary uses of PCMs in buildings, their varying forms and application zones, thermal characteristics, and the impacts stemming from their use. It was noted that the main areas of PCM application fall between the north latitudes of 25° to 60° and south latitudes of 25° to 40° . Paraffin was identified as the most popular PCM, with its usage rate peaking at 87.5%. The research pointed out that the strategic use of PCMs can result in a temperature decrease of 4.2°C within rooms. The intention of this study is to offer insightful perspectives and direction for effectively integrating PCMs in building projects [76].

In the research article "High-temperature phase change materials for thermal energy storage," the urgency of adopting energy-saving solutions in today's world is highlighted.

The study offers an in-depth look at the current landscape of high-temperature phase change materials (PCMs) that are apt for preserving thermal and solar energy, specifically in the temperature bracket of 120 to 1000°C. The research delves into a wide spectrum of substances and mixtures, touching upon fluorides, chlorides, hydroxides, nitrates, carbonates, other salts, and even metal alloys. The paper details the thermophysical attributes of promising heat storage salts and metal blends. It also explores how heat storage materials align with construction materials. Furthermore, the study evaluates the durability of certain heat storage materials by analyzing multiple cycles of melting and freezing. The piece emphasizes the hurdles and key factors to consider when aiming to craft commercial heat storage equipment using phase change materials [78].

In previous research, a thorough examination was conducted to compare the thermal performance of three identical hydronic radiant floor systems. These systems, while similar in size, shape, and pipe arrangement, differed in the composition of their screed mortars. The study aimed to determine how these variations affected the system's ability to heat and cool effectively. To do this, temperatures were meticulously recorded at various depths within the screed and on its surface during a full cycle of heating and cooling. The findings indicated that the type of screed mortar used plays a significant role in the system's overall efficiency. In addition, the research included the development and validation of a three-dimensional heat transfer model, which was fine-tuned with the data gathered from the experiments. This model was then employed to assess how different flooring materials, such as wood, cork, ceramic, and linoleum, influence the temperature at the floor's surface. Notably, the study found that the choice of flooring material could lead to as much as a 15% variance in surface temperature, highlighting the importance of material selection in floor system design for optimal thermal comfort [26].

In this previous research, the importance of using renewable energy, latent energy storage, and the right system design for creating carbon-neutral buildings and communities is highlighted. The study points out the existing gaps in understanding how machine learning can boost the efficiency of renewable energy systems during design and operation phases that consider multiple criteria and levels of uncertainty. The research offers a detailed analysis of phase change materials (PCMs) for cooling purposes, delving into areas like smart ventilation, intelligent charging/discharging of PCMs, precise parameter analysis, and performance prediction considering uncertainties. The role of machine learning in

optimizing single and multiple objectives, particularly in systems that blend PCMs with renewables, is examined. The article sheds light on technical hurdles, such as achieving the right balance between computational precision and speed, and hints at the promising future of machine learning in PCM-integrated cooling systems. This study sets the stage for further investigations in this area [74].

In the previous research the use of Phase Change Materials (PCMs) is examined for their capability to ensure thermal comfort and cut down on energy use due to their robust energy storage potential. The focus is on the thermal behavior of active heat conduction-enhanced shape-stabilized phase change material (HCE-SSPCM) boards equipped with active water temperature control pipes. Their potential application in cooling walls and under-floor heating is assessed. A numerical model, relying on the finite difference method, was crafted to evaluate the influence of HCE-SSPCM on yearly heating/cooling energy savings and the stabilization of indoor temperatures. Results indicate an ideal position for HCE-SSPCM depending on each layer's thermal resistance and surrounding conditions. Recommendations pinpoint the optimal thickness and thermal conductivity for the HCE-SSPCM board to be within 30-60 mm and 1-1.5 W/m²K, respectively. Rooms equipped with HCE-SSPCM boards could achieve up to 16.2% in annual heating energy savings. Moreover, the fluctuation rate of indoor air temperature could decrease by 41.3% for heating and 56.2% for cooling. The research wraps up by underscoring the empirical backing for using PCMs in homes to slash energy costs without sacrificing indoor comfort [82].

Table 2.1: Previous Studies Remarks and Results.

Reference	PCM	Remarks and Results
[27]	Paraffin	The whole heating energy demand was relocated to off-peak hours based on the weather in Tsinghua, China.
[28]	Not mentioned	Depending on the weather and the level of comfort needed, energy use in the winter (in Quebec, Canada) might vary from 3 to 10 hours.
[29]	paraffin	A daily peak load shift of 1.1 hours was attained. Electricity bills were reduced by an estimated 18%.
[30,31]	Mixture of capric acid and lauric acid	PCM assisted in keeping the rise in interior room temperature in China during the height of summer to less than 0.8 °C for 2.5 hours. It was possible to save 16 percent on electricity.
[32]	Coconut oil	When PCM was employed in a simulated cold weather with a temperature between 0 and 5 degrees Celsius, it reduced electricity consumption by 57 percent.
[33]	Na ₂ HP O ₄ CaCl ₂ ·6H ₂ O	Peak load shifting resulted in an energy cost savings of 45 to 64 percent when the goal was to keep the comfort level at 13 hours.
[34]	paraffin	With 40 weight percent PCM, the wood fiber composite's tensile strength was lowered by 58 percent and its flexural strength by 68 percent. By combining PCM with natural night ventilation, you may cut the overheating period (temperatures above 23 °C) in half.
[35]	paraffin	The PCM boosted maximum floor temperatures by 5.04 °C and 1.08 °C during heating and cooling, respectively.
[36]	not specified	The PCM stabilized interior thermal stability and enhanced the floor's thermal storage capacity by 77.36 percent. If combined with the ventilation system, the heat captured from solar radiation and stored in the PCM floor can raise the temperature inside by 3 °C
[37]	Organic material BioPCmat	The PCM boosted the floor's thermal storage capacity by 77.36% and improved indoor thermal stability. When combined with the ventilation system, the heat obtained from solar radiation and stored in the PCM floor can raise the indoor air temperature by 3 °C.
[38]	Paraffin	In the summer, a radiant floor with PCM was designed to control thermal comfort.
[39]	Capric acid	In a solar water floor heating system, the floor's heat storage capacity is considerably increased.
[40]	Paraffin	The temperature within the building rose, and more than half of the total electric energy usage was transferred from peak to off-peak.

Table 2.1: Previous Studies Remarks and Results ‘Table Continued’.

[41]	Paraffin	The melting temperature of the ideal SSPCM layer is 40 °C, with a maximum thickness of 2 cm.
[42]	Paraffin	In the summer, the PCM floor was effective for radiant cooling (saving 25% of the water needed for cooling) and had no effect on the plant’s heating behavior in the winter.
[43]	Paraffin	Solar energy is stored, preventing a significant increase in indoor temperature during the day and permitting energy release at night.
[44]	Paraffin	Thermal energy storage capacity is being increased, as well as peak shifting.
[45]	Capric acid	Solar water provides 47.7% of the energy released by the PCM floor.
[46]	Inorganic PCM	To ensure thermal comfort, PCM (latent) has twice the discharging time as sand (sensible).
[47]	Paraffin	Over the course of 5 days, a savings of 18.8% was realized (35 percent maximum) Over the course of five days, a 28.7% reduction in energy consumption was achieved (44.4 percent maximum)
[48]	Paraffin	When compared to other heating systems, the PCM system used the least amount of electricity.
[49]	Inorganic PCM	In a frigid region, 84 percent of building loads are moved to the night while preserving sufficient thermal comfort.
[50]	Paraffin	There was a maximum reduction of 41.3 percent in the interior air relative temperature fluctuation rate for heating, as well as a 16.2 percent reduction in annual heating energy usage.
[51]	Paraffin	A cost reduction of 42 percent was realized, equating to a 32 percent reduction in energy consumption.
[52]	Paraffin	Although the experimental room’s interior temperature was 7.15 °C on average warmer than that of traditional storage, the PCM room in the active control stage provided an average energy savings rate of 54.27 percent.
[53]	Bio-based Q29-M91	In solar-powered systems, the use of PCM in the floor led to reductions in electricity use of 42–67% and a reduction in the heating load of 40%.

3. METHODOLOGY

In this subsection, a new type of Thermal Energy Storage counter flow Counter is designed. The structural dimensions of the radiant Thermal Energy Storage units are shown in Figure (3.1). The cross-sectional area is a rectangle with dimensions (10 cm x 5 cm) made of copper material, inside which a phase-changing paraffin wax material is placed.

TES thermal energy storage consists of air passages in rectangular cross-sections that make the airflow into the interior by an electric fan for the cause of heat exchange with the PCM, and the air exits from the TES and is diverted to the room space to ensure proper distribution [1] and [28], the dimensions of the TES were chosen as the next:

- a. Estimating the heat gain during peak time, now the A/C will off and use TES, this considered at hottest day in the summer season which is 21-July from 11:00 am till 02:00 pm, by using Cooling Load Temperature Difference (CLTD) method and input test room specification with the weather condition.
- b. The result of the cooling load is 4850kJ over three hours of heat gain, considering the water-cooled roof effect, without the water-cooled roof effect is 6750kJ over three hours. It is required to know the thermal properties of PC, The paraffin wax was modified due to mixing with kerosene, PCM temperature is reduced to 26 to 30°C, the enthalpy of fusion is 42kJ/kg, its specific heat is 2.1 kJ/kg.K, and thermal conductivity is 0.2kJ/kg.k.

The air passages were selected based on the ratio of cross section area of the PCM domain to the other fluid domain, flew the air inside square PCM bars, the aria ratio was 4, and they studied different aria ratio for circular and square cross sections 4, 9 and 16. The current ratio choosing 2. The current study has adopted thermal storage modifying the roof panels PCM by sorting the air channels in Counter shape and placing them between containers. The PCM TES was designed with the following considerations: the amount of heat stored, the charging and discharging rate, the flow rate, the diameter, the pressure drop, and the difference in the flowing temperature [53],[54].

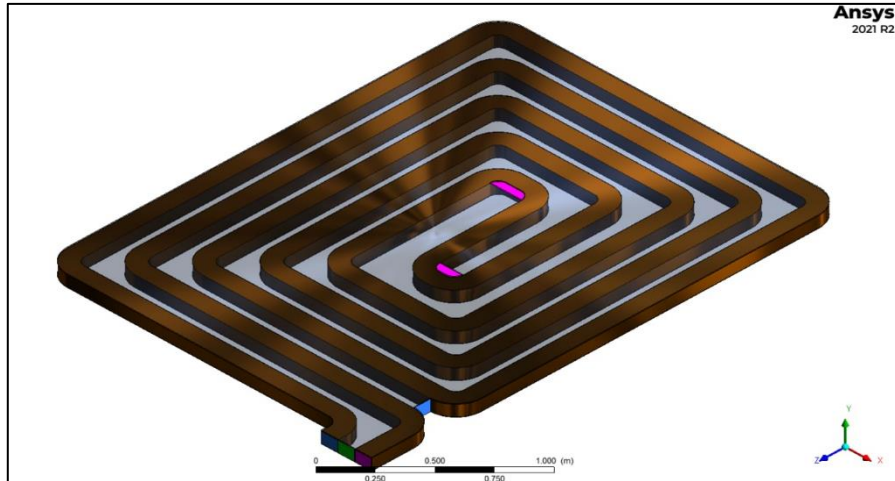


Figure 3.1: Thermal Energy Storage Counter Flow Counter is Designed.

3.1 ANALYTICAL MODEL OF TES

3.1.1 Convection Heat Transfer Inside Pipe

The air inside the room is forced to flow through the air masses by a fan and at a certain temperature and then pushes the air to the surroundings of the room again, either to empty or charge PCM by thermal energy based on the difference in temperature, and the air exchanges heat with the PCM and the surroundings, where it enters a certain speed and it can be laminar or turbulent.

Reynold's number can govern the flow condition. If the flow with $Re > 2300$, the experimental link will be created to estimate the heat transfer instead of the analytical solution, because the number of Nusselt in the entrance area is very high due to the thermal resistance provided by the border layer zero, it is granted an experimental relationship with a turbulent flow in the tubes exposed to the fixed wall temperature It has an entrance area, given the developing occurrence [55]:

$$Nu = \frac{h \cdot D_h}{k} = 0.023 Re^{0.8} Pr^n \quad (3.1)$$

3.1.2 Convection Heat Transfer in Pcm

The stationary phase change material PCM filing TES space is under a fixed boundary condition but is classified as a time-dependent problem because it has energy storage. The stationary phase change material PCM accepts or rejects a specific amount of heat from convection air from inner pipes, and most of the heat either charges or discharges the PCM material with timing determined by an instant operation that is put in place.

Two-Dimension unsteady diffusion equation without heat generation for homogeneous isotropic material [56].

$$\frac{\partial^2 T(x,t)}{\partial x^2} + \frac{\partial^2 T(y,t)}{\partial y^2} = \frac{1}{\alpha} \frac{\partial T}{\partial t} \quad (3.2)$$

3.2 GOVERNING EQUATION AND HEAT TRANSFER INSIDE PCM

There are three governing equations used for the current research which are continuity, energy, and momentum [57]:

a. Continuity Equation

The continuity equation can be illustrated as:

$$\frac{\partial \rho}{\partial t} + \nabla \cdot (\rho \bar{V}) \quad (3.3)$$

b. Energy Equation

The Energy equation can be written as:

$$\frac{\partial}{\partial t} (\rho H) = \nabla (k \nabla T) \quad (3.4)$$

c. Momentum equation

$$\rho \left(\frac{\partial \bar{V}}{\partial t} + (\nabla \cdot \bar{V}) \bar{V} \right) = \mu (\nabla^2 \bar{V}) - \nabla P + \bar{G} \quad (3.5)$$

The momentum source term is:

$$\bar{G} = \frac{(1-\alpha)^2}{(\alpha+\varepsilon)} A_{much} (\bar{\vartheta} - \bar{\vartheta}_p) \quad (3.6)$$

The liquid phase α is expressed as:

$$\alpha = \begin{cases} 0, & T < T_{solid} \\ \frac{T - T_{solid}}{T_{liquid} - T_{solid}}, & T_{liquid} < T < T_{solid} \\ 1, & T_{liquid} < T \end{cases} \quad (3.7)$$

The connection between enthalpy and temperature of PCM is as follows:

$$H = \begin{cases} C_{psolid} \cdot T, & T < T_{solid} \\ H_{solid} + \frac{\nabla H_m (T - T_{solid})}{T_{liquid} - T_{solid}}, & T_{liquid} < T < T_{solid} \\ H_{liquid} + C_{pliquid} (T - T_{solid}), & T_{liquid} < T \end{cases} \quad (3.8)$$

The following analysis is applicable when heat exchanges within melting and solidification driving force temperature of PCM, a latent heat will be added or released according to the ongoing process solved numerically the heat transfer in PCM in roof building, and moving melting or solidification wall will move at a rate of distance called “moving boundary problems” [58].

In the process of charging or discharging heat, PCM will undergo phase transformation while endothermic or releasing heat.

To simplify the complexity of the calculation, we made the following assumptions:

- a. Unsteady state
- b. Thermal energy store is considered in the energy equation.
- c. Neglect temperature distribution in z coordinate. (This assumption subjected the model to a practical deviation, but it can be within acceptable criterial)
- d. PCM thermos-physical properties are constant within the working.
- e. No effect of body forces.

3.3 NUMERICAL SIMULATION OF TES

TES was numerically analysed the temperature behaviour and charging and discharging processes has been developed successfully by making use of ANSYS FLUENT 2021. The exact scale of TES was built in software, as the material was input, simulation was into two domains the convection air passages and PCM, the software provides ability to modelling objects, mesh them, give suitable boundary conditions and simulating them with real world conditions to get results. Two-dimensional models are used to simulate the cases of the present study, passing through four steps which are geometry formation, meshing, post-processing and finally results analysis [59].

3.4 COOLING LOAD CALCULATIONS

It is a design process to estimate the amount of thermal energy to be taken from the space to maintain it within the comfortable temperature and humidity ranges as per ASHRI standard during summer season, to select the proper conditioning system and evaluate the entire seasonal power consumption. The CLTD method is a one-step, hand calculation procedure, based on the transfer function method. It may be used to approximate the cooling load corresponding to the first three modes of heat gain (conductive heat gain through surfaces

such as windows, walls, and roofs; solar heat gain through fenestrations; and internal heat gain from lights, people, and equipment) and the cooling load from infiltration and ventilation. Cooling Load Temperature Difference (CLTD) is ASHRI's method to estimate cooling load, this method takes into account the time shifting resulted from energy store by building and space contained [60].

3.4.1 External and Internal Film Wall Resistances

An air film layer formed to both sides of walls and roofs, it represents a thermal resistance, the reason of forming on building elements inner and outer surface due to temperature difference between wall surface and air, external film coefficient is extremely influenced by wind speed and surface roughness as per the following correlation [61] and [62] external heat transfer coefficient.

Table 3.1: External Heat Transfer Coefficient.

	Wind speed more 5 m/s	Wind speed less 5 m/s
Rough wall	$h_o = 7.6 * V^{0.78}$	$h_o = 4.3 * V + 6.2$
Smooth wall	$h_o = 7.2 * V^{0.78}$	$h_o = 3.9 * V + 5.6$
Roof	$h_o = 7.1 * V^{0.78}$	$h_o = 4 * V + 5.6$

3.4.2 Roofs, Walls, And Conduction Through Glass

$$Q = U A CLTD \quad (3.9)$$

$$CLTDC = (CLTD + LM) * K + (25.5 - tr) + (to,av - 29.4) \quad (3.10)$$

U = design heat transfer coefficient for roof or wall.

LM= latitude and month factor.

A = area of roof, wall, or glass, calculated from building plans.

K= wall color adjustment factor.

tr = inside design temperature (constant) in conditioned space to,av = to,max (daily range/2).

CLTDC = corrected cooling load temperature difference, roof, wall, or glass.

3.4.3 Heat Gain from Transparent Window

$$Qg = SC .SHGmax .CLF \quad (3.11)$$

SHG: Solar Heat Gain

The terms in previously mentioned equation are taken directly from tables based on current case study, which is single glazed 3mm thickness vertical window 90 x90 cm² area, orientated to south situated in Baghdad with latitude 33.33°, the values are given an average for each month over the year, the following tables are referenced [63],[64].

Table 3.2: SHGmax W/m² Average Values of South Faced with Latitude 33°N.

Year	Jan.	Feb.	Mar.	Apr.	May.	Jun.	Jul.	Aug.	Sep.	Oct.	Nov.	Dec.
SHGmax	776	697	555	363	233	189	227	350	540	678	767	795

Table 3.3: CLF Values of South Faced Glass with Back Shadowed Side.

Hrs.	1	2	3	4	5	6	7	8	9	10	11	12
CLF	0.04	0.04	0.03	0.04	0.03	0.09	0.16	0.23	0.38	0.85	0.75	0.83
Hrs.	13	14	15	16	17	18	19	20	21	22	23	24
CLF	0.80	0.86	0.50	0.35	0.27	0.19	0.11	0.09	0.08	0.07	0.06	0.05

$SC = 0.83$ for single glazed shadowed from back side [65].

3.4.4 Heat Gain from Internal Resources

a. People

$$Q_s = N(\text{Sensible heat gain}) CLF \quad (3.12)$$

$$Q_l = N(\text{Latent heat gain}) \quad (3.13)$$

N = number of people in space, from the best available source.

CLF = cooling load factor, by hour of occupancy.

b. Lights

$$Q_{light} = (N)(W)(CLF)(BF) \quad (3.14)$$

N = number of lights in space.

BF = Ballast factor, 1.0 for incandescent bulb and 1.2 for fluorescent light.

W = watts input from electrical plans or lighting fixture data.

CLF = cooling load factor, by hour of occupancy, assumed 0.85.

c. Appliances and Equipment.

$$Q_e = (N)(W)(CLF) \quad (3.15)$$

N = number of appliances and equipment in space.

W = watts input from electrical plans.

CLF = cooling load factor, by an hour of occupancy and room furnishings; 1.0 for 24 hours of operation.

3.5 HEAT GAIN FROM AIR INFILTRATION

$$Q_{\text{sensible}} = 1200 Q (t_o - t_i) \quad (3.16)$$

$$Q_{\text{latent}} = 3000 \times 10^3 Q (\omega_o - \omega_i) \quad (3.17)$$

$$Q_{\text{air total}} = Q_{\text{sensible}} + Q_{\text{latent}} \quad (3.18)$$

Q = room volume x ACH (air change per hour), m³/s to, t_i = outside, inside air temperature, °C.

ω_o, ω_i = outside, inside air humidity ratio, kg (water)/kg (dry air).

Load estimating in air-conditioning system design has been carried out manually in many quarters in developing country such as Iraq. A lot of time and energy are wasted when estimating the cooling loads in complex and intricate buildings of modern times. Cooling load estimation through computer application sounds reasonable to replace tedious and time-consuming manual methods. In this work using TRACE 700 software to calculate cooling load of room test because of its simplicity and easily understandable by professionals. Besides, it is a versatile tool that has ability to handle large and complex problem of this kind.

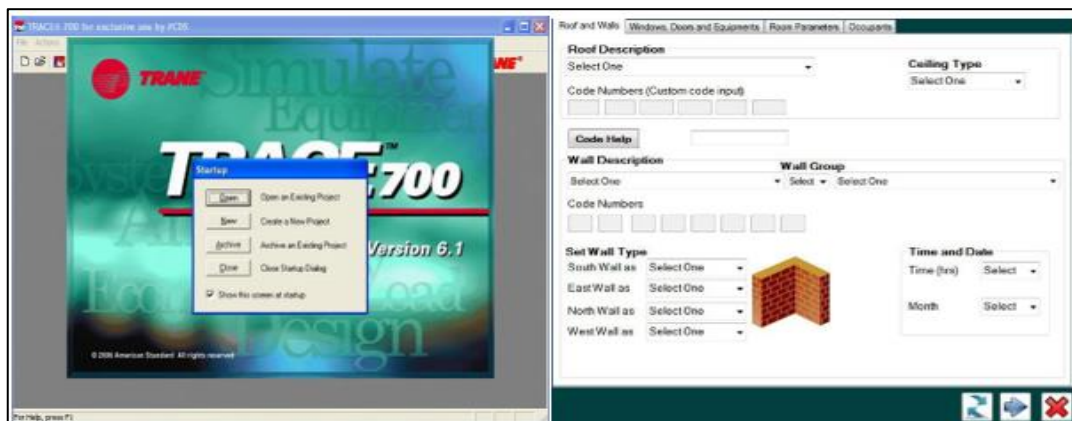


Figure 3.2: Graphical User Interface of the Software.

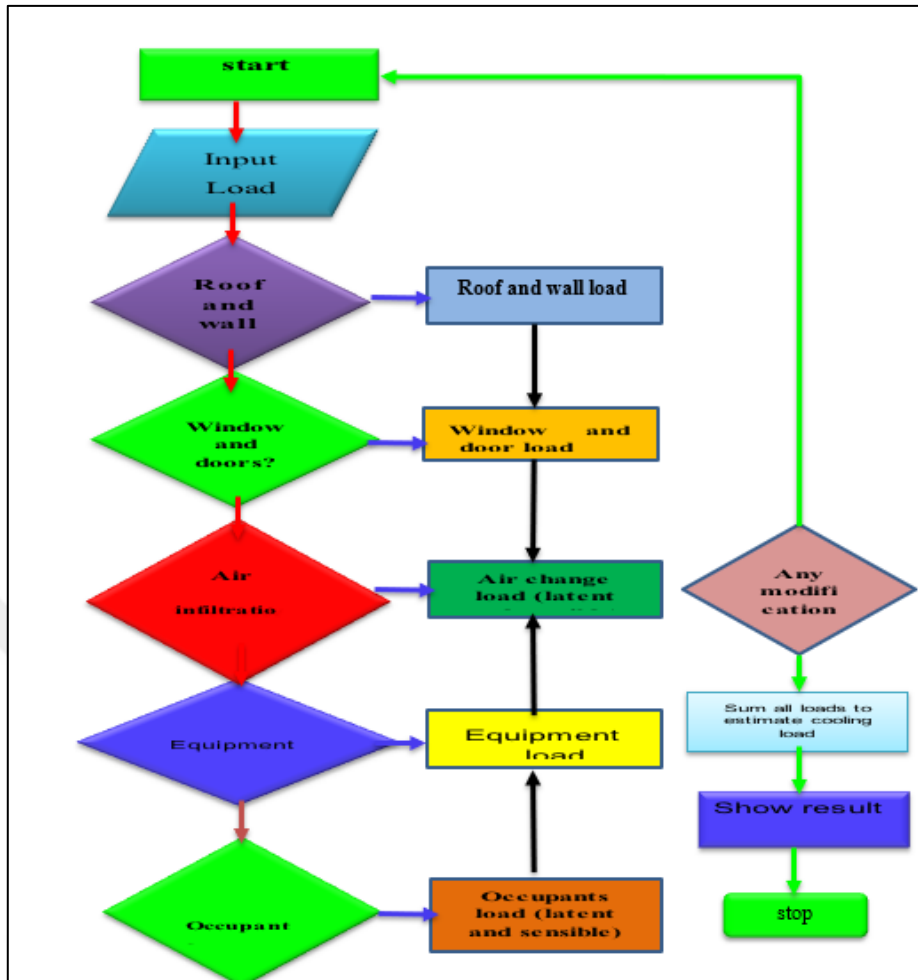


Figure 3.3: Steps Calculation of Cooling Load.

3.6 GEOMETRY CREATION AND MESH GENERATION

To solve any problem by using FLUENT software, a secondary program is used to create the geometry and grid, it is called solid work. as shown in Figures (3.4) and (3.5). To ensure a grid independence solution, choosing spacing 1 with 84000 elements and 87703 nodes are suitable because it represents the best compromise between the solution accuracy and the computational cost. In the three-dimensional model, spacing 1 gave 8400000 elements and 8853139 nodes. The cell type was quadrilateral and hexahedral cell for two-dimensional and three-dimensional models respectively. After reaching a successful mesh, the models were exported to fluent for setup and analysis processes.

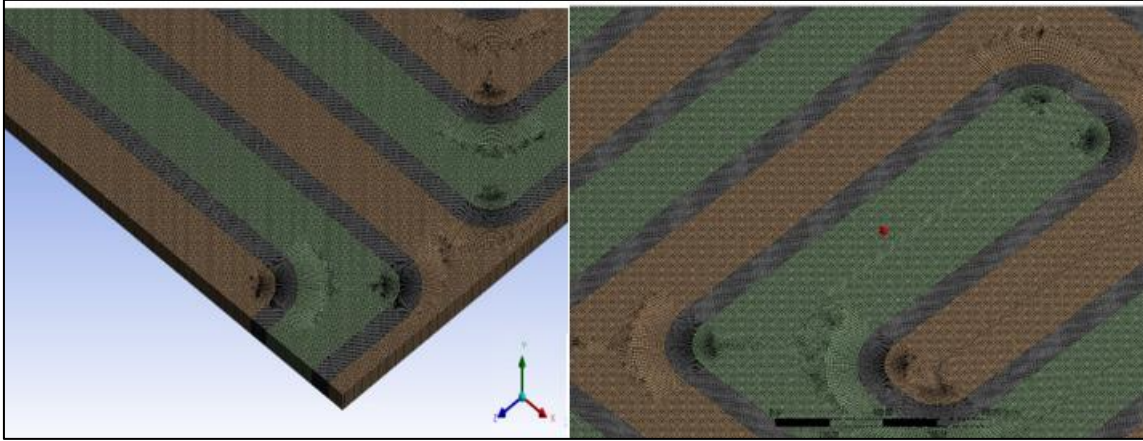


Figure 3.4: Mesh Generation Results.

3.7 BOUNDARY AND INITIAL CONDITION

a. Initial conditions.

No transfer of heat between the systems happens at the initial time $t = 0$,

$$Ts(x, y, t)|_{t=0} = Tl(x, y, t)|_{t=0} = T_m$$

b. Boundary conditions.

- i. Inlet: HTF at the entrance was chosen to have a velocity inlet boundary condition type.
- ii. Outlet: Pressure outlet type for HTF at exits was selected as the boundary condition type.
- iii. The energy balance is satisfying at the interface region.

[The heat absorbed from solid phase] – [The Heat added to liquid phase] = [Latenet heat]

$$-(Q_s - Q_l) = \rho \cdot h_{s-l} \frac{d(x,y)}{dt} \text{ at } 0 \leq x \leq w \text{ and } 0 \leq y \leq z \quad (3.19)$$

c. Walls: They were in adiabatic thermal condition since the back wall was thought to be entirely insulated. It was administered at a constant temperature, other than the walls between PCMs and HTF.

4. RESULTS AND DISSCUSIONS

The results obtained from the theoretical study of PCM, Implementation on the floor of the building for the purpose of energy modernization within residential buildings is summarized in this chapter. Theoretical results included the charging and discharging processes, as well as temperature distribution with and without the PCM, and finding the optimal value for the coolant, which is water.

4.1 ARGING PROCESS

Charging of PCM is defined as the active storage system subjected to forced convective transfer and it transfers that stored heat with the help of heat exchanger and solar associate components. The amount of heat generated during the process depends on specific heat of the system [66].

Figure (4.1) shows the relationship between charging time and average volume of the liquid fraction.

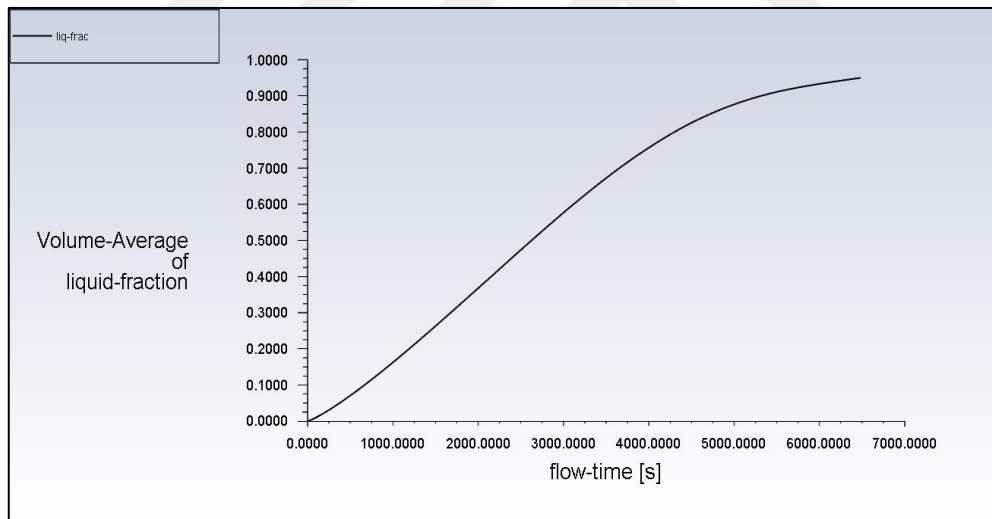


Figure 4.1: Volume-Average of Liquid Fraction with Time.

Figures from (4.2) to (4.7) show the melting process of paraffin, where the melting process begins after the passage of (30mins), and the melting moves from the outer edges and continues with time, as shown in the figures, so that the melting moves to the center and the melting increases until we reach a complete melting after the passage of (150mints), and the reason is due to The heat gain of paraffin transferred from the hot atmosphere to the paraffin, and the enthalpy of paraffin affects the speed of melting.

Increasing the melting time of paraffin will provide a comfortable environment, but one of its disadvantages is its low thermal conductivity, so it is recommended to mix it with other materials such as nanomaterials or porous materials or put fins that improve the heat transfer process.

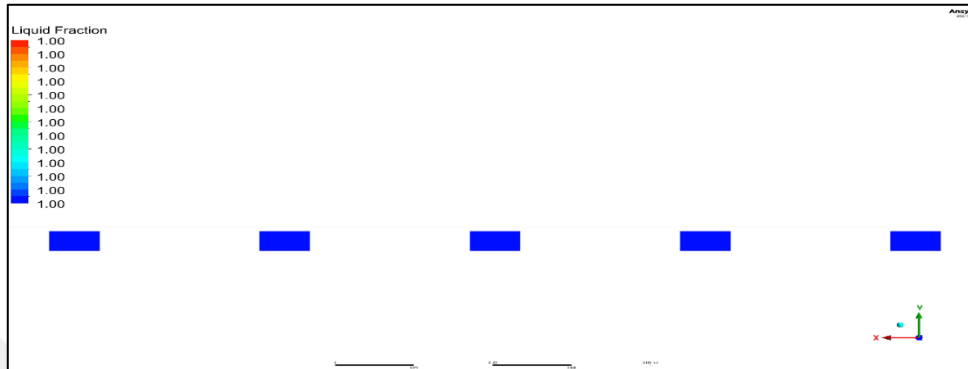


Figure 4.2: Charging Process After (0) Mints.

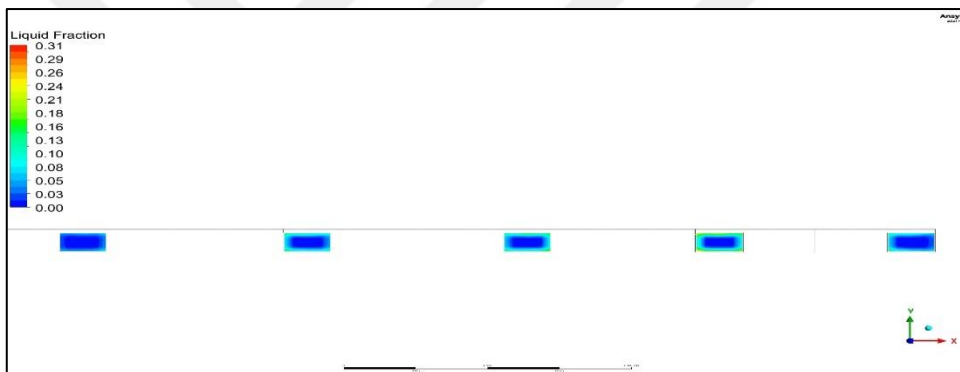


Figure 4.3: Charging Process After (30) Mints.

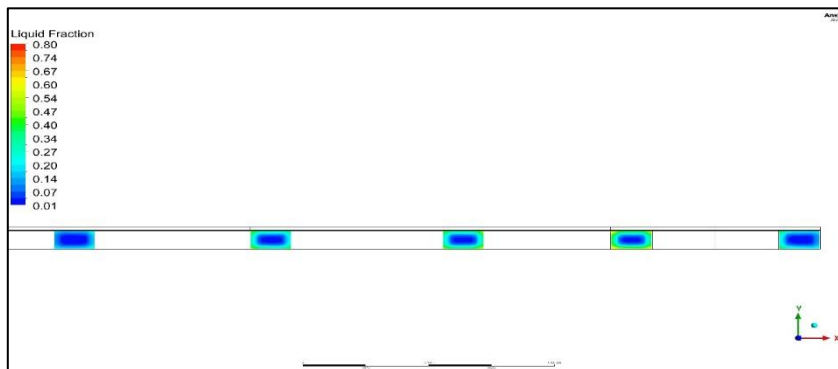


Figure 4.4: Charging Process After (60) Mints.

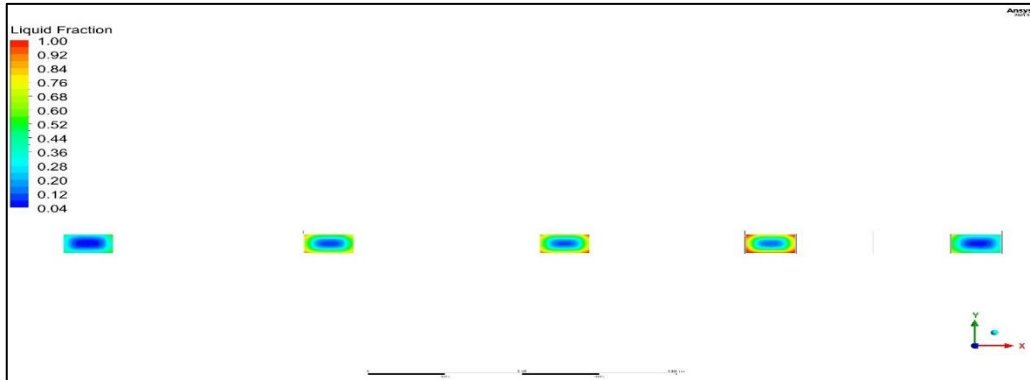


Figure 4.5: Charging Process After (90) Mints.

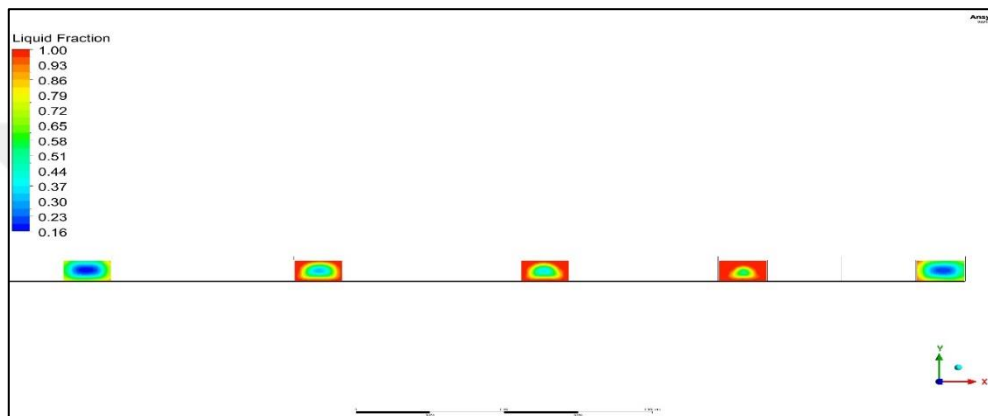


Figure 4.6: Charging Process After (120) Mints.

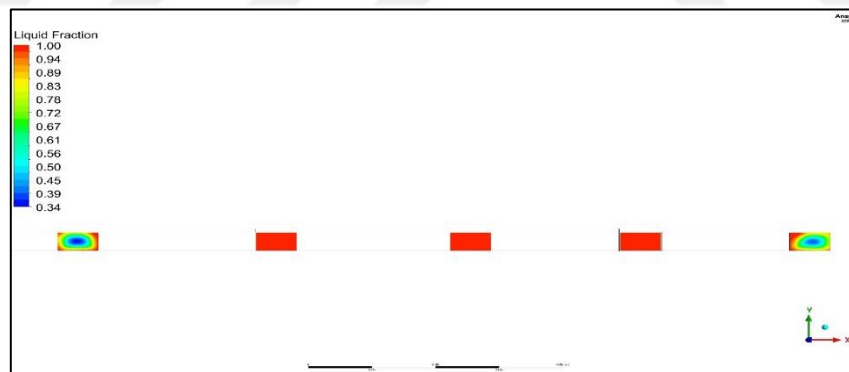


Figure 4.7: Charging Process After (150) Mints.

4.2 DISCHARGING PROCESS

Discharging in phase change materials is defined as the releasing of heat in order to solidify or cool the material to measure its thermodynamic and thermal heat release rate of the material with respect to time [67].

Figure (4.8) shows the relationship between discharging time and average volume of the liquid fraction.

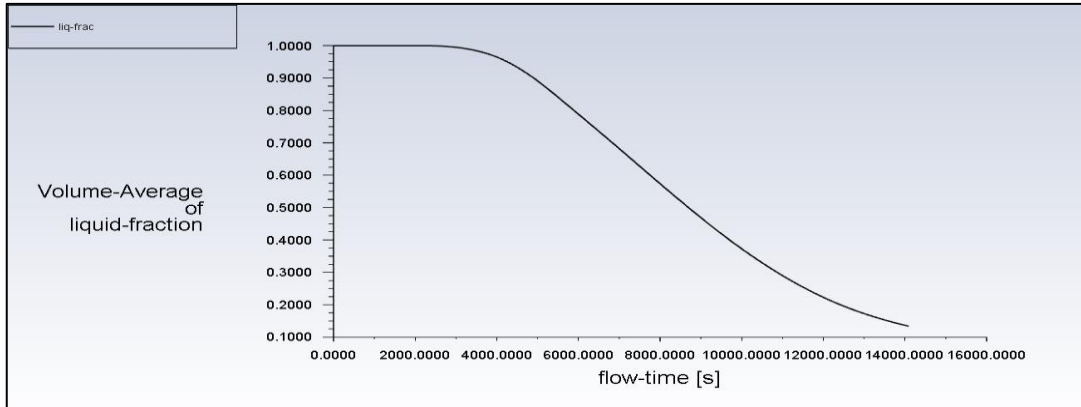


Figure 4.8: Volume-Average of Liquid Fraction with Time.

Figures from (4.9) to (4.14) show the solidification process of paraffin material, where the process of solidification or re-cooling begins after the passage of (40mints) as it is noted that the solidification begins or grows from the outer edges of the surface and continues towards the inside with time as illustrated by the figures, then the solidification increases to move to the centre until we reach to total hardening after passing (180mints) and the reason is due to the thermal loss of the paraffin due to the cold air that touches or touches the paraffin. Increasing the paraffin hardening time will provide a comfortable environment.

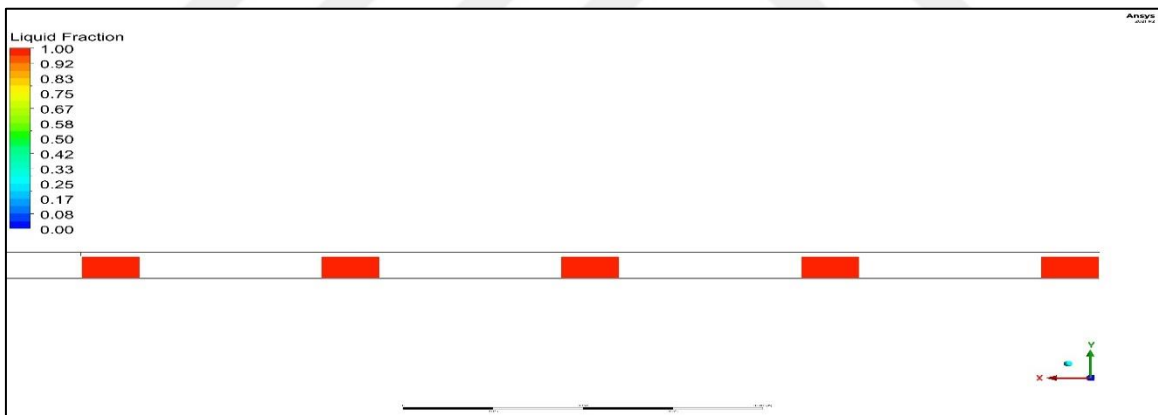


Figure 4.9: Discharging Process After (10) Mints.

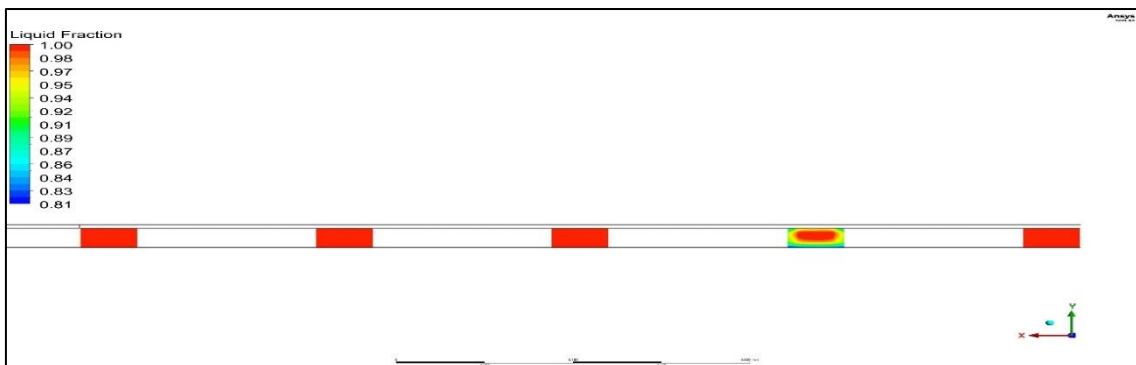


Figure 4.10: Discharging Process After (40) Mints.

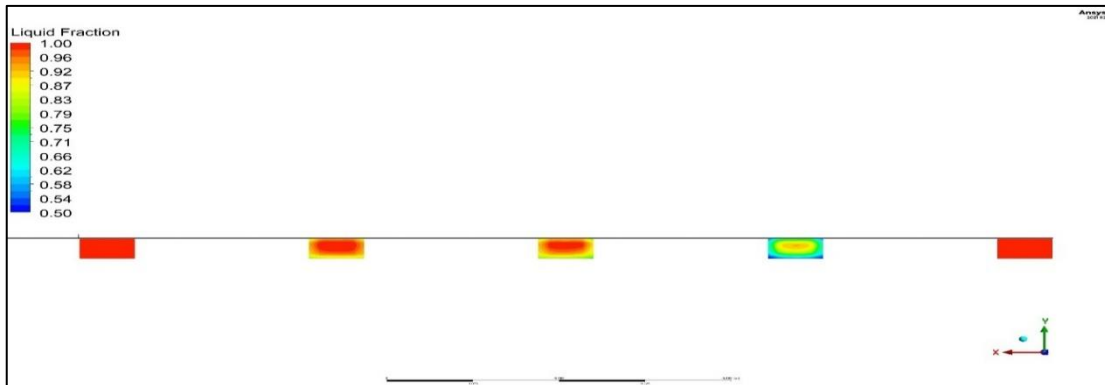


Figure 4.11: Discharging Process After (80) Mints.

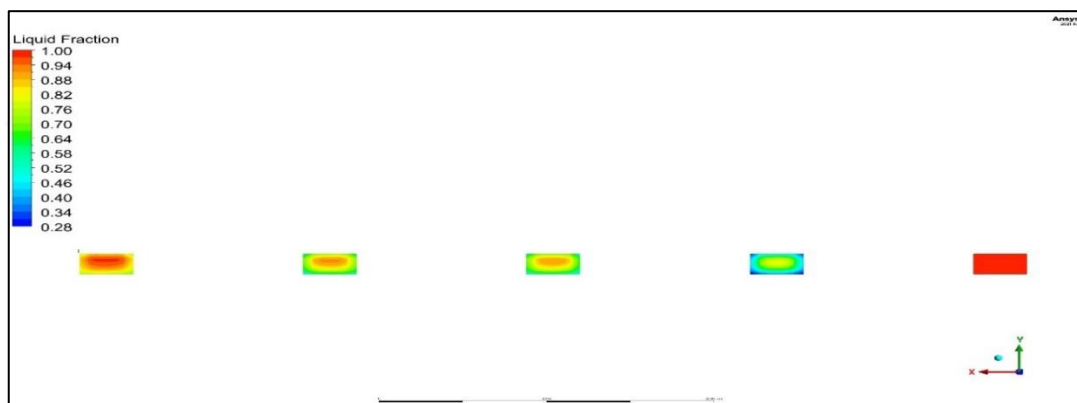


Figure 4.12: Discharging Process After (160) Mints.

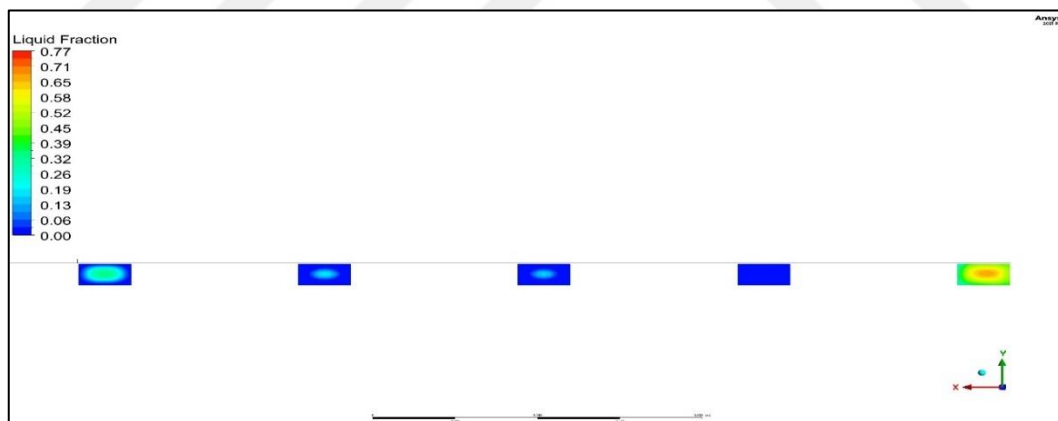


Figure 4.13: Discharging Process After (180) Mints.

4.3 TEMPERATURE VARIATIONS WITHOUT PCM

The process of providing a comfortable environment by cooling the floor of the house using a cooling fluid such as water has taken an important place in recent studies because it saves a large part of the daily energy consumption and keeps the cooling equipment from damage by extending its life, as the figures from (4.15) to (4.18) show the temperature distribution through the floor A room provided with cold water with a specific discharge rate at a certain

temperature, where it is observed how the temperatures decrease with time due to the heat exchange between the water and the floor.

It is also noted that the decrease in temperatures by approximately (2-3 °C) over a period of time up to an hour and a half and with a water discharge rate of (0.5 kg/sec) is a good and acceptable thing, but it requires a continuity of water supply, which can be provided through water cooled by an evaporative cooler, and in turn we guarantee less cost and cold and continuous water.

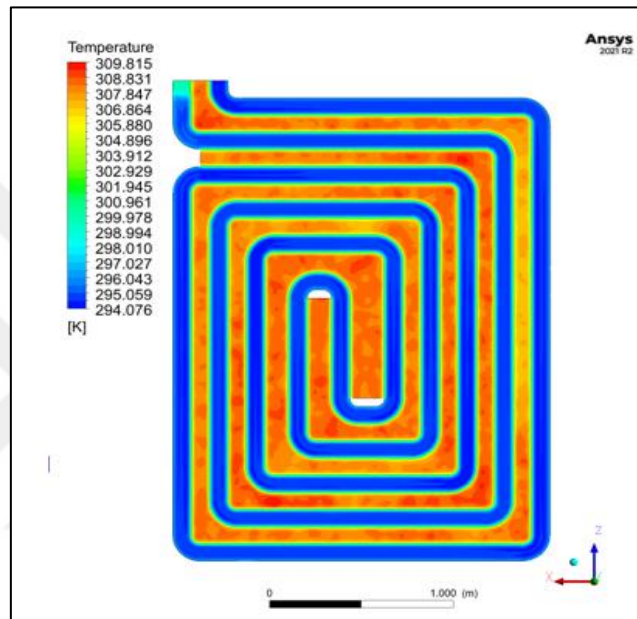


Figure 4.14: Temperature with Water After (10) Min.

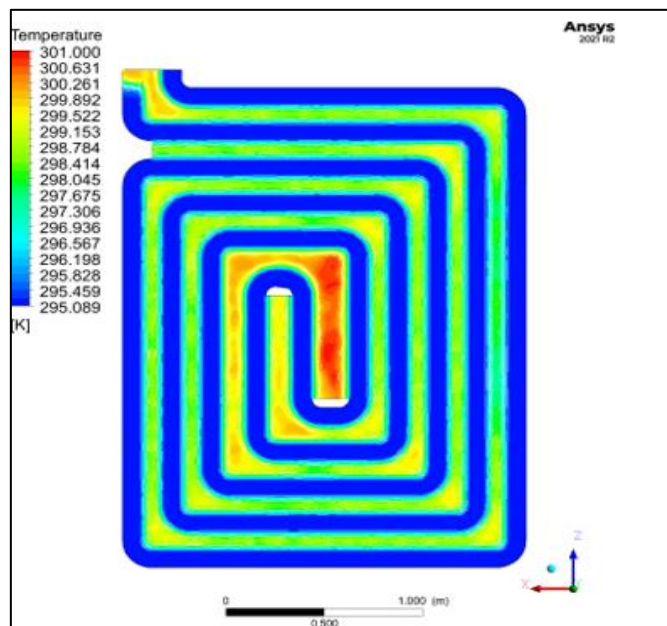


Figure 4.15: Temperature with Water After (20) Min.

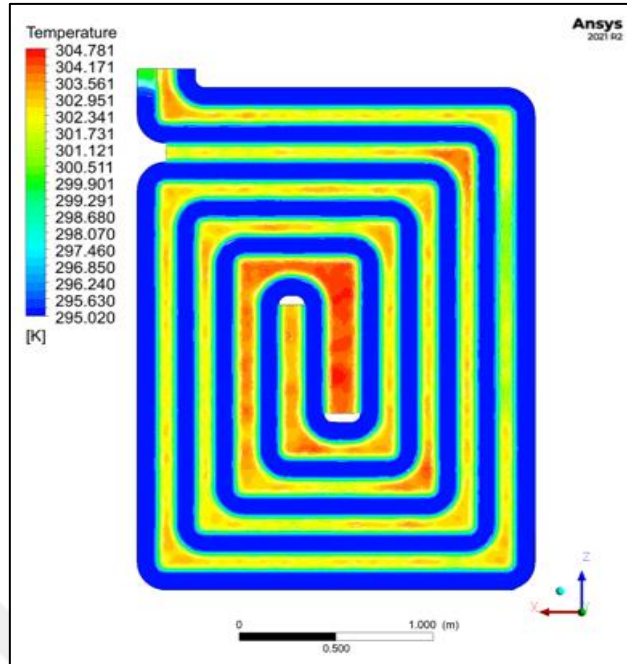


Figure 4.16: Temperature with Water After (30) Min.

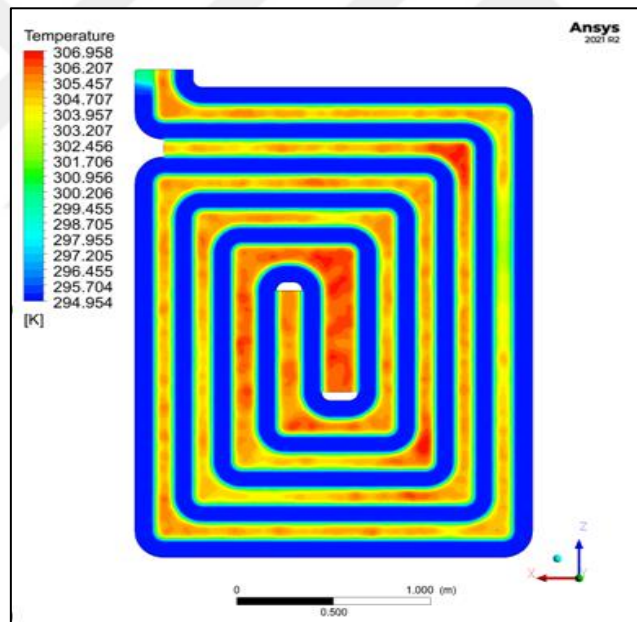


Figure 4.17: Temperature with Water After (40) Min.

4.4 TEMPERATURE VARIATIONS WITH PCM

The process of incorporating phase-changing materials into buildings such as walls, ceilings, and floors is of utmost importance in storing and transmitting energy and maintaining appropriate temperatures. paraffin, which led to a decrease in temperatures by approximately (1.5-2.5°C) and within 3 hours.

The reason for this is due to the heat exchange between the air in contact with the paraffin, and it was also shown that the temperature distribution is homogeneous and regular due to the high density of the paraffin.

Table (4.1) shows the difference in temperature using a phase-changing material inside the ceilings of previous works and compares it with the current work.

Table 4.1: Comparison of Temperature Reduction for Previous Articles.

No.	References.	Temperature Reduction°C
1	[68]	1.09
2	[69]	1.2
3	[70]	1.8
4	[71]	2-3
5	[72]	1.9
7	Current work	1-3

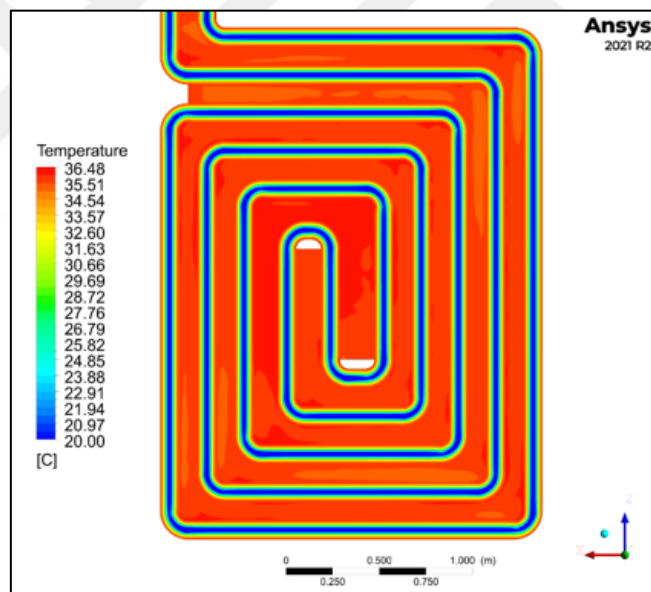


Figure 4.18: Temperature with Water After (10) Min.

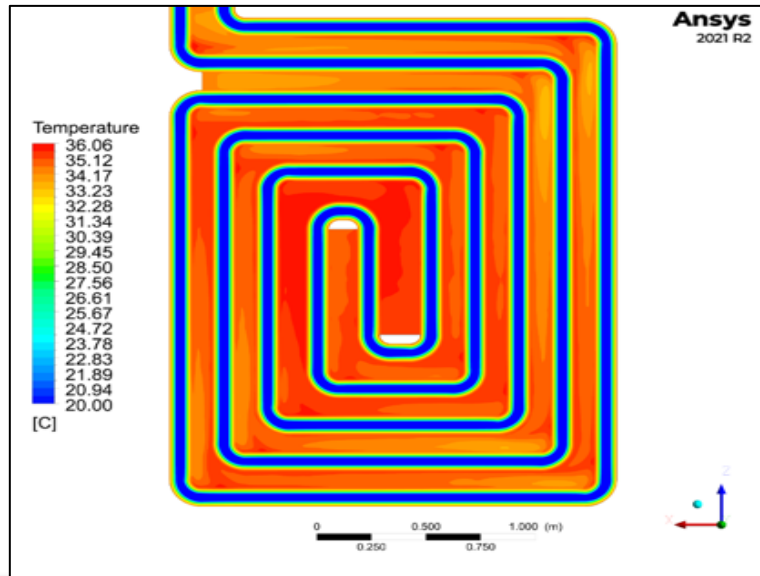


Figure 4.19: Temperature with Water After (20) Min.

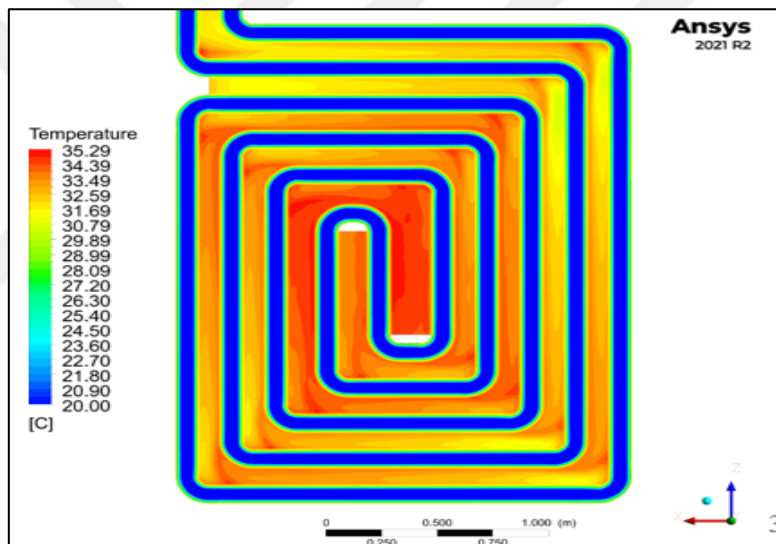


Figure 4.20: Temperature with Water After (30) Min.

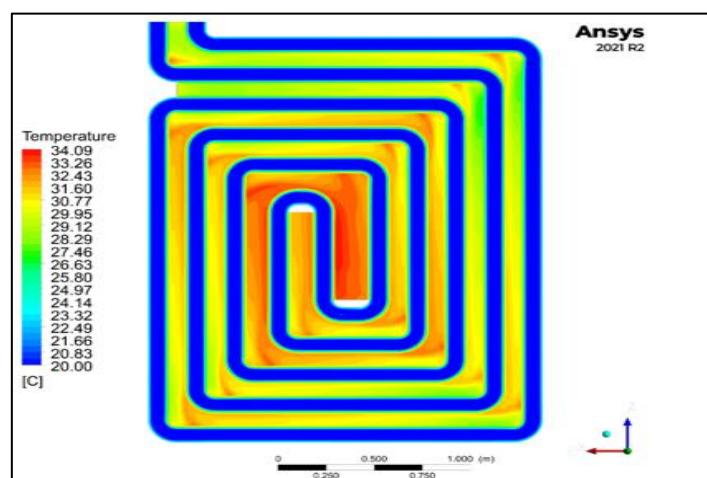


Figure 4.21: Temperature with Water After (40) Min.

5. CONCLUSIONS AND FUTURE WORK

current research dealt with the importance of incorporating a phase-changing material into the floors of buildings.

Through the study, the following points were found:

- a. The melting onset time for the proposed design is (30 mints), while the complete melting time for paraffin is (150 mints).
- b. The time of the onset of solidification is (40 mints) while the complete solidification of paraffin took (180 mints)
- c. Decrease in the surface temperature of the floor by using water by approximately (2-3°C).
- d. The decrease in the surface temperature of the earth by using a phase change material by approximately (1.5-2.5°C)
- e. The melting temperature range of paraffin between (26-29)
- f. The freezing temperatures of paraffin between (22-26)
- g. PCM material used in application of residence cooling, its phase conversion temperature must be within comfort temperature range 22 to 27°C.

REFERENCES

- [1] Mialla Mohammed and Ezzat. Akram, "Thermal Characteristics Optimization of Phase Change Walls in Zero Energy Buildings.", Ph.D. thesis, University of Baghdad, Mechanical Engineering Department, 2021.
- [2] Utkarsh Chadha, "Phase Change Materials in Metal Casting Processes: A Critical Review and Future Possibilities", *Advances in Materials Science and Engineering* Volume 2022, 14.
- [3] Joudi Khalid and Hussein Ali, "Cooling Load Calculations for Typical Iraqi Roof and Wall Constructions Using Ashrae's RTS Method", *Journal of Engineering*, Volume 21, 2015.
- [4] Paraschiv Simona, Paraschiv Spiru and Lon Ion, "Increasing the energy efficiency of buildings by thermal insulation", University of Galati, Romania, Elsevier, *Energy Procedia*, 128, 393–399, 2017.
- [5] Wendy Miller, Crompton Glenn and Bell John, "Analysis of Cool Roof Coatings for Residential Demand Side Management in Tropical Australia", School of Chemistry, Physics and Mechanical Engineering, Science and Engineering Faculty, Queensland University of Technology, Australia, *Energies*, Vol. 8, 5303-5318, 2015.
- [6] R. Almeida, R. Vicente, A. Ventura. Experimental and Numerical Simulation of a Radiant Floor System: The Impact of Different Screed Mortars and Floor Finishings. *Materials* 2022, 15, 1015. [https:// doi.org/10.3390/ma15031015](https://doi.org/10.3390/ma15031015).
- [7] M. Plytaria, C. Tzivanidis, E. Bellos, K.A. Antonopoulos, Energetic investigation of solar assisted heat pump underfloor heating systems with and without phase change materials, *Energy Conversion and Management* 173 (2018) 626-639.
- [8] M. Plytaria, E. Bellos, C. Tzivanidis, K.A. Antonopoulos, Financial and energetic evaluation of solar-assisted heat pump underfloor heating systems with phase change materials, *Applied Thermal Engineering* 149 (2019) 548-564.

- [9] S. Lu, H. Tong, B. Pang, Study on the coupling heating system of floor radiation and sunspace based on energy storage technology, *Energy and Buildings* 159 (2018) 441-453.
- [10] L. Royon, L. Karim, A. Bontemps, Optimization of PCM embedded in a floor panel developed for thermal management of the lightweight envelope of buildings, *Energy and Buildings* 82 (2014) 385-390.
- [11] L. Royon, L. Karim, A. Bontemps, Thermal energy storage and release of a new component with PCM for integration in floors for thermal management of buildings, *Energy Build.* 63 (2013) 29–35.
- [12] L. Royon, L. Karim, A. Bontemps, study of PCM integrated in a floor panel developed for thermal management of the lightweight envelope of buildings, *Energy Build.* 82 (2016) 380–385.
- [13] X. Xu, Y.P. Zhang, K.P. Lin, H.F. Di, R. Yang, Modeling and simulation on the thermal performance of shape-stabilized phase change material floor used in passive solar buildings, *Energy Build.* 37 (2005) 1084–1091.
- [14] Y.P. Zhang, K.P. Lin, R. Yang, H.F. Di, Y. Jiang, Preparation, thermal performance and application of shape-stabilized PCM in energy efficient buildings, *Energy Build.* 38 (2006) 1262–1269.
- [15] Y. Xia, X.S. Zhang, Experimental research on a double-layer radiant floor system with phase change material under heating mode, *Appl. Therm. Eng.* 96 (2016) 600–606.
- [16] J.F. Belmonte, P. Eguía, A.E. Molina, J.A. Almendros-Ibáñez, ~ Thermal simulation and system optimization of a chilled ceiling coupled with a floor containing a phase change material (PCM), *Sustain. Cities Soc.* 14 (2015) 154–170.
- [17] K. Nagano, et al., Study of a floor supply air conditioning system using granular phase change material to augment building mass thermal storage—heat response in small scale experiments. *Energy and Buildings*, 2006. 38(5): p. 436-446.

- [18] K. Nagano. Development of the PCM floor supply air-conditioning system, in *Thermal Energy Storage for Sustainable Energy Consumption*. 2007, Springer. p. 367-373.
- [19] S.Wang, P. Matiasovský,. Experimental investigation of the daily thermal performance of a mPCM honeycomb wallboard. *Energy Build* 2018; 159:419–25.
- [20] M. Ning, H. Jingyu. Investigations on thermal environment in residential buildings with PCM embedded in external wall. *Energy Procedia* 2017; 142:1888–95.
- [21] X. Jin, X. Zhang, Y Luo. A calculation method for the floor surface temperature in radiant floor system. *Energy and Buildings* 42 (2010) 1753–1758.
- [22] L. Karim, F. Barbeon, P. Gegout, A. Bontemps, L. Royon, New phase-change material components for thermal management of the light weight envelope of buildings, *Energy Build.* 68 (2014) 703–706,
- [23] H.B. Kim, M. Mae, Y. Choi, Application of shape-stabilized phase-change material sheets as thermal energy storage to reduce heating load in Japanese climate, *Build. Environ.* (2017).
- [24] K. Lin, Y. Zhang, X. Xu, H. Di, Experimental study of under-floor electric heating system with shape-stabilized PCM plates, *Energy Build.* 37 (2005) 215–220.
- [25] S. Baek , S. Kim, Analysis of Thermal Performance and Energy Saving Potential by PCM Radiant Floor Heating System based on Wet Construction Method and Hot Water, *Energies* 2019, 12, 828.
- [26] R. Almeida, R.Vicente, A.Ventura. Experimental and Numerical Simulation of a Radiant Floor System: The Impact of Different Screed Mortars and Floor Finishings. *Materials* 2022, 15, 1015.
- [27] Lin, K.; Zhang, Y.; Di, H.; Yang, R. Study of an Electrical Heating System with Ductless Air Supply and Shape-Stabilized PCM for Thermal Storage. *Energy Convers. Manag.* 2007, 48, 2016–2024.

- [28] Bastani, A.; Haghghat, F.; Manzano, C.J. Investigating the effect of control strategy on the shift of energy consumption in a building integrated with PCM wallboard. *Energy Procedia* 2015, 78, 2280–2285.
- [29] Mazo, J.; Delgado, M.; Marin, J.M.; Zalba, B. Modeling a Radiant Floor System with Phase Change Material (PCM) Integrated into a Building Simulation Tool: Analysis of a Case Study of a Floor Heating System Coupled to a Heat Pump. *Energy Build.* 2012, 47, 458–466.
- [30] Hong, T.; Wang, S.; Wang, F.; Wang, X. Experimental Study on the Demand Shifting Effects of PCM Integrated Air-Conditioning Duct. *IOP Conf. Ser. Earth Environ. Sci.* 2019, 238, 012048.
- [31] Hong, T.; Wang, S.; Wang, F.; Wang, X. Study on the Optimization of PCM Integrated Air-Conditioning Duct for the Demand Shifting. *IOP Conf. Ser. Earth Environ. Sci.* 2019, 238, 12045.
- [32] Faraj, K.; Faraj, J.; Hachem, F.; Bazzi, H.; Khaled, M.; Castelain, C. Analysis of Underfloor Electrical Heating System Integrated with Coconut Oil-PCM Plates. *Appl. Therm. Eng.* 2019, 158. [CrossRef]
- [33] Sun, W.; Zhang, Y.; Ling, Z.; Fang, X.; Zhang, Z. Experimental Investigation on the Thermal Performance of Double-Layer PCM Radiant Floor System Containing Two Types of Inorganic Composite PCMs. *Energy Build.* 2020, 211, 109806.
- [34] Valizadeh, S.; Ehsani, M.; Torabi Angji, M. Development and thermal performance of wood-HPDE- PCM nanocapsule floor for passive cooling in building. *Energy Sources Part A Recovery Util. Environ. Eff.* 2019, 41, 2114–2127.
- [35] Yun, B.Y.; Yang, S.; Cho, H.M.; Wi, S.; Kim, S. Thermal Storage Effect Analysis of Floor Heating Systems Using Latent Heat Storage Sheets. *Int. J. Precis. Eng. Manuf. Green Technol.* 2019, 6, 799–807.
- [36] Guo, J.; Dong, J.; Wang, H.; Jiang, Y.; Tao, J. On-site measurement of the thermal performance of a novel ventilated thermal storage heating floor in a nearly zero energy building. *Build. Environ.* 2021, 201, 107993. [CrossRef]

- [37] R. Ansuini, R. Larghetti, A. Giretti, M. Lemma, Radiant floors integrated with PCM for indoor temperature control, *Energy Build.* 43 (2011) 3019–3026.
- [38] K.L. Huang, G.H. Feng, J.S. Zhang, Experimental and numerical study on phase change material floor in solar water heating system with a new design, *Sol. Energy* 105 (2014) 126–138.
- [39] J.F. Belmonte, P. Eguía, A.E. Molina, J.A. Almendros-Ibáñez, Thermal simulation and system optimization of a chilled ceiling coupled with a floor containing a phase change material (PCM), *Sustain. Cities Soc.* 14 (2015) 154–170.
- [40] K. Lin, Y. Zhang, X. Xu, H. Di, Experimental study of under-floor electric heating system with shape-stabilized PCM plates, *Energy Build.* 37 (2005) 215–220.
- [41] Z. Yinping, G. Zhou, R. Yang, K. Lin, Our research on shape-stabilized PCM in energy-efficient buildings, *Proceeding Ecostock 10th* (2006) 1–9.
- [42] R. Ansuini, R. Larghetti, A. Giretti, M. Lemma, Radiant floors integrated with PCM for indoor temperature control, *Energy Build.* 43 (11) (2011) 3019–3026.
- [43] L. Royon, L. Karim, A. Bontemps, Thermal energy storage and release of a new component with PCM for integration in floors for thermal management of buildings, *Energy Build.* 63 (2013) 29–35.
- [44] L. Karim, F. Barbeon, P. Gegout, A. Bontemps, L. Royon, New phase-change material components for thermal management of the light weight envelope of buildings, *Energy Build.* 68 (2014) 703–706,
- [45] K. Huang, G. Feng, J. Zhang, Experimental and numerical study on phase change material floor in solar water heating system with a new design, *Sol. Energy* 105 (2014) 126–138.
- [46] G. Zhou, J. He, Thermal performance of a radiant floor heating system with different heat storage materials and heating pipes, *Appl. Energy* 138 (2015) 648–660.

- [47] R. Barzin, J.J.J. Chen, B.R. Young, M.M. Farid, Application of PCM underfloor heating in combination with PCM wallboards for space heating using price based control system, *Appl. Energy* 148 (2015) 39–48.
- [48] W. Cheng, B. Xie, R. Zhang, Z. Xu, Y. Xia, Effect of thermal conductivities of shape stabilized PCM on under-floor heating system, *Appl. Energy* 144 (2015) 10–18.
- [49] H. Thieblemont, F. Haghghat, A. Moreau, Thermal energy storage for building load management: application to electrically heated floor, *Appl. Sci.* 194 (7) (2016).
- [50] Y. Zhou, S. Zheng, H. Chen, G. Zhang, Indoor and built thermal performance and optimized thickness of active shape-stabilized PCM boards for side-wall cooling and under-floor heating system, *Indoor Built Environ.* 25 (8) (2016) 1279–1295.
- [51] P. Devaux, M.M. Farid, Benefits of PCM underfloor heating with PCM wallboards for space heating in winter, *Appl. Energy* 191 (2017) 593–602.
- [52] S. Lu, H. Tong, B. Pang, Study on the coupling heating system of floor radiation and sunspace based on energy storage technology, *Energy Build.* 159 (2018) 441–453.
- [53] M.T. Plytaria, C. Tzivanidis, E. Bellos, K.A. Antonopoulos, Energetic investigation of solar assisted heat pump under floor heating systems with and without phase change materials, *Energy Convers. Manag.* 173 (2018) 626–639. August.
- [54] Jaworski Maciej, Jędrzejuk Hanna., Laskowski Rafał., "Experimental Study of Heat Storage Unit Made of PCM-gypsum Composite Integrated with the Ventilation System of the Building", Vilnius Gediminas Technical University, Lithuania, Environmental Engineering, 10th International Conference, (2017).
- [55] Ahmed Ahmed., Khalifa Abdulhadi. and Hammad Ahmed, "Experimental and Numerical Simulation of Air Flow and Temperature Distribution of Air Conditioning Space", M.Sc. Thesis, Middle Technical University, Engineering Technical Collage\Baghdad, 2007.

- [56] Cengel Yunus Ali, "Heat Transfer A Practical Approach", Text Book, Second Edition, Mcgraw-Hill, 2002.
- [57] Arpaci V. S., "Conduction Heat Transfer", Text Book.
- [58] Haruka Kitagawa, Takashi Asawa, Maria Alejandra Del Rio, Tetsu Kubota, Andhang Rakhmat Trihamdani, "Thermal storage effect of radiant floor cooling system using phase change materials in the hot and humid climate of Indonesia", Building and Environment, Vol 207, Part B, January 2022, 108442.
- [59] Fan Liwu, Khodadadi J.M., "Thermal Conductivity Enhancement of Phase Change Materials for Thermal Energy Storage", Department of Mechanical Engineering, Auburn University, Elsevier, Renewable and Sustainable Energy Reviews 15, 24–46, 2011.
- [60] ASHRE, HVAC System and Equipment, (SI Edition), 2008.
- [61] Defraeye Thijs, Blocken Bert and Carmeliet Jan, "Convective heat transfer coefficients for exterior building surfaces: Existing correlations and CFD modelling", Energy Conversion and Management, 2010.
- [62] Dobson, R. T., "Thermal modelling of a night sky radiation cooling system", Department of Mechanical Engineering, University of Stellenbosch, Journal of Energy in Southern Africa, Vol. 16, No. 2, 2005.
- [63] Benjamin Young, Alexander Thiele, Amanda Fujii, Gaurav Sant, Laurent Pilon, "Thermophysical Properties of PCM", UCLA Henry Samueli School of Engineering and Applied Sciences, 2013.
- [64] Bourdakis, E., Pean, T. Q., Gennari, L., & Olesen, B. W. (2016). Daytime space cooling with phase change material ceiling panels discharged using rooftop photovoltaic/thermal panels and night-time ventilation. Science and Technology for the Built Environment, 22(7), 902-910. DOI: 10.1080/23744731.2016.

- [65] Carli Michele and Olesen Bjarne, "The Use of Phase Change Materials for Cooling of Building Combined with Night Sky Radiant Cooling", Thesis Technical University of Denmark, 2015.
- [66] Haruka Kitagawa, Takashi Asawa, Maria Alejandra Del Rio, Tetsu Kubota, Andhang Rakhmat Trihamdani," Thermal storage effect of radiant floor cooling system using phase change materials in the hot and humid climate of Indonesia", Building and Environment, Vol 207, Part B, January 2022, 108442.
- [67] Qudama Al-Yasiri and Márta Szabó," Experimental study of PCM-enhanced building envelope towards energy-saving and decarbonization in a severe hot climate", Energy & Buildings 279 (2023) 112680.
- [68] Sajadi, Behrang. and Baniassadi, Amir," On the effect of using phase change materials in energy consumption and CO2 emission in buildings in Iran: a climatic and parametric study", Energy Equipment and Systems, energy equip. sys, Vol. 3, No.2, P.p. 73-81, 2015.
- [69] Abbas Ahmed Hasan, Najim Abid Jassim "Hybrid Space Cooling System for Energy Saving and Shifting", Ph.D. Thesis, University of Baghdad, Mechanical Engineering Department, 2020.
- [70] Mohammed H. Alhamdo, Maathe A. Theeb, Jaafar J. Abdulhameed," Using Evaporative Cooling Methods for Improving Performance of an Air-cooled Condenser", Universal Journal of Mechanical Engineering 3(3):94-106, 2015.
- [71] Arfidian Rachman¹ and Lisa Nesti," Experimental Study to Performance Improvement of Vapor Compression Cooling System Integrated Direct Evaporative Cooler and Condenser", MATEC Web of Conferences 215, 01017 (2018).
- [72] Rahmat Iman Mainil, Ahmad Wisnu Sulaiman, Afdhal Kurniawan Mainil, Azridjal Aziz," Performance Enhancement of Split Air Conditioner During Evaporative Cooling Application", Journal of Advanced Research in Fluid Mechanics and Thermal Sciences 86, Issue 2 (2021) 147-156.

- [73] Md. R. Hasan, “A review on various designs of solar still,” *International Journal of Energy Technology*, vol. 2, no. 2, pp. 1–23, 2020, doi: 10.32438/ijet.202107.
- [74] Y. Zhou, S. Zheng, and G. Zhang, “A state-of-the-art-review on phase change materials integrated cooling systems for deterministic parametrical analysis, stochastic uncertainty-based design, single and multi-objective optimisations with machine learning applications,” *Energy Build*, vol. 220, pp. 1–20, 2020, doi: 10.1016/j.enbuild.2020.110013.
- [75] S. Kumar, S. Arun Prakash, V. Pandiyarajan, N. B. Geetha, V. Antony Aroul Raj, and R. Velraj, “Effect of phase change material integration in clay hollow brick composite in building envelope for thermal management of energy efficient buildings,” *J Build Phys*, vol. 43, no. 4, pp. 351–364, 2020, doi: 10.1177/1744259119867462.
- [76] M. M. Kenisarin, “High-temperature phase change materials for thermal energy storage,” *Renewable and Sustainable Energy Reviews*, vol. 14, no. 3, pp. 955–970, 2010, doi: 10.1016/j.rser.2009.11.011.
- [77] M. M. Kenisarin, “High-temperature phase change materials for thermal energy storage,” *Renewable and Sustainable Energy Reviews*, vol. 14, no. 3, pp. 955–970, 2010, doi: 10.1016/j.rser.2009.11.011
- [78] S. A. Memon, “Phase change materials integrated in building walls: A state of the art review,” *Renewable and Sustainable Energy Reviews*, vol. 31, pp. 870–906, 2014, doi: 10.1016/j.rser.2013.12.042.
- [79] N. Sarier, E. Onder, S. Ozay, and Y. Ozkiloglu, “Preparation of phase change material-montmorillonite composites suitable for thermal energy storage,” *Thermochim Acta*, vol. 524, no. 1–2, pp. 39–46, 2011, doi: 10.1016/j.tca.2011.06.009.
- [80] S. Singh, K. K. Gaikwad, and Y. S. Lee, “Phase change materials for advanced cooling packaging,” *Environ Chem Lett*, vol. 16, no. 3, pp. 845–859, 2018, doi: 10.1007/s10311-018-0726-7.

- [81] P. Manoj Kumar and K. Mylsamy, “Experimental investigation of solar water heater integrated with a nanocomposite phase change material,” *J Therm Anal Calorim*, vol. 136, no. 1, pp. 121–132, 2019, doi: 10.1007/s10973-018-7937-9.
- [82] Y. Zhou, S. Zheng, H. Chen, and G. Zhang, “Thermal performance and optimized thickness of active shape-stabilized PCM boards for sidewall cooling and under-floor heating system,” *Indoor and Built Environment*, vol. 25, no. 8, pp. 1279–1295, 2016, doi: 10.1177/1420326X16671983.

