

# **INVESTIGATION OF NUMERICAL ALGORITHMS APPLIED IN COMMUNITY DETECTION**



**2017  
M. Sc. Thesis  
Computer Engineering**

**AMNA. M. M.SALEM**

**INVESTIGATION OF NUMERICAL ALGORITHMS APPLIED IN  
COMMUNITY DETECTION**

**A THESIS SUBMITTED TO  
THE GRADUATE SCHOOL OF NATURAL AND APPLIED SCIENCES OF  
KARABUK UNIVERSITY**

**BY**

**AMNA. M. M. SALEM**

**IN PARTIAL FULFILLMENT FROM REQUIREMENTS FOR  
THE DEGREE OF MASTER OF SCIENCE IN  
DEPARTMENT OF  
COMPUTER ENGINEERING**

**July 2017**

I certify that in my opinion the thesis submitted by Amna M.M. SALEM titled “INVESTIGATION OF NUMERICAL ALGORITHMS APPLIED IN COMMUNITY DETECTION” is fully adequate in scope and in quality as a thesis for the degree of Master of Science.

Assoc. Prof. Dr. Oğuz FINDIK  
Thesis Advisor, Department of Computer Engineering



This thesis is accepted by the examining committee with a unanimous vote in the Department of Computer Engineering as a master thesis. July 4, 2017

Examining Committee Members (Institutions)

Chairman: Assist. Prof. Dr. Yüksel ÇELİK (KBU)

Member : Assoc. Prof. Dr. Oğuz FINDIK (KBU)

Member : Assist. Prof. Dr. İbrahim MAHARIQ (THK)

Signature



4/7/2017

The degree of Master of Science by the thesis submitted is approved by the Administrative Board of the Graduate School of Natural and Applied Sciences, Karabük University.

Prof. Dr. Filiz ERSÖZ  
Head of Graduate School of Natural and Applied Sciences





*“I declare that all the information within this thesis has been gathered and presented in accordance with academic regulations and ethical principles and I have according to the requirements of these regulations and principles cited all those which do not originate in this work as well.”*

Amna.M.M.SALEM

## **ABSTRACT**

**M. Sc. Thesis**

### **INVESTIGATION OF NUMERICAL ALGORITHMS APPLIED IN COMMUNITY DETECTION**

**Amna. M. M. SALEM**

**Karabük University**

**Graduate School of Natural and Applied Sciences**

**Department of Computer Engineering**

**Thesis Advisor:**

**Assoc. Prof. Dr. Oğuz FINDIK**

**July 2017, 58 pages**

Detecting communities in large real world graphs like, as large social or data networks is a topic of substantial notice. In practice, one classically chooses an impartial function that captures the instinct of a network cluster as usual of nodes by, well internal connectivity of outside connectivity, next one smears approximation algorithms then heuristics to extract groups of nodes that are connected to the impartial function and that decent communities for the request of interest. In this thesis we explore a variety of network community detection means in order to compare them to under stir relative presentation systematic biases in the groups they classify, We evaluate many common impartial functions that are used to formalize the impression of a network community, then we examine numerous dissimilar classes of approximation algorithms that goal to optimize like impartial functions. As well, somewhat of simply fixing an impartial and requesting for an approximation to the better cluster of slightly measure, we reflect an extent resolved version

optimization the trouble. As community, excellence as the meaning of its scope provides an ample better lens with which to inspect community detection algorithms, later impartial functions and estimate algorithms Predominatingly must non-obvious scope dependent behavior.

**Key Words** : Numerical methods, optimization algorithms, community detection.

**Science Code** : 902.1.063



## ÖZET

**Yüksek Lisans Tezi**

### **INVESTIGATION OF NUMERICAL ALGORITHMS APPLIED IN COMMUNITY DETECTION**

**Amna. M. M. SALEM**

**Karabük Üniversitesi**

**Fen Bilimleri Enstitüsü**

**Bilgisayar Mühendisliği Anabilim Dalı**

**Tez Danışmanı:**

**Doç. Dr. Oğuz FINDIK**

**July 2017, 58 sayfa**

Toplulukları, büyük sosyal ya da bilgi ağları gibi büyük gerçek dünya grafiklerinde saptamak önemli ilgi çeken bir sorundur. Gerçekte, tipik bir ağ kümesinin sezgisini harici bağlantıdan daha iyi dahili bağlantıya sahip düğümler kümesi olarak yakalayan bir amaç fonksiyonu seçilir, sonra amaç fonksiyonuyla ilişkili düğümler kümelerini ayıklamak için yaklaşım algoritmaları veya sezgiseller uygulanır ve bu ilgi(faiz) uygulaması için iyi topluluklara “benziyor”. Bu tezde onları karşılaştırmak, onların göreceli performanslarını ve tanımladıkları kümelerdeki sistematik önyargılarını anlamak için bir dizi ağ topluluğu tespit yöntemini keşfediyoruz, bir ağ topluluğunun fikrini resmileştirmek için kullanılan çeşitli ortak amaç fonksiyonlarını değerlendiriyoruz, ve bu amaç fonksiyonlarını optimize etmeyi amaçlayan birkaç farklı sınıf yaklaşım algoritmalarını inceliyoruz. Ayrıca basitçe bir amacı sabitlemek ve herhangi bir ölçümün daha iyi bir kümesine yaklaşım istemek yerine optimizasyon sorunundan boyutsal çözümlenmiş bir versiyon düşünüyoruz. Topluluk

kalitesini boyutunun bir fonksiyonu olarak göz önüne alırsak, topluluk algılama algoritmalarını incelemek için daha ince bir mercek sağlar; çünkü amaç fonksiyonları ve yaklaşım algoritmaları çoğunlukla belirgin olmayan boyuta bağlı davranışa sahiptir.

**Anahtar Kelimeler :** Sayısal yöntemler, optimizasyon algoritmaları, topluluk algılama.

**Bilim Kodu** : 902.1.063



## CONTENTS

	<u>Page</u>
APPROVAL.....	Hata! Yer işareti tanımlanmamış.
ABSTRACT .....	iv
ÖZET.....	vi
CONTENTS.....	viii
LIST OF FIGURES .....	xi
SYMBOLS AND ABBREVIATIONS INDEX .....	xii
CHAPTER 1 .....	1
INTRODUCTION .....	1
1.1. SOCIAL NETWORK.....	2
1.1.1. Social Network Analysis .....	3
1.1.2. Importance of Social Network Analysis .....	3
1.2. COMMUNITY .....	3
1.3. COMMUNITIES IN SOCIAL MEDIA .....	4
1.4. LITERATURE REVIEW .....	4
1.4.1. Spectral Bisection .....	4
1.4.2. Hierarchical Clustering.....	5
1.4.3. The Modularity Measure .....	6
1.4.4. Disadvantages .....	6
1.4.5. Max-Min Modularity .....	7
1.4.5. Clique Percolation Method .....	8
1.4.6. Stages of Clique Percolation Algorithm .....	9
1.4.7. Issues the Existing Methods .....	9
CHAPTER 2 .....	10
OPTIMIZATION OF ALGORITHMS.....	10
2.1. COMMUNITY DETECTION .....	10
2.1.2. Modularity Optimization .....	10

	<u>Page</u>
2.1.3. Greedy Techniques .....	10
2.1.4. Simulated Annealing .....	14
2.1.5. Extremal Optimization .....	15
CHAPTER 3 .....	18
NUMERICAL ALGORITHMS APPLIED IN COMMUNITY DETECTION.....	18
3.1. COMMUNITY ANALYSIS .....	18
3.2. COMMUNITY DETECTION ALGORITHM .....	19
3.3. ALGORITHM COMPLEX NETWORKS.....	19
3.3.1. Algorithm of Girvan and Newman.....	20
3.3.2. Quick Greedy Modularity Optimization .....	20
3.3.3. Exhaustive Modularity Optimization .....	20
3.3.4. Quick Modularity Optimization .....	20
3.3.5. Algorithm Hierarchical Technique.....	21
3.3.6. Cfinder.....	21
3.3.7. Markov Cluster Algorithm .....	22
3.3.8. Structural Algorithm.....	22
3.3.9. Dynamic Algorithm.....	23
3.3.10. Spectral Algorithm .....	23
3.3.11. Expectation-Maximization Algorithm.....	23
3.3.12. Potts Model Approach .....	24
3.4. DYNAMIC ALGORITHMS.....	24
3.5. RANDOM WALK .....	25
3.6. COMMUNITY DETECTION IN SYNCHRONIZATION .....	26
CHAPTER 4 .....	28
COMPARISON OF THE NUMERICAL METHODS .....	28
4.1. COMPARISON OF ALGORITHMS .....	28
4.1.1. Flow and Spectral Methods .....	28
4.1.2. Community Detection Algorithms .....	35
4.2. COMPARISON OF OBJECTIVE FUNCTIONS.....	40
4.2.1. Multi-Criterion Scores .....	40

	<u>Page</u>
4.2.2. Single Criterion Scores .....	45
4.3. RESULT .....	48
CHAPTER 5 .....	53
CONCLUSION .....	53
REFERENCES.....	55
RESUME .....	58



## LIST OF FIGURES

	<u>Page</u>
Figure 1.1. Community structure .....	3
Figure 1.2. Two networks with similar modularity score .....	7
Figure 1.3. A graph partition and its complement .....	8
Figure 1.4. Instances of cliques .....	8
Figure 2.1. Hierarchical optimization of modularity by Blondel et al. ....	15
Figure 2.2. Spectral optimization of modularity by Newman .....	17
Figure 4.1. Comparison of Local Spectral. ....	32
Figure 4.2. Two instances of cluster found by the Local Spectral algorithm .	35
Figure 4.3. NCP plots obtained via Graclus and Newman's Dendrogram algorithm. ....	38
Figure 4.4. Several ideas of community score as a measure of group measure. ....	44
Figure 4.5. Four concepts of community class based on modularity. ....	47
Figure 4.6. Lower bounds on better conductance cut. ....	51

## **SYMBOLS AND ABBREVIATIONS INDEX**

### **ABBREVIATIONS**

Log : Logarithmic

EO : Extremal Optimization

ALCA : Average Linkage Cluster Analysis



## CHAPTER 1

### INTRODUCTION

Detecting clusters or communities in real world graphs like as large social networks, web graphs, thus biological networks is a problem of considerable practical interest that has received a great deal of attention. A network community as well occasionally referred to as module or group is classically supposed of as group of nodes by additional an finest interactions amongst its associates of between its associates remainder from network in applications, this is significant to observing that heuristic methods and approximation algorithms for community detection frequently discovery, groups that are methodically “biased,” intelligence that they reappearance groups of nodes by properties that strength be considerably dissimilar of the usual of nodes that attains the global optimum selected impartial. instance, numerous spectral-based ways tend discovery compact groups the expenditure that they are not well separated from the respite network, so as additional techniques incline to find finest separated clusters that might inside be (fewer enjoyable). Furthermore, certain ways tend due chiefly well or chiefly poorly on certain types of graphs, for Instance, low-dimensional manifolds or expanders. Therefore, picture on that experiment, is of interest liken these algorithms on large real-world networks this must numerous multifaceted structural features similar sparsity, weighty tailed grade distributions, minor diameters. Furthermore, contingent on specific application possessions network existence analyzed, unique strength favor to identify exact kinds of clusters. [1]

As will comprehension structural possessions of groups identified via several algorithmic means and numerous objective purposes container guide in choosing the maximum appropriate graph clustering technique in the setting of set network and board request. [2]

In this thesis, we discover range various community detection ways in instruction elucidate these subjects and comprehend top the presentation and biases of numerous network community detection algorithms, dissimilar kind of networks. We consider a usual of additional of 40 networks, 12 common impartial functions this are utilized to formalize the idea of community excellence, and eight various classes of estimate algorithms discovery network communities. Unique must note this we are not first absorbed in finding the finest community detection way or maximum factual solemnization of a network community. Then impartial Underset structural possessions groups identified through many ways and contingent on the specific application one could choose the additional appropriate grouping way. We show numerous classes of empirical evaluations of means for network community detection to prove the Artefactual possessions and methodical biases of many community detection impartial functions and estimate algorithms. In addition, we else debate many Meta subjects related community detection algorithms in actual large graphs, counting whether current algorithms are adequately influential recover stimulating communities and similar not expressive communities be completely. Then will contrast preceding attempts assess community detection algorithms and impartial purposes, we consider measure resolved form from characteristic optimization trouble. That is, somewhat of simply fixative an impartial and requesting for estimate the better group of slightly measure or around fixed partitioning, we appeal for approximation to the better group for all likely measure. That offers much finer lens by that examine community detection algorithms, so impartial functions then approximation algorithms frequently must non-obvious measure dependent conduct.

## **1.1. SOCIAL NETWORK**

The basic notion of a social network is very simple. A social network container considered as a usual of nodes representing individuals or organizations with a dyadic or binary communication between them. It is typically represented via a graph  $G(V,E)$  so  $V$  is the usual of nodes representing the individuals and  $E$  is the usual of edges representing the interactions between them.

### 1.1.1. Social Network Analysis

SNA indicate to the process of extracting data from a social network regarding the individuals participating in it through mapping and measuring of connection and currents between the nodes that may represent persons, groups, organizations, computers, URLs and additional connected information entities .

### 1.1.2. Importance of Social Network Analysis

- Information's participation.
- Marketing in and business.
- Determine potent entities.
- Structure effective social and political campaign.
- Predict futurity events.

## 1.2. COMMUNITY

It is consists individuals such that inside a group interact by the apiece other more frequently of by those external the group. As will sometimes indicate as a unit or Compared cluster. Moreover, is classically supposed of as collection of nodes by additional or healthier connections among its associates of between Compared its organ remainder networks.

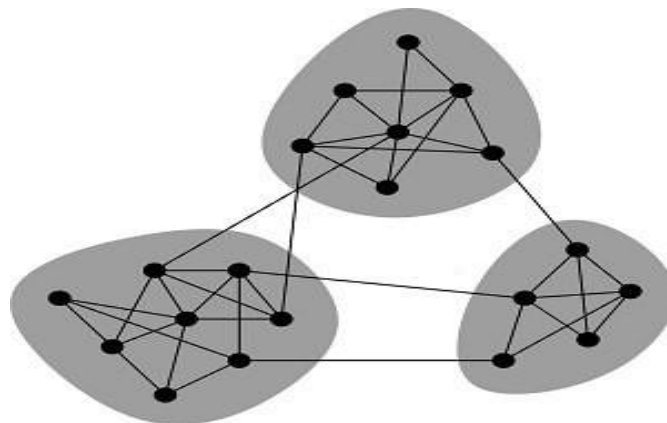


Figure 1.1. Community structure.

### 1.3. COMMUNITIES IN SOCIAL MEDIA

There are two kinds of clusters in social media

- Explicit clusters: formed by users
- Implicit clusters: implicitly formed by social interactions

### 1.4. LITERATURE REVIEW

#### 1.4.1. Spectral Bisection

A social network is ordinarily represented by an Objectiveless graph. The Laplacian of an Objectiveless graph  $G$  with  $n$  vertices is given by  $n \times n$  symmetric matrix  $L$ . The diagonal component  $L_{ii}$  from matrix  $L$  represents the grade of vertex  $i$ , and off-diagonal component  $L_{ij}$  is 1 if vertices  $i$  and  $j$  are linked in the assumed graph and zero otherwise. Thus, it can be concluded that  $L = D - A$ , so  $D$  is the slanting matrix of vertex grades and  $A$  is the adjacency matrix:

$$D_{ii} = \sum_j A_{ij} \quad (1.1)$$

Therefore, it can be easily concluded that all rows and columns from Laplacian matrix  $L$  add up to zero. Thus the vector  $\mathbf{1} = (1, 1, 1, \dots)$  is constantly an eigenvector by eigenvalue zero.

If it was the network can be separated perfectly hooked on communities, i.e., it can be divided hooked on  $g$  non-overlapping collections of vertices  $G_k$  ( $k = 1 \dots g$ ) like that there are edges only in the community and no between-community ones, thus the Laplacian resolve be block diagonal. Apiece diagonal block resolve the Laplacian of its own component, there for determination have an eigenvector  $v_k$  by eigenvalue zero and elements  $u_k(i) = 1$  if  $i \in G_k$  and 0 otherwise. Therefore, there will be  $g$  number of different eigenvectors by eigenvalue 0. [3]

If the network cannot be separated perfectly hooked on communities, thus the overhead condition will no lengthier be perfectly true. In general, there will stand

the one eigenvector by one eigenvalue zero, and  $g - 1$  eigenvalues somewhat greater of zero, then all eigenvalues graph Laplacian are non-negative one. The congruently eigenvectors will be assumed by linear combinations from eigenvectors  $v_k$ . Therefore, one necessity be able to find the blocks themselves, at smallest approximately by watching for eigenvalues from graph Laplacian only somewhat greater of zero and capturing linear combinations from consistent eigenvectors.

The disadvantages spectral bisection way that it lone bisects graphs, i.e., it divides the graph into two partitions. A larger number of community division can be achieved through recurrent bisection, and then this does not continuously stretch satisfactory consequences. In real world networks, we do not have any prior notion about how many communities are present and how many times the bisection must be performed.

#### **1.4.2. Hierarchical Clustering**

In Hierarchical Clustering method, a resemblance measure that is utilized to quantify some kind of resemblance between node pairs is defined. Usually topological resemblance is quantified. Several commonly utilized measures are the cosine resemblance, the Jaccard directory, Hamming distance between rows adjacency matrix. Thus, the alike nodes are grouped hooked on communities, rendering to this degree. There are various common schemes utilized to group the like nodes. Single linkage clustering method classifies two groups to be separate if node pairs between the groups have a likeness less of a given threshold value. In comprehensive linkage clustering, all nodes are considered to belong to the same group if they have similarity greater of threshold.

The advantage of hierarchical clustering method is this it does not need the measure or number of groups that we have to provide beforehand, thus, it has been applied to several social networks by predefined likeness metrics, like as the modularity and between less degree. However, they are usually sluggish Performance highly be contingent on the corresponding metrics.

### 1.4.3. The Modularity Measure

It is a property network that measures once the partition is good, in the meaning that there are many edges within the community and only a few between them. The notion is to compare the division to a randomized network with exactly the similar vertices and degree in which edges are placed randomly. [4]

Look a particular division of a network with  $k$  communities. The partition from graph into communities can be represented by a  $k \times k$  symmetric matrix. All element  $e_{ij}$  represents the fraction of edges between the communities  $i$  and  $j$ . So  $\sum_i e_{ii}$  stretches the fraction of edges that lie within the similar community.  $\sum_j e_{ij}$  gives the fraction of edges that has at minimum one end in community  $i$ .

- Modularity  $Q = (\text{digit of edges within groups}) - (\text{expected digit of edges within groups})$
- $Q = \sum_i (e_{ii} - a_i^2)$  (1.2)
- $e_{ii}$  = portion of edges present within community  $i$ .
- $a_i$  = Portion of edges that have at least one vertex within community  $i$ .

### 1.4.4. Disadvantages

- Needs, information about the entire structure from graph.
- Fail to identify communities smaller of a certain scale.
- Mensuration the existing links between the nodes but does not consider the absent links between the nodes in the same community.

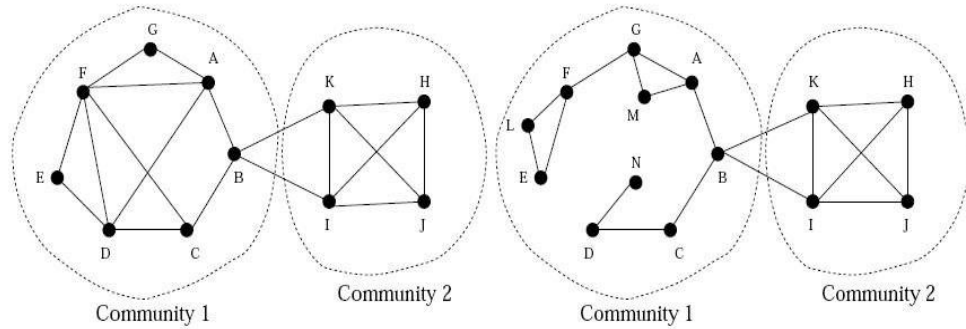


Figure 1.2. Two networks with similar modularity score but network in the right has more absent links of left one but network in the right has more absent links of left one links of left one right has more absent links than left one.

#### 1.4.5. Max-Min Modularity

The notion of MM Modularity is based on the innate knowledge that a good division of a network into communities is the one in which not only the digit of edges between groups is lesser of expected, but as well the one in which the number of unrelated pairs within groups is same of expected.

Assumed a graph  $G = (V, E)$  so  $V$  is the set of vertices and  $E$  is the set of edges, thereafter  $G' = (V, E')$  is said to be the complement graph of  $G$  if  $\forall i, j \in (i, j) \in E \Rightarrow (i, j) \notin E'$  and only if  $(i, j) \notin E$ . [5]

- Max-min Modularity(QMax–Min) = Modularity of Original graph  
Modularity of complement graph
- Events the existing links in a community, thus considers the absent links present in the same community.
- Cannot detect overlapping communities.

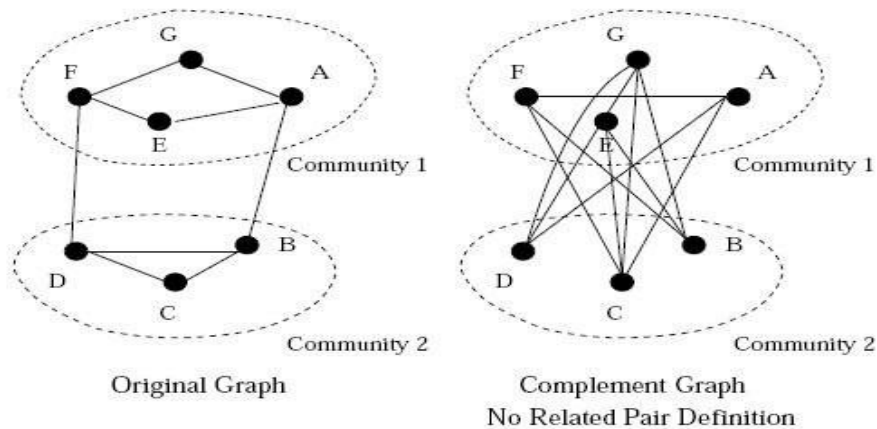


Figure 1.3. A graph partition and its complement.

### 1.4.5. Clique Percolation Method

The sequential clique percolation algorithm is an efficacious way of detecting meeting communities in a network. Given a graph  $G(V, E)$  so  $V$  and  $E$  signify the vertices and edges set the consecutive.  $S \subseteq G, \forall u, v \in S$  Such that  $u f = v$  and  $(u, v) \in E$ , thus  $S$  si said to be a clique.  $S$  is said to be maximal if there exists no  $S'$  like that  $S \subset S'$ . [6]

- A  $k$ -clique of a graph is a subset of vertices so that the subset is fully connected re is an edge between each and every pair of vertex, in the subset and measure from subset is  $k$ .
- A clique is a quite connected component of a graph. [7]

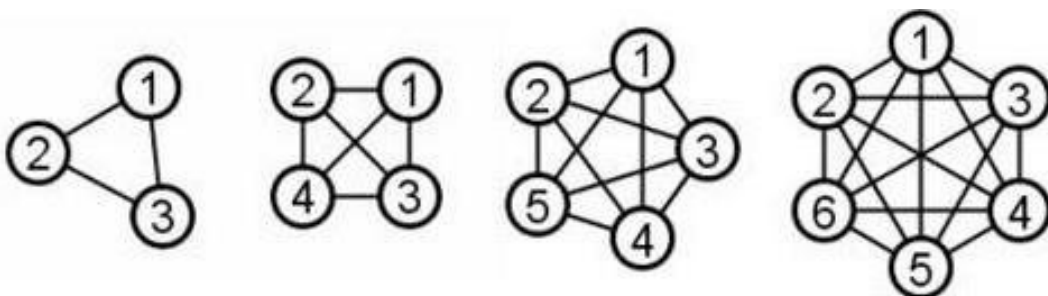


Figure 1.4. Instances of cliques.

- Two  $k$ -cliques are held to be adjacent if they share  $k-1$  nodes in common.
- A  $K$ -clique community is a set of each  $h$ -cliques ( $h \geq k$ ) that are reachable to each other through a series of adjacent  $k$ -cliques.

#### 1.4.6. Stages of Clique Percolation Algorithm

- Maximal clique detection. a  $k$ -clique is maximal if it is not limited in any other  $h$ -clique of  $h \geq k$ .
- Create clique overlap matrix. All entries in the matrix show the number of common nodes between the respective cliques.
- Change every element in the matrix greater than  $k - 1$  by 1.
- Recap the connected components from the matrix.

#### 1.4.7. Issues with Existing Methods

- The present graph partitioning methods usually require input parameters like the number of partitions and a measure. But it is usually not possible to know the required number of partitions in real world cases may not be from the same measure.
- Modularity based methods require the information regarding the entire structure of the network, which is not possible to determine in the case of real world large networks.
- Modularity based methods are also not able to determine overlapping communities. However, in real world networks, entities or nodes may participate in multiple communities.
- Clique percolation methods require extra space and computation overhead for computing and storing the overlap matrix.

## CHAPTER 2

### OPTIMIZATION OF ALGORITHMS

#### 2.1. COMMUNITY DETECTION

It is the method of discovering cluster in a netting so people group memberships are not explicitly stated. The test of cluster or community perception in real world plot that includes large sociable networks, web graphs and biologic netting is a trouble of substantial official attention and has conventional a lot of attention lately.

##### 2.1.2. Modularity Optimization

By presumption, high standards of modularity show good divisions. Thus, the division consistent its maximum value on assumed graph must be the better ,at least an actual good unique. That is the chief motivation of the modularity maximization, definitely the maximum common class of techniques to notice communities in graphs. Thorough optimization of  $Q$  is impossible, owing to the enormous digit of ways in which it is likely to divider a graph, even small. In addition, the true maximum is available of reach, then it needs been lately showed that modularity optimization is NP-complete trouble, thus it is perhaps unbearable to find the answer in a time rising polynomial, by the measure from graph. However, there are currently various algorithms talented to find quite decent approximations from modularity maximum sensible time. [16]

##### 2.1.3. Greedy Techniques

The earliest algorithm invented maximize modularity remained greedy technique of Newman (Newman,2004b). This is an agglomerative hierarchical clustering technique, saver collections of vertices are successively joined to larger

communities like that modularity increases afterward the merging. Unique beginning from  $n$  clusters, apiece containing single vertex. Limits are not. Firstly, current, they are added one through one during the method. Though, the modularity of divisions explored through the procedure is continuously calculated from the complete topology from graph, by way of we poverty to find the modularity maximum on the interplanetary of divisions from full graph. Addition an early edge to the usual of detached vertices reduces the amount of groups from  $n$  to  $n - 1$ , so it delivers novel division from graph.

The edge is chosen like that this stretches division the maximum upsurge of modularity by deference to the previous configuration. Completely other edges are extra based on the similar precept. Doubt the insertion of an edge does not alteration the, division i.e. the edge is internal to one from clusters previously shaped, modularity stays the same. The digit divisions of originate during the procedure is  $n$ , each by a dissimilar digit of clusters, from  $n$  to 1. The main worth of modularity in this subsection of divisions is the approximation modularity maximum assumed through the algorithm. All every iteration stage, one wants to compute the difference  $\Delta Q$  of modularity assumed by the merger of slightly two communities from running division, thus unique can select the better merger. Though, integration communities between there are no edges cannot ever lead to an upsurge of  $Q$ , thus unique has to check lone the couples of communities that are linked by verges, of that there cannot be extra of  $m$ . Meanwhile the control of each  $\Delta Q$  can be complete in constant period, that partion control needs time  $O(m)$ . Next deciding that communities are to remain merged, unique wants inform the matrix  $e_{ij}$  expressing the portion of edges between groups  $i$  and  $j$  from running partition (crucial compute  $Q$ ), that can be complete in nastiest case time  $O(n)$ . Meanwhile the algorithm requires  $n - 1$  repetitions (community alliance) track completion, its difficulty is  $O((m + n)n)$ , or  $O(n^2)$  on scant graph, so it allows one to do a clustering analysis on abundant larger networks of algorithm of Girvan and Newman (up to an order of 100000 vertices by present computers). Thus, Clauset indicate pointed out that, the update from matrix  $e_{ij}$  in Newman's algorithm includes a large digit of unusable processes, owing to the sparsity from adjacency matrix. That process can be performed extra efficiently by utilizing information structures for sparse matrices, such max-heaps, that rearrange

the information in the form of binary trees. Upheld the matrix of modularity variations  $\Delta Q_{ij}$ , that is as well as sparse, max-heap covering the largest rudiments of each row from matrix  $\Delta Q_{ij}$  also the labels from corresponding communities, and a modest array whose rudiments are the sums from elements of a piece row from old matrix  $e_{ij}$ . The optimization of modularity container carried out utilizing those three information structures, whose inform is much earlier of in Newman's method. The difficulty algorithm is  $O(md \log n)$ , So,  $d$  is the complexity from dendrogram describing the successive dividers found thru the execution from algorithm, that grows as  $\log n$  for graphs by a robust hierarchical structure. That graphs, the consecutively time from technique is thus  $O(n \log^2 n)$ , that lets analyze the community structure of actual large graphs, up to 106 vertices. In avaricious optimization of Clauset. is now one from insufficient algorithms that container utilized to approximation the modularity maximum on like large graphs.

This avaricious optimization of modularity inclines to speedily large communities at the expenditures of minor ones, that frequently harvests deprived values from modularity maxima. Propose "Danon" regularize the modularity variation  $\Delta Q$  produced through the merger two communities through the portion of edges Event to unique from two communities, the order to errand minor clusters. That trick leads to best modularity optima as likened the main formula of Newman, especially once communities are actual dissimilar in measure. Have renowned that, owing to the bias to large communities, in quick algorithm via Clauset et al. Is ineffectual, since it harvests actual unbalanced dendrograms, for that the relative  $d \sim \log n$  does not hold, then as a result the method frequently innings at its worst-case complexity. Recover the state they suggested a modification in that, each stride, unique seeks the community merger bringing the largest worth product from modularity variation  $\Delta Q$  times an issue (consolidation ratio), this peak communities of similar measure. In the method, there is a compromise between the gains in modularity balance from communities to merge, by a large gain in the speed procedure, that enables the analysis of systems with up to 107 vertices. It is important to note this modification frequently leads best modularity maxima of this found by the type of Clauset, minimum on large social networks.

Avert the forming of large communities remained future through Schuetz and Caflisch and contains in letting for the merger of extra community couples, in its place of one, at apiece repetition. That generates various “centers” about that communities are shaped, that grow together so this a focus hooked on few large groups is improbable. That modified version from avaricious algorithm is combined by a humble refinement procedure in that single vertices are enthused to the neighboring community that crops the maximum upsurge of modularity. In way needs the similar difficulty quick optimization through Clauset, then originates closer the modularity maximum. [17]

The accuracy from avaricious optimization container significantly better if the hierarchical agglomeration is beginning from about sensible intermediate configuration, rather of the separate vertices. Future, to begin from a shape obtained through merging the main remote vertices hooked on larger subgraphs, as said by the morals of an amount of topological resemblance between Subgraphs. Alike approach needs described. The first divider is like that no solitary vertex container enthused from its group to extra deprived of decreasing  $Q$ . Higher excellence Modularity's can be too achieved through applying refinement plans based on local hunt at various ladders from avaricious agglomeration. That refinement procedures are alike to the method proposed via Newman to recover the consequences. Additional decent strategy consists In alternating greedy optimization by stochastic perturbations from partitions .

A dissimilar greedy approach needs presented by Blondel et al. overall case of weighted graphs. Firstly, completely vertices from graph are place in dissimilar communities. The initial stage consists of a sequential sweep ended all vertices. Given vertex one computes the improvement in weighted modularity (Eq. 35) coming putting In the community of its neighbor  $j$  and choices the community from national that harvests the largest increase of  $Q$ , by way of long it is positive. At the finish sweep, unique obtains the initial level division. In additional stage communities are substituted via super vertices, then two super vertices are linked if is smallest an edge among vertices from corresponding communities. That state, the weight from edge between the super vertices is the sum weights from edges

between the represented communities the lower equal. In two stages from algorithm are thus recurrent, soft new hierarchical heights and super graphs. Noteworthy that modularity is continuously calculated of the firstly graph topology: function on super graphs allows unique to reflect the differences of modularity for dividers of main graph next amalgamation and splitting of groups of vertices. Thus, at some iteration, modularity cannot increase anymore, algorithm stop. The method is extra limited through storage demands of via computational time. The last grows such ( $m$ ), therefore the algorithm is very quick and graphs by up to 109 edges can be examined in a reasonable time on current computational resources.

The modularity maxima found through the technique are better of those found by the avaricious methods by Clauset et al. Yet, final communities inside the immediate area of vertices may be inaccurate and harvest spurious dividers in applied cases. Thus, it is not strong whether about from intermediate dividers could agree to meaningful hierarchical stages from graph. Furthermore, the consequences from algorithm be contingent on the order from sequential sweep ended the vertices. [18]

#### 2.1.4. Simulated Annealing

Simulated hardening is a probabilistic way for global optimization secondhand in dissimilar arenas and troubles. It contains in execution an examination space of likely states, watching for the global optimum of a meaning, about its maximum. Changes from one the national to additional occur by probability 1 if  $F$  upsurges next the alteration, then by a probability  $\exp(-\beta\Delta F)$ , So  $\Delta F$  is reduction from purpose and  $\beta$  is an file of stochastic noise, kind of inverse fever, which increases following each iteration. Noise decreases the risk that the scheme becomes trapped in local optima. About phase, the scheme converges a steady case, that can be an arbitrarily decent approximation maximum of  $F$ , contingent on how numerous states were traveled and how gradually  $\beta$  is varied. Replicated hardening was the initial employed for modularity optimization by Guimera` et al. In typical implementation (Guimera` and Amaral,2005) combines two kinds of moves: local moves, so a single apex is removed from one group to additional, occupied at random, global move, containing

of mergers and ruptures of communities. Ruptures can remain carried available in numerous distinct methods. The finest presentation is attained if unique optimizes the modularity of bipartition group, occupied as the remote graph. That is done over by simulated annealing, so one reflects lone separate vertex actions, fever is reduced pending it reaches the consecutively worth for the worldwide optimization. Worldwide changes decrease the risk of receiving stuck in local minima y must established to lead to much finest, optima of using just local changes. In useful requests, one classically combines  $n^2$  local changes by  $n$  global ones in one repetition. The way can possibly come actual close to the true modularity maximum, nonetheless it is sluggish. The real complexity cannot remain estimated, as it deeply depends on the limits chosen for the optimization (early, fever, cooling issue), not, lone on the graph measure. Replicated hardening can utilized for lesser graphs, by up around 10 vertices. [19]

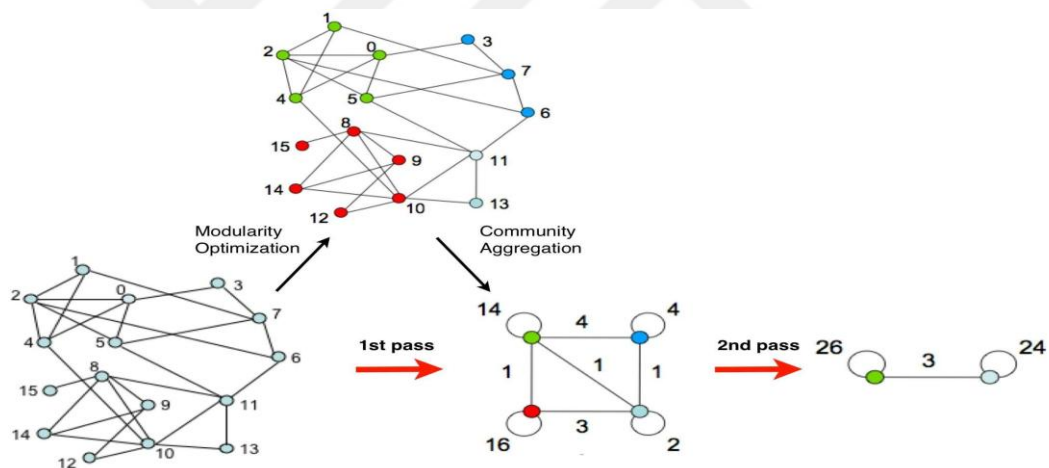


Figure 2.1. Hierarchical optimization of modularity by Blondel et al.

### 2.1.5. Extremal Optimization

Extremal optimization (*EO*) is a heuristic hunt procedure proposed through Boettcher and Percus, the instruction to achieve an accuracy comparable by simulated annealing, then by a substantial gain in computer time. The based on the optimization of local variables, stating the contribution of apiece unit from system to the global function at education. This method was utilized for modularity optimization through Duch and Arenas .Modularity can be indeed written as a sum

ended the vertices: the local modularity of an apex is the value from corresponding period in this sum. A suitability measure for a piece vertex is got through dividing the local modularity from vertex through its degree, thus in this case the measure does not depend on the grade of vertex and is appropriately normalized. Unique start from a random division from graph in two groups by the similar digit of vertices. At all repetition, the apex by the lowest fitness is shifted to the other cluster. The change dissimilar the partition, thus the local fitnesses of many vertices need to be recalculated. The process continues pending the global modularity  $Q$  cannot be improved any extra through the procedure. This method reminds unique of the Kernighan and Lin algorithm for graph partitioning nonetheless here the measures. The communities are determined through the process itself, while in graph partitioning they are fixed from the beginning. Next the bipartition, a piece cluster is considered as a graph on its own process is repeated, as long as  $Q$  increases for the dividers found. The process, proceeds deterministically from the assumed first partition, as unique shifts systematically the vertex with lowest fitness, and is probable to be trapped in local optima. Finest consequences can be obtained if one introduces a probabilistic selection, The which vertices are ranked based on their fitness values and one picks the apex of rank  $q$  with the probability  $P(q) \sim q - \tau(\tau - EO)$ . The algorithm finds actual good estimates from modularity maximum, and performs very well on the benchmark of Girvan and Newman. Ranking the fitness values has a cost  $O(n \log n)$ , that can be reduced to  $O(n)$  if heap information structures are utilized. Choosing the vertex to be shifted can be done by a binary search that amounts to an extra factor  $(\log n)$ . lastly, the digit of ladders needed to verify whether the running modularity maximum can remain improved or not is too  $O(n)$ . In entire complexity from technique is thus  $O(n^2 \log n)$ . We infer that  $EO$  represents a good tradeoff between accuracy and speed, though the usage of recursive bisectioning might lead to poor penalties on large networks by many communities. [20]

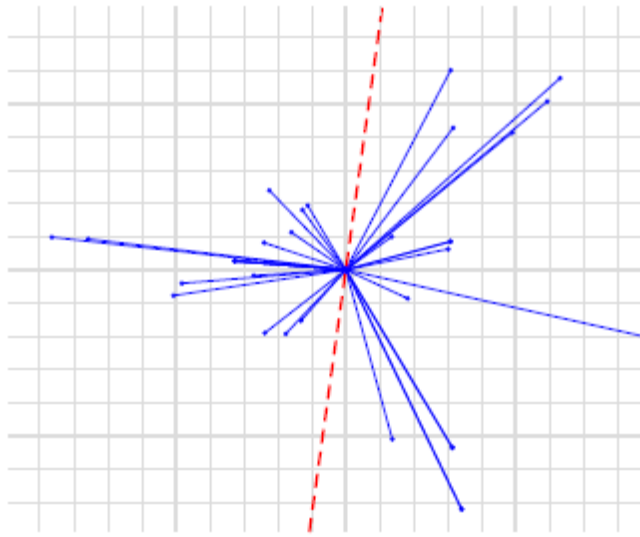


Figure 2.2. Spectral optimization of modularity by Newman .

## CHAPTER 3

### NUMERICAL ALGORITHMS APPLIED IN COMMUNITY DETECTION

#### 3.1. COMMUNITY ANALYSIS

A community is shaped by persons such that those within a group interrelate with each other extra often of with those outdoor the group. In addition, community is similarly mentioned to as a group, cluster, unified subgroup, or module. Communities can be experiential via influences in social media since social media lets persons to enlarge social networks connected. Social media allows persons to attach networks and discovery novel users of alike interests. Communities originate in social media are approximately classified into clear and understood groups. Clear groups are shaped by user payments, whilst understood groups emerge obviously through interactions. Subjects such community detection, creation, and evolution usually face community analyses.

Community detection often designate to the removal of understood groups in a network. The vital tests of community detections are that the meaning of a community can be personal, and the absence of ground truth brands community assessment difficult. Tang and Liu alienated community detection ways into four groups:

- Node-centric community detection, so each node contents certain possessions such as comprehensive mutuality, reachability, and node grades, incidence of inside and external ties. (Instances comprise cliques, k-cliques, and k-clubs).
- Group-centric community detection, so a group needs to content sure properties (for instance, least group masses).

- Network-centric community detection, so groups are shaped based on separation of Network hooked on disjoint circles (instance are spectral gathering and modularity expansion).
- Hierarchy-centric community detection, so the box is to size hierarchical structure of communities. This lets the analysis of a network by dissimilar resolves. Typical means are discordant clustering and agglomerative clustering. Social media networks are extremely dynamic. Communities container enlarge, psychiatrist, or melt in dynamic networks. Community development aims to learn the designs of a community finished time by the presence of dynamic network connections. Originate that the additional networks you must in group, the extra probable you are to join, and communities by cliques produce more gradually of those that are not firmly linked. [21]

### **3.2. COMMUNITY DETECTION ALGORITHM**

The basic idea of ComTector is to size up communities about meeting cliques. We respect meeting maximal cliques as the gathering kernels and transmit available agglomerative procedure to associate the break vertices to their neighboring kernels based on a future coldness measure. Lastly, the got small communities resolve be correctly attuned so as stop the network after existence alienated into minor pieces.

### **3.3. ALGORITHM COMPLEX NETWORKS**

As that maximum complex networks continuously must a huge component, we early use an effectual algorithm Community Detection in Complex Networks 5 Peamc to count all maximal cliques in this huge constituent. Since a maximal clique is a comprehensive sub-graph, it container signify the contiguous association among dissimilar objects so is the thickest community in the assumed network. [22]

### **3.3.1. Algorithm of Girvan and Newman**

It is the foremost algorithm from contemporary age of community detection in graphs. It is hierarchical discordant algorithm, in which relations are iteratively detached based on the worth from betweenness, which couriers the digit of straight paths between couples of nodes that pass finished the link. In its maximum general implementation, the technique of connection removal ends once the modularity from subsequent division grasps maximum. The modularity of Newman and Girvan is a healthy recognized excellence function that approximations the goodness of a divider based on the contrast between the graph at pointer and a null model, which is a group of random graphs by the same predictable grade sequence from chief graph. The algorithm needs complexity  $O(N^3)$  on a thin graph. [23]

### **3.3.2. Quick Greedy Modularity Optimization**

This technique is essentially a quick application of preceding technique future by Newman. Start from a usual of remote nodes, the relations from chief graph are iteratively added similar to crop the largest likely increase from Modularity of Newman and Girvan at altogether stage. The quick type Clauset, Newman and Moore, that usages additional well-organized information structures, needs a complexity of  $O(N \log^2 N)$  on scant graphs. [24]

### **3.3.3. Exhaustive Modularity Optimization**

The objective is the similar in the preceding algorithm; nonetheless, the exactness the last estimate from maximum is distant higher, owing to the thorough optimization, the expenditure computational haste. The last cannot remain spoken in closed, in the bags overhead, it be contingent on the limits utilized optimization. [25]

### **3.3.4. Quick Modularity Optimization**

This is Multistep method based on a local optimization of Newman-Girvan modularity in the area of altogether node. Next division is recognized in this method,

communities are substituted Super nodes, soft a lesser biased network. The process is thus iterated, pending modularity (that is permanently calculated by admiration to the chief graph) does not upsurge any additional. This technique proposals a reasonable compromise between the accuracy estimate from modularity maximum, that is healthier, of that brought via greedy methods similar the unique by Clauset et al. Overhead, and computational complexity, that is fundamentally linear in the digit of relations from graph by Blond el et al . [26]

### 3.3.5. Algorithm Hierarchical Technique

Actually, it is a discordant hierarchical technique, so relations are iteratively detached based on the worth edge gathering coefficient, that is clear as the ratio between the amount of rings based on the link main likely digit of rings that can remain based on the link. The edge gathering co- efficient is a local amount, so its calculation is not as heavy as that of edge betweenness, that harvests a important development in the complexity algorithm, that is  $O(N^2)$  on a scant graph. Additional major change from the *GN* algorithm is the discontinuing criterion for procedure that be contingent on the possessions from communities themselves and not on the standards of excellence function similar modularity. Radicchi et al. careful two kinds of communities:

- Strong communities are groups of bulges such this the interior degree of apiece node surpasses its outside point.
- weak communities are groups of bulges such this the gross interior grade for nodes from group surpasses their gross outside point. [27]

### 3.3.6. Cfinder

This is local algorithm future Palla et al. appearance for communities that may overlay, i.e. part nodes. Communities are clear as the largest likely subgraphs that can be traveled by progressing k-cliques crossways the network, so a k-clique reels by revolving around any of component (k - 1)-cliques (are relations once (k = 3). The complexity of this process can be high, as the computational time wanted to find all k-cliques of a graph is an exponentially growing purpose from graph

measure, nonetheless in applied requests the technique is somewhat rapid, allowing one examine schemes by up to 105 nodes. [28]

### 3.3.7. Markov Cluster Algorithm

This is an algorithm industrialized by S. Van Dongen, that simulates an odd dispersal procedure on the graph. Unique onset from the right stochastic matrix (or dispersal matrix) from graph, that is got from the adjacency matrix from unique graph by in-between the rudiments of all streak their sum. Also one calculates an number power of this matrix (typically the square), that harvests the likelihood matrix of random walk later number of paces equivalent the digit of controls from right stochastic matrix considered. That stride is named expansion. Very each component matrix is elevated to about power  $\alpha$ , in instruction to enhance insincerely the likelihood from walker to be stuck within community. This pace is called rise. The growth and rise paces are iterated pending one gets the adjacency matrix of a woodland (i. e. a detached tree), whose mechanisms are the communities. That technique, widely utilized in bioinformatics, is strongly reliant on the excellent from limit  $\alpha$ . Its complexity can remain lowered to  $O(Nk^2)$  if, next all rise stride, lone the  $k$  largest rudiments from resultant matrix are reserved, while the other are usual to zero. [29]

### 3.3.8. Structural Algorithm

Now the trouble of discovery the better cluster structure of a graph is twisted hooked on the trouble of optimally squeezing the data on the structure from graph, thus this one can recuperate as carefully as likely the chief structure once the compressed data is deciphered. This is attained via calculating the minimum of a meaning that couriers had better compromise between the negligible provisional info between the chief compressed info (maximal correctness to the chief info) best compression (lower likely data to transmit). The optimization meaning is carried available by simulated hardening, that brands the algorithm slow, though unique could continuously energy for rapidly and fewer accurate optimization. [30]

### **3.3.9. Dynamic Algorithm**

This method is based on the similar code as the preceding unique. The variation is that previous one was squeezing the data on the structure from graph, now unique needs to bandage the info of a dynamic procedure captivating residence on the graph, specifically a random walk. The optimal density is achieved over by optimizing an excellence function that is the Least Description Distance random walk. A mixture of greedy exploration and fake annealing by Rosvall and Bergstrom carry this optimization container available somewhat rapidly. [31]

### **3.3.10. Spectral Algorithm**

This is a technique based on spectral possessions from graph. The notion is these eigenvector mechanisms consistent to nodes in the similar community must need alike values, communities are healthy recognized. Donetti and Muñoz focutilized on the eigenvectors from Laplacian matrix. That careful an incomplete digit of eigenvectors, roughly  $g$ , and signified each node from graph as regular opinion in a Euclidean  $g$ -dimensional interplanetary, whose organizes are the eigenvector mechanisms corresponding to the node. The spots are thus gathered by traditional hierarchical gathering methods. From resultant divisions, one choices that maximizes the modularity by Newman and Girvan. The technique is somewhat rapid when lone a few eigenvectors are calculated, that is characteristically the case, and this can be complete by the Lanczos technique. [31]

### **3.3.11. Expectation-Maximization Algorithm**

Now Bayesian implication is utilized to infer the better, appropriate of an assumed perfect the information signified via the actual graph structure. The golly fit is expressed by a probability that is maximized by income expectation expansion method. These principals to a scheme of self-consistent reckonings that can be resolved by repetition preliminary appropriate early conditions. The reckonings can be resolved rather rapid and large schemes can be analyzed in this technique up, pending 106 nodes. A nice feature from technique is it discoveries the maximum

pertinent group structure graph, whether the groups are communities or not (graphs by Multipartite structure the classes are somewhat anti-communities, consequently there are actual few links confidential the groups). difficulty of the technique is the fact this one needs to feed the digit of groups, that is classically not recognized priori. [32]

### **3.3.12. Potts Model Approach**

This technique is based on the minimization from Hamiltonian of Potts similar spin perfect; consequently, the spin national represents the association from node in assumed community. A choice parameter allows one span many community scales, the actual minor to actual large communities. The relevant scales are recognized by examination for the stability from separations obtained assumed values from resolve limit. This is complete by calculating the resemblance of separations got for the similar resolve parameter, nonetheless start dissimilar early conditions. Tops in resemblance spectrum agree stable pertinent separations. The technique is rather rapid; its difficulty is somewhat Superliner for relations from graph. [33]

## **3.4. DYNAMIC ALGORITHMS**

This Unit describes way-retaining processes successively on the graph, concentrating On spin-spin connections, random walk and synchronization. Q-state Potts perfect. The Potts perfect is amongst the maximum common replicas in arithmetical procedure. It shows a scheme of spins that container be in q unlike conditions. The communication is ferromagnetic. It favors spin arrangement; consequently, at zero infection altogether spins are in the alike national. If Antiferromagnetic connections are current too, the ground national from scheme might not the one so altogether spins are allied; nonetheless, a national so unlike spin standards coexist, in its bunches. If Potts spin variables are allocated to the apexes of a graph by community structure, connections are between neigh boring spins, it is probable that the topological clusters could remain recovered the similar-valued spin groups from scheme, by way of there are numerous additional interactions inside communities of external. Based on this nation, inspired via and for paper via Blatt, Wiseman and

Domany, Reichardt and Bornholdt future technique to notice communities this charts the graph on a q-Potts model nearest-neighbors interactions. The Hamiltonian from perfect. Its energy, a quantity of two opposing terms, unique preferring spin alignment, unique Antialignment. The comparative weight from two terms is uttered through a limit, which is classically set worth from the compactness of edges graph. The impartial is to discovery the ground national from scheme, to minimize the energy. That container be done fake hardening beginning a shape so spins are randomly allocated to the apexes digit of conditions q is actual high. The execution is quite debauched penalties do not be contingent on q. The way likewise lets to classify vertices communal between communities, of the contrast of divisions' consistent global then local vigor minima. Additional lastly, Reichardt and Bornholdt derived community framework, in that noticing community structure is equal to discovery the ground national of a q-Potts model spin glass. Their preceding technique then modularity optimization are healthier as singular cases. Meeting communities container remain discovered via likening divisions by the similar (lower) vigor, and hierarchical structure container remain examined through tuning a limit temporary on the thickness of edges of orientation graph deprived of community structure. [34]

### 3.5. RANDOM WALK

Utilizing random walks discovery communities originates of the notion that random hiker spends an extended time confidential a community owing to the in elevation thickness of edges and resulting amount of paths that might remain shadowed. Zhou secondhand random walks to describe a distance between couples of apexes : the coldness between  $i$  and  $j$  is the regular amount of limits that a random walker needs to cross reach  $j$  beginning from  $i$ . Close apexes are probable to fit to the similar community. The worldwide attractor of a vertex  $i$  is the closest apex to  $i$ , while the local attractor of  $i$  is its closest neighbor. Two kinds of communities are clear, rendering to local or worldwide attractors: vertex needs to remain place in the similar community of its attractor and of altogether apexes for that  $i$  is an attractor. Communities necessity remain lower subgraphs, they not comprise lesser subgraphs that are communities rendering to the chosen standard. Requests to real and false

networks suggestion that the technique container find expressive divisions. In a consecutive newspaper, Zhou familiarized measure of different amid apexes based happening the coldness defined overhead. The amount similar the meaning of distance based on structural correspondence of, so the rudiments from adjacency matrix are substituted through the consistent detachments. Graph divisive are obtained by a divider procedure that, beginning from the graph as a lone community, does successive splits based on the standard that vertices in the alike cluster should be less unlike of a consecutively threshold, that is reduced through the procedure. The ladder of divisions derived via the technique is illustrative of real community structures for many real then artificial graphs. Other labor, Zhou and Lipowsky clear detachments by biased random hikers, though the bias is due to the detail that walkers change specially to apexes distribution large digit of neighbors by the beginning vertex. Lately and Pons presented a various distance degree between vertices based on random walks. The coldness is intended from the likelihoods that the random walker changes from a vertex to additional in secure digit of strides. Apexes are thus grouped hooked on communities finished hierarchical gathering. The technique is quick, consecutively conclusion in time  $O(n^2 \log n)$  on scant graph. [35]

### **3.6. COMMUNITY DETECTION IN SYNCHRONIZATION**

It is additional, able dynamic procedure disclose communities in graphs. If oscillators are located on the vertices, by firstly random stages, and must nearest-neighbor connections, oscillators in the similar community synchronize initial, while a filled synchronization needs a lengthier period. Thus, if unique shadows the time fruition from process, conditions by synchronized groups of apexes can be fairly steady and long-lived, consequently they container remain effortlessly recognized. This stood initial exposed thru Arenas, D'iaz-Guilera and P'erez-Vicente. They secondhand Kuramoto oscillators, which remain joined two-dimensional courses able by a proper incidence of oscillations. Doubt the communication link exceeds verge, the dynamics principal's synchronization. Stadiums. Presented that the stage. Development from system discloses some middle time scales, consistent topological scales from graph, to dissimilar heights of organization from apexes. Hierarchical community structure

container remain exposed this method .Based on the similar principle, Boccaletti .  
Intended community detection way founded on synchronization. [36]



## CHAPTER 4

### COMPARISON OF THE NUMERICAL METHODS

#### 4.1. COMPARISON OF ALGORITHMS

We liken with dissimilar gathering algorithms and heuristics, emphasis our analyzes on two features. Firstly, we are absorbed the excellence from clusters different ways are talented to discovery. Essentially, we will similar to comprehend how healthy algorithms do in footings of optimizing the idea of community excellence. Additional, we are absorbed in counting the structural possessions from clusters recognized by the algorithms. By way of resolve understand, there are important compromises in network community detection aimed at assumed impartial purpose, estimate algorithms are frequently biased intelligence that reliably discovery groups with specific interior structure. We disruption the experimentations hooked on two portions. Firstly, liken two graph dividing algorithms remain hypothetically well unspoken then remain based on two actual dissimilar methods: the spectral based Local Spectral dividing algorithm, flow-based Metis+MQI. After that, we reflect numerous experiential methods network community detection effort well in repetition. [37]

##### 4.1.1. Flow and Spectral Methods

We associate the Local Spectral Dividing algorithm by the flow-based Metis+MQI algorithm. In last is an astonishingly real experiential way for discovery low conductance cuts, which contains of initial by means of the debauched graph-dividing database. [38]

Metis the riven the graph hooked on two equivalent measured smithereens, n consecutively MQI, an careful flow-based method for discovery the lowermost

conductance cut whose minor lateral in limited in unique the two semi graphs selected through Metis. [39]

All the two approaches (Local Spectral and Metis+MQI) remained track recurrently by randomization on a piece of our graphs, toward crop large group of applicant clusters of numerous measures, in addition a lower cover curve. [40]. In this part the lower cover curves aimed at Local Spectral and Metis+MQI remain planned correspondingly by way of a red line and green streak in Figure 1(right), then as couples of black appearances in Figure 4.1.(highest) and Figures 9 then 12. Letter the Metis+MQI curves are usually lower, representative this way is usually well of Local Spectral the insignificant job of discovery cuts by low conductance. By way of we will prove by means of the throw conspiracies of Figure 4.1. bunches originate through the local Spectral Technique frequently must other qualities that recompense their inferior conductance notches. Equally unsafe instance, numerous from uncooked Metis+MQI clusters are inside detached, which appears similar an actual bad stuff for an unproven community. Through difference, the Local Spectral Way continuously revenues linked clusters. Confessing that this is a large improvement for local Spectral, we afterward that adapted the groups of raw Metis+MQI groups through excruciating all inside detached group hooked on its several linked components. thus, in all throw conspiracies of Figure 4.1. blue spots signify uncooked local Spectral clusters, that are inside connected, whereas red spots signify broken-up Metis+MQI groups, which are too inside linked. [41].

Lease us see the highest row of throw conspiracies of Figure 4.1. which likens the conductance, notches (as a purpose of cluster measure) from groups of clusters shaped through the two algorithms. On mist of blue opinions (Local Spectral clusters) dishonesties usually overhead the mist of red opinions (Metis+MQI clusters), once more exemplifying that local Spectral inclines be a feebler way for plummeting conductance notch. In extra part, we discovery that Local Spectral and Metis+MQI incline to classify alike smithereens actual minor balances, nonetheless at somewhat larger balances gap unlocks awake among the red cloud blue cloud. On this middle measure balances, Metis+MQI remains discovery lower conductance scratches of local Spectral.

Nevertheless, the Local Spectral procedure revenues smithereens this are inside additional dense. That is exposed in the central row of Figure 4.1. so for apiece from (linked) smithereens for that we planned a conductance in the highest noise; we are now intrigue the regular straight path distance between random bulge couples in part. In these conspiracies, we understand this in the similar measure diversity so Metis+MQI is making obviously lesser conductance linked groups, Local Spectral is making smithereens by obviously smaller interior trails, i.e., smaller width groups. In additional arguments, the Local Spectral smithereens are extra “compressed” That consequence is particularly marked in the DBLP affiliation network, whereas it too demonstrations active in the Enron email network. [42].

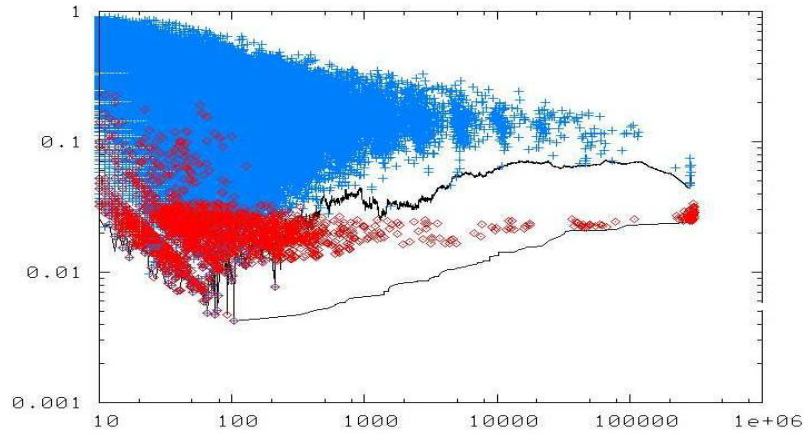
Lastly, in the lowest noise of Figure 4.1. we present the subject of interior vs. outside cuts, that is somewhat this none from current algorithms is openly optimizing. That are once more scatter conspiracies presentation the alike usual of Local Spectral and Metis+MQI smithereens as beforehand, then the y-axis is outside conductance alienated via interior conductance. Outside conductance is the amount this we typically plot, specifically the conductance from cut that splits the group of graph. Interior conductance is the notch of a low conductance cut intimate the group. This remains we income-persuaded subgraph on the groups nodes, thus discovery premium conductance cut confidential the cluster. Thus, liken the relations from conductance from leaping cut interior conductance. Intuitively, must and dense communities would have minor relations, preferably under 1.0, that would nasty those groups are well unglued of the break from network and they are too inside well linked and firm cut once more. Nevertheless, the three lowest row conspiracies of Figure 4.1. demonstration the relations. Opinions overhead the flat streak are groups are calmer cut inside of they were to remain cut from the break from network; though opinions under the streak are groups that were comparatively informal cut of the network and are inside well linked. Understand this here the difference among the two ways is fewer strong. Then, Local Spectral discoveries clusters that must inferior (high) leaping cut conductance, though similar clusters are too inside additional dense (have interior cuts of advanced conductance).also , Metis+MQI discoveries groups that must healthier (inferior) leaping cut conductance but are too inside informal to cut (must interior cut of lower conductance). Therefore, once one

receipts the relation from two amounts we detect qualitatively such performances. Nonetheless, that Local Spectral appear to reappearance clusters by advanced alteration the relation of outside interior conductance. On minor measure scales Metis+MQI tends to stretch groups of somewhat healthier lower relation, though at larger groups the benefit energies Local Spectral. has stimulating importance for the requests graph dividing meanwhile (contingent on the specific request area measures and possessions of clusters one goals to excerpt) also Local Spectral or Metis+MQI can the way of outstanding.

Moreover, see that here are typically no relations well under 1.0, but for actual minor measures. This is significant, as it appears suggestion that large groups are comparatively firm to cut from the network, then are thus inside informal to riven hooked on multiple sub-clusters. That explain additional feature our results:

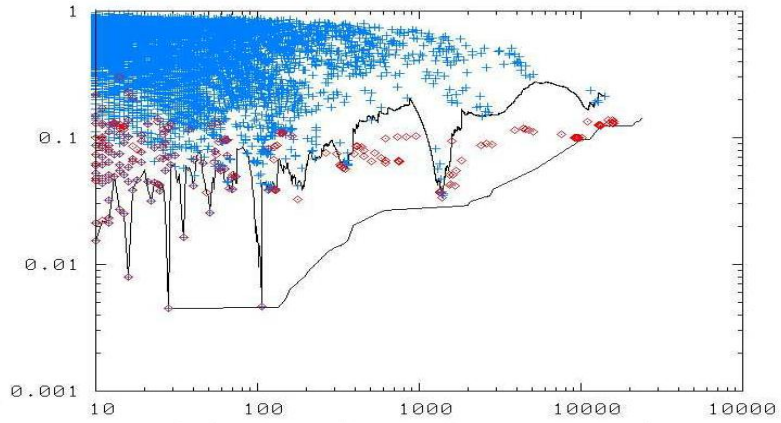
Lesser communities under  $\approx 100$  nodes are confidential dense well unglued of the rest from network, though larger groups are so firm distinct this wounding them from network is extra luxurious of wounding them inside. Community similar circles of nodes that are healthier linked inside of outwardly do not appear be in large real world which networks, but at actual minor measure balances. Lastly, in Figure 4.2. we too exemplify the changes among spectral which and flow-based groups through picture some instance subgraphs. On two subgraphs exposed happening the left of Figure 4.2. were originate in local Spectral, thus the two subgraphs exposed on the right of Figure 4.2. were originate via Metis+MQI. In two couples of subgraphs must qualitatively unlike arrival: Metis+MQI smithereens appearance longer then tougher of the Local Spectral smithereens. Very from subgraphs, cover roughly 500 nodes, that is around the measure gauge so the changes among the algorithms twitch demonstration up. The that bags, Local Spectral needs adult cluster available bit historical its normal boundaries, whereas Metis+MQI has threaded composed a twosome of dissimilar thinly linked bunches. We comment that the propensity of Local Spectral trade off cut excellence in errand of the part density is not fair an experiential remark, it is a well-unspoken importance from theoretic analysis of spectral dividing ways.

AuthTopap-dbip



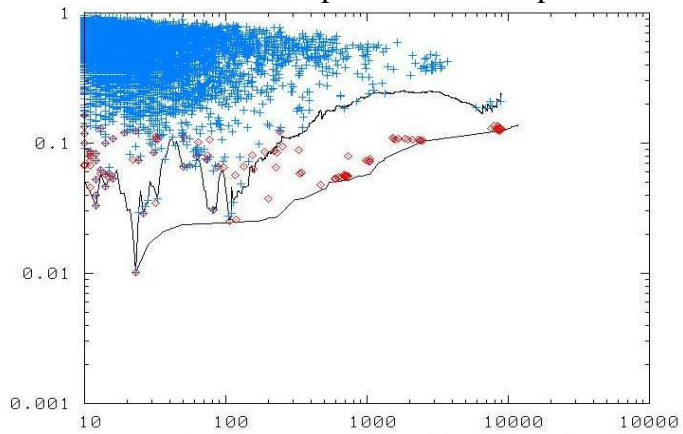
a) K (number of nodes in the cluster)

Email enron



b) K (number of nodes in the cluster)

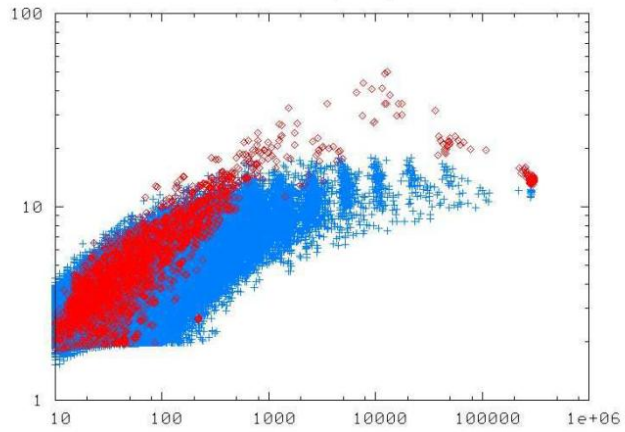
Coauth-astro-ph Coauth-astro-ph



c) K (number of nodes in the cluster)

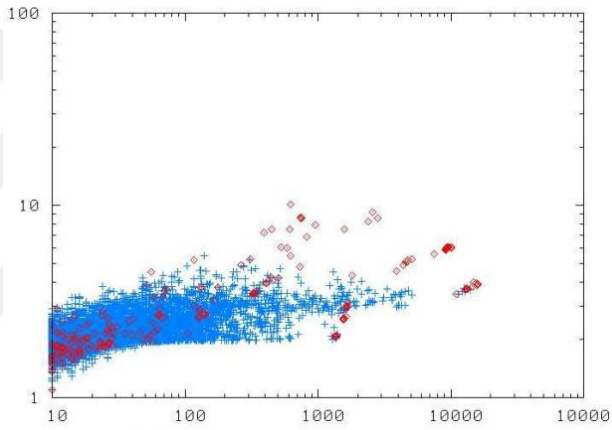
Figure 4.1. Comparison of Local Spectral.

AuthTopap-dbip AuthTopap-dbip



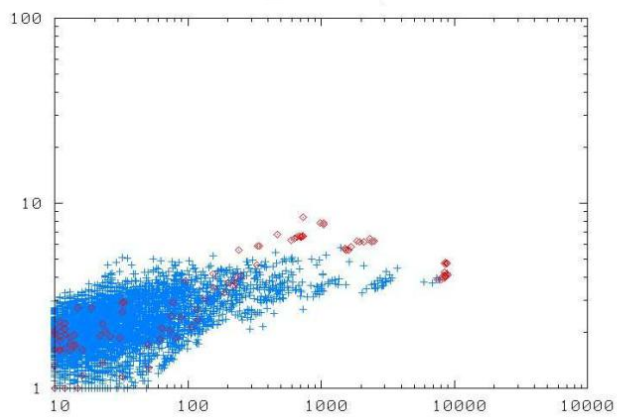
d) K (number of nodes in the cluster)

Email enron



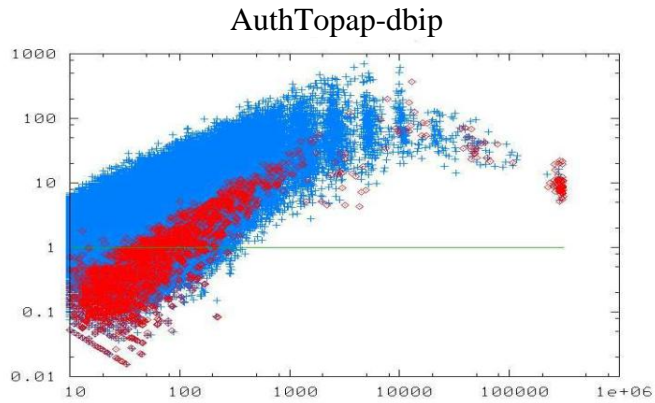
e) K (sum of nodes in the cluster)

Coauth-astro-ph

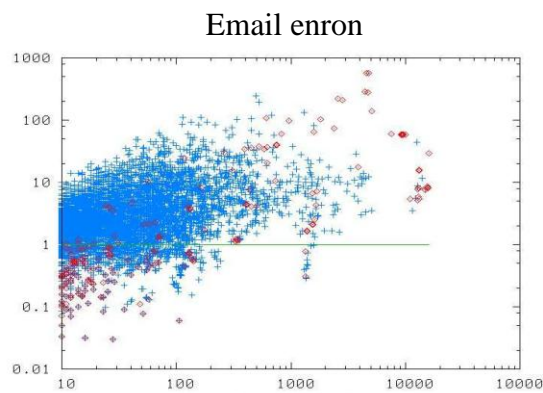


f) K (number of nodes in the cluster)

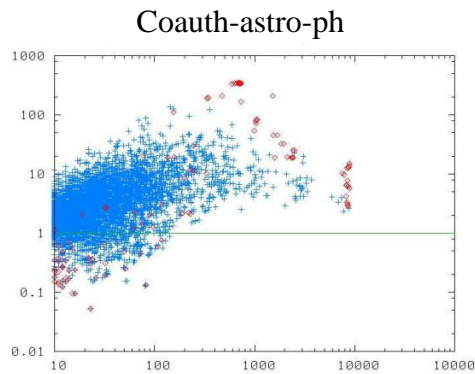
Figure 4.1. (continuing).



g) K (number of nodes in the cluster)



h) K (number of nodes in the cluster)



i) K (number of nodes in the cluster)

Figure 4.1. (continuing).

Compared of Local Spectral (blue) and Metis+MQI (red) on connected groups  
 Highest: the conductance of the bounding cut. Middle: the average shortest path length in the cluster. low: the ratio of the external conductance to the internal conductance. Usually Metis+MQI yields best cuts whereas Local Spectral yields

clusters that are more compact: they have shorter path lengths and best internal connectivity.

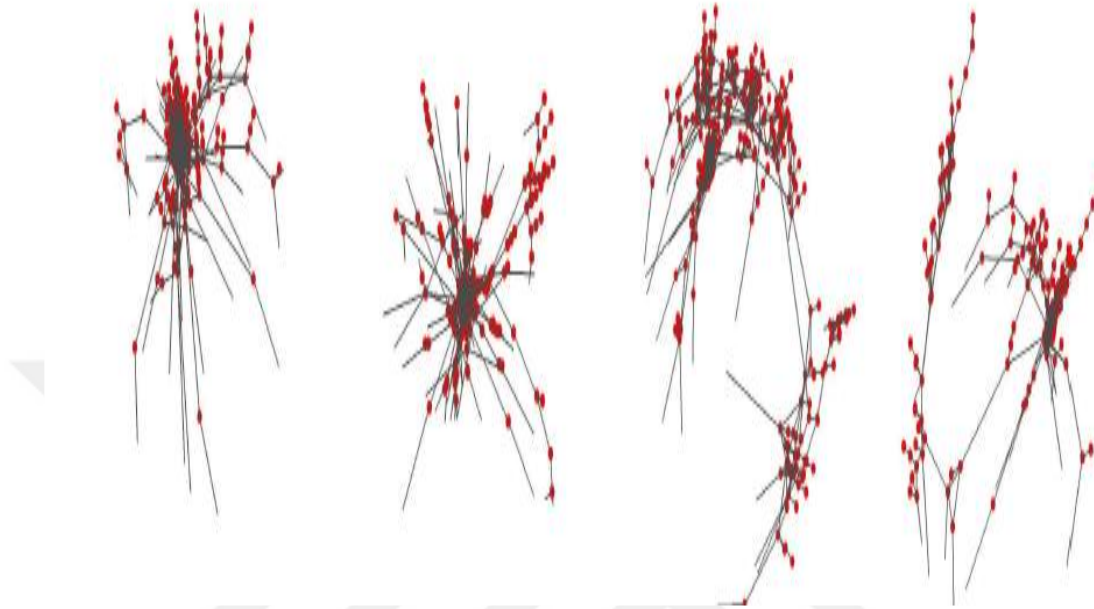


Figure 4.2. Two instances of cluster found by the Local Spectral algorithm .

#### 4.1.2. Community Detection Algorithms

We reflect several additional, typically experiential, algorithms and liken their presentation in removing clusters of several measures. As opinion of orientation, we use consequences got via the Local Spectral and Metis+MQI algorithms.

We must lengthily tested by numerous variants from international spectral way, together the normal eigenvector based implanting on line, and an SDP-based implanting in hypersphere, equally by the normal hyperplane-sweep turning technique and flow based turning technique that comprises MQI as the last stage. Furthermore, singular post-processing canister be complete to get also linked or detached groups.

We as well experimented by a practical type from Leighton- Rao algorithm, like to the implementation labeled in. This outcomes are particularly stimulating since the Leighton-Rao algorithm that is based on multi-commodity movement, delivers a

self-governing checked on Metis, on spectral techniques usually. In Leighton-Rao algorithm needs two stages.

The initial stage, edge bottlenecks are shaped through routing large amount of commodities finished network. The modified our package optimize conductance (instead of normal relation cut score) by hire the predictable request between a couples of bulges be relative to the creation for points. The next phase, turning algorithm is used to change edge bottlenecks hooked on real cuts. Our way was sweep ended node collations shaped via consecutively Prim's Minimum Straddling Sapling algorithm the congestion graph, firstly for large amount of unlike early bulges, by means of range of dissimilar balances avoid quadratic track time. The used two differences the ways, one that crops linked groups, and then additional that container too, produce detached circles. [43]

The highest noise of 4.1.2. We, demonstration Leighton-Rao arcs for three sample diagrams. Local Spectral and Metis+MQI arcs are haggard in black, so as the Leighton-Rao arcs of linked then perhaps detached groups are haggard in green and magenta correspondingly. For minor average balances, the Leighton-Rao curves of linked circles look like the Local Spectral arcs, so as the Leighton-Rao arcs for perhaps detached groups look like Metis+MQI curves. That moreover settles the structure of groups shaped through Local Spectral and Metis+MQI.

In large rulers, the Leighton-Rao curves sprout up then develop much inferior of Local Spectral and Metis+MQI. That Leighton-Rao needs dilemmas finding decent big groups is not astonishing since expander diagrams are recognized remain the worst case contribution for the Leighton-Rao approximation assurance. Large real networks cover an expander-similar core that is necessarily met large scales.

We notice this Leighton-Rao fixes not effort poorly large balances on each caring of graphs. (In part, for large low dimensional mesh-like diagrams, Leighton-Rao is an actual economy and real way for conclusion cuts completely scales so as our local spectral way develops impracticably sluggish at average to large balances.)

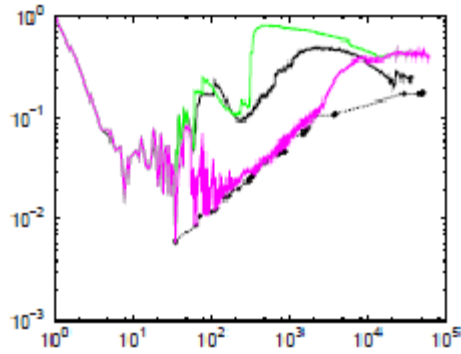
In income this based the structure on network and measures of bunches unique is absorbed in dissimilar graph dividing ways must remain used. Therefore, as Leighton-Rao is a suitable way for mesh-similar graphs, it has dilemmas in intermixed expander-similar core of large networks.

Finally, furthermore the overhead estimate algorithms-based ways for finding low-conductance cuts, we too tested with an amount of more experiential methods this incline effort well the repetition. In specific, we liken Graclus and Newman's modularity enhancing package (we mean too, it as Dendrogram). Graclus efforts divider graph hooked on smithereens restricted via low conductance cuts through income of a kernel k-means algorithm. The competed Graclus recurrently, requesting for  $2, 3, \dots, i, i, * \sqrt{2} \dots$  smithereens. Afterward that we slow measure and conductance of completely subsequent pieces.

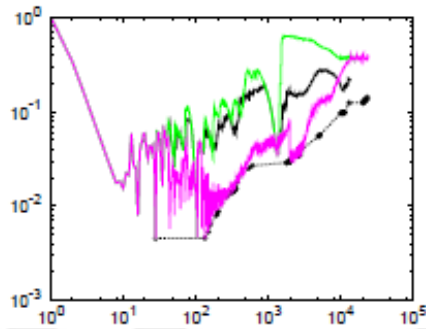
Newman's Dendrogram algorithm concepts recursive dividing of graph (this is dendrogram) after the bottom up through recurrently erasing living edge by the maximum betweenness importance. A level dividing could afterward that be got through wounding the equal that stretches the uppermost modularity notch, nonetheless in its place of responsibility that, we slow the measure of conductance all piece clear through a subtree in dendrogram.

The lowest line of Figure 4.2 gifts these consequences. Over our two normal curves remain haggard in black. In addition, lower-envelopes from Graclus or Dendrogram opinions are unevenly alike those shaped through Local Spectral, that income equally ways incline creator thick clusters at completely degree scales. Usually, Graclus inclines to crop a diversity of groups of healthier conductance of Newman's algorithm. Also sign this in circumstance of Epinions social network astrophysics coauthor vessel network Graclus inclines favor larger bunches of Newman's algorithm. However, Graclus seems discovery groups of ten or extra bulges, so as Newmans's algorithm too excerpts actual minor smithereens. In overall, clusters shaped by also Graclus or Dendrogram remain qualitatively alike those shaped through Local Spectral. In income that level however Local Spectral remains computationally inexpensive then informal scales actual large networks, in

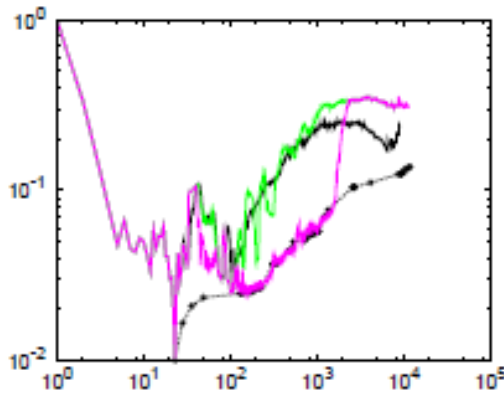
excellence of recognized clusters is similar that repaid through methods for example Graclus and Dendrogram that remain meaningfully extra luxurious on large networks similar as those we careful.



(a)



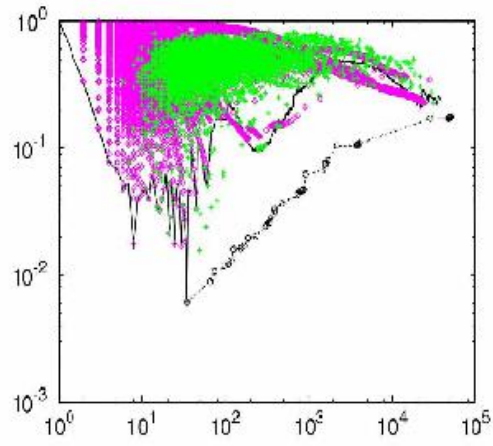
(b)



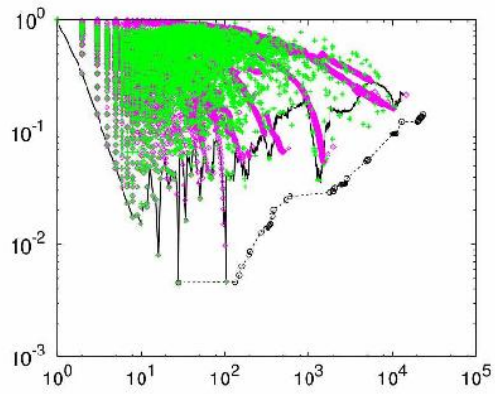
(c)

Leighton-Rao: connected clusters (green), disconnected clusters (magenta).

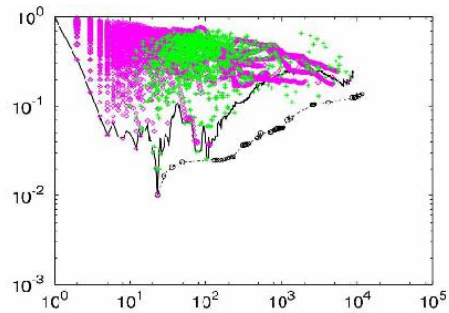
Figure 4.3. NCP plots obtained via Graclus and Newman's Dendrogram algorithm.



(d)



(e)



(f)

K (number of nodes in the cluster)

Figure 4.3. (continuing).

- |              |             |              |           |
|--------------|-------------|--------------|-----------|
| — Locspec    | ● SDPLB     | — Conn LRao  | ● Graclus |
| ----- MetmQI | ----Spes LB | ● Disconn LR | ● Dendro  |

Compared of the several algorithms on EPINIONS, EMAIL-ENRON, and CA-ASTRO-PH. Highest row: NCP plots for linked (green) and disconnected (magenta) pieces from our implementation of the Leighton-Rao algorithm..

## 4.2. COMPARISON OF OBJECTIVE FUNCTIONS

We appearance additional impartial meanings that imprisonment this instinct and are general. The community detection works. In overall, there are two standards of attention when rational around how decent a cluster is a usual of bulges. The early is the amount of limits between the memberships from cluster next is the amount of limits between the memberships from cluster disruption of the network. We collection impartial purposes hooked on two clusters. The initial group, we mention to Multi-criterion scores, syndicates both standards (sum of edges confidential amount of edges crossing) hooked on a solitary impartial function, so as the next group of impartial purposes employments only a solitary from two criteria (volume from cluster or amount of limits cut).

### 4.2.1. Multi-Criterion Scores

Let  $G(V, E)$  be purposeless graph by  $n = |V|$  nodes and  $m = |E|$  limits. Let  $S$  be the usual of bulges in group, so  $n_S$  is the digit of bulges in  $S$ ,  $n_S = |S|$ ;  $m_S$  digit of limits in  $S$ ,  $m_S = |\{(u, v) : u \in S, v \in S\}|$ ; and  $c_S$ , the digit of limits on border of  $S$ ,  $c_S = |\{(u, v) : u \in S, v \notin S\}|$ ; and  $d(u)$  is the grade of node  $u$ .

We reflect the next metrics  $f(S)$  this imprisonment the idea of excellence group.

Lower worth notch  $f(S)$  (once  $|S|$  is reserved constant) means an extra community similar usual of nodes.

- Conductance:  $f(S) = \frac{c_S}{2m_S + c_S}$  events the portion of entire edge size that facts external the cluster.
- Expansion:  $f(S) = \frac{c_S}{n_S}$  events the quantity of edges per bulge that fact external the group.

- Internal density:  $f(S) = 1 - \frac{ms}{ns(ns-1)/2}$  is the interior edge compactness from cluster S
- Cut Ratio:  $f(S) = \frac{cs}{ns(ns-ns)}$  is the segment all likely edges departure the cluster.
- Normalized Cut:  $f(S) = \frac{cs}{2ms+cs} + \frac{cs}{2(m-ms)+cs}$ .
- Maximum-ODF (Out Grade Fraction):

Max  $\sum_{u \in S} \frac{\langle (u,v) : u \notin S \rangle}{d(u)}$  is the supreme segment of limit of a node cement external the cluster.

- Average-ODF:  $f(S) = \frac{1}{ns} \sum_{u \in S} \frac{\langle (u,v) : u \notin S \rangle}{d(u)}$  is average fraction of nodes' edges cement external
- Flake-ODF:  $f(S) = \frac{\langle (u : u \in S, (u,v) : u \in S) \rangle < d(u)/2 \rangle}{ns}$  is the segment of bulges in S this have less edges cement confidential of the external group.

We thus simplify the NCP plot: all cluster measure k we discovery usual of nodes S ( $|S| = k$ ) this enhances the select community score  $f(S)$ .n plot community notch as meaning of  $k$ . is not strong how enterprise optimization way this would, agreed cluster measure k community score meaning  $f(S)$ , discovery the usual S that reduces the meaning, is greatest community. The do the optimization subsequent a method: we, usage the Local Spectral technique that initial from kernel node then travels the group structure about kernel node, consecutively Local Spectral from apiece node, we get millions of groups nodes of numerous measures, numerous of that are meeting, n for piece such usual nodes, we calculate the community score  $f(S)$  and discovery the finest group of each measure. [44]

Figure 4.4. Considers the overhead eight-community notches. Show this smooth though scores span dissimilar ranges they completely knowledge qualitatively alike conduct, so groups up to measure ca. 100 must increasingly healthier scores, so as the groups overhead ca. 100 nodes develop fewer community similar their measure upsurges. That might look astonishing, nonetheless it would be rather predictable, as very these impartial meanings stab toward capture the similar basic instinct they recompense groups of bulges that must numerous edges inside and scarce cement out from clusters.

There are, though, understated changes between several scores. For instance, smooth however, Flake-ODF shadows similar overall tendency as conductance, the grasps the minimum around an order the scale future of conductance, regularized cut, cut ratio score or in Average-ODF. Moreover, Maximum-ODF exhibitions the conflicting conduct as it obviously favors lesser clusters and remains essentially level for clusters larger of around numerous hundred nodes. That is stimulating as this displays the next tendency: if unique scores the community through the, worst-case node by means of Available Grade Portion (Maximum-ODF) n lone slight clusters must no outliers and then stretch decent scores. That one considers the regular portion of nodes edges cement external the group (Average-ODF) in detached meaning closely shadows the drift of conductance. In addition, if one considers the portion of nodes in the group by extra from edges cement confidential of external the group (Flake-ODF), n large clusters remain favored.

In the cut relation score, in sign this it is not actual, even, in the intellect this smooth for large groups its values look to vary rather lot. That shows this groups of like measures can must very several statistics of edges cement the respite the network. The footings from interior density, differences are all minor the internal density spreads the extreme for clusters of measures about 10 nodes n rapid increases to 1, that income larger clusters become progressively thinner. For big groups this is not chiefly astonishing as the standardization issue upsurges quadratic ally by the cluster measure.

This canister stand compared, by the Expansion notch those events the digit of edges cement external the cluster then regularizes in the digit of bulges (not the sum of completely likely edges).

This experiences suggest this Interior Density and Maximum- ODF remain not chiefly decent events of community notch cut relation score might not favored due high alteration. Flake- ODF appears favor larger groups, so conductance, growth, regularized cut, then Average-ODF altogether exhibition qualitatively alike performances and stretch finest scores like clusters.

Furthermore, we done knowledges so we removed groups based on their conductance notch thus calculated the standards of additional community notches (for these alike clusters). That is ways we fixed not optimize apiece community score distinctly, nonetheless somewhat we enhanced conductance therefore calculated standards of other impartial purposes on these finest conductance pieces. In procedure from plots continued essentially unchanged, that advises that similar sets of nodes attain comparatively alike scores irrespective of which specific idea of community score is secondhand (conductance, development, regularized cut, otherwise Average-ODF). This displays that four community notches are extremely connected then in repetition wish almost like clusters. [45]

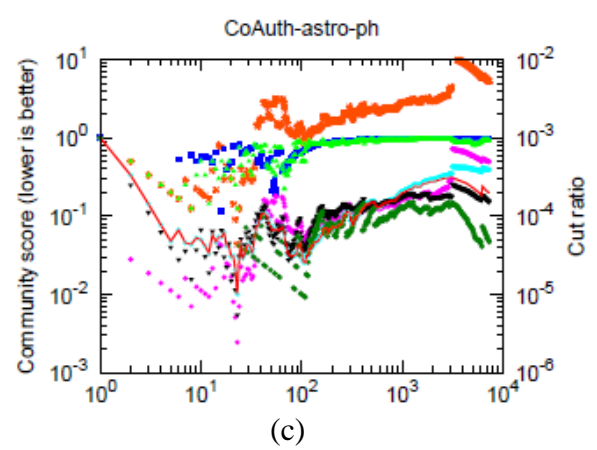
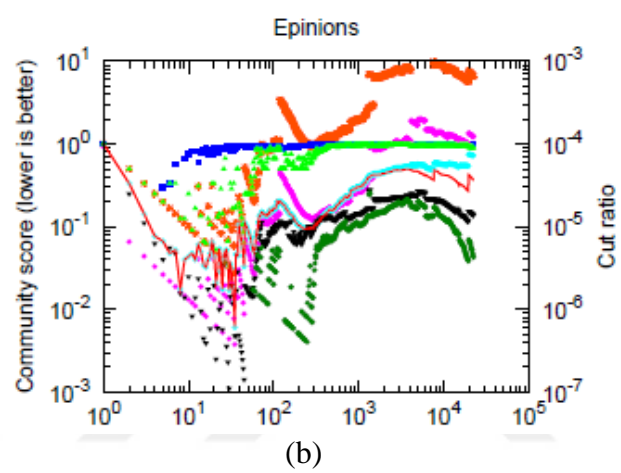
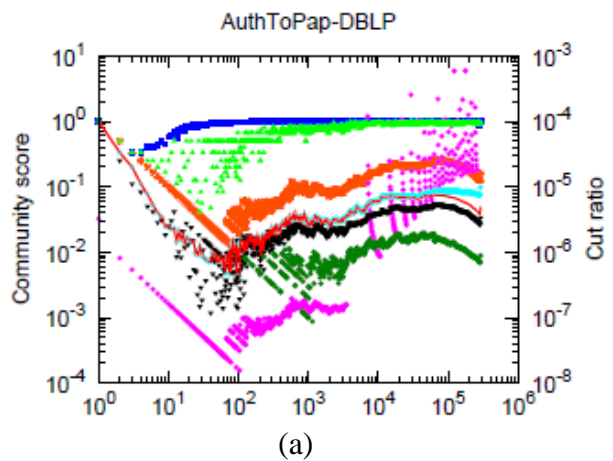


Figure 4.4. Several ideas of community score as mission of group measure.

- Condustance — Internal Denisty ● Normalized cut ● Avg ODF ●
- Expansion ● Cut Ratio ● Maximum ODF ● Flake ODF ●

Various notion of community score as function of cluster size. Very community scores have qualitatively same behaviors. They tend to decrease at first, which means clusters get increasingly more community such as their size increases.

#### 4.2.2. Single Criterion Scores

Following we likewise reflect community notches this reflect solitary standards. Unique this instance is Modularity that is one from greatest extensively utilized approaches to evaluate in excellence of a separation of a network hooked on components or communities. Aimed at an assumed divider of a network hooked on groups, the modularity events the amount of inside community edges, comparative to null model random graph by the similar grade delivery. [46]

Then we consider the next four ideas of excellence from community this remain based on consuming one additional from two standards from preceding subset:

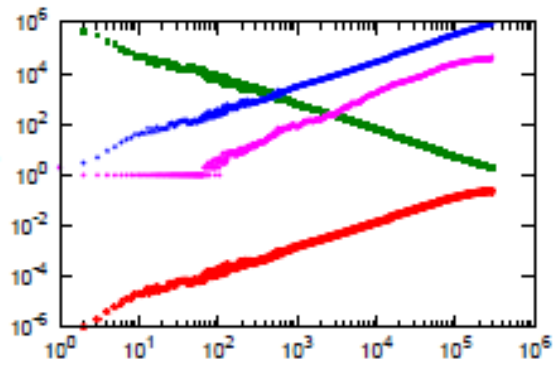
- Modularity:  $\frac{ms}{E(ms)}$  is the predictable amount of limits between bulges in usual  $S$  in random graph by the similar node grade order.
- Modularity ratio: is other meaning from modularity, so we income the relation from amount of edges between the bulges of  $S$  predictable amount of such limits below the null-perfect.
- Volume:  $\sum_{u \in S} d(u)$  is amount grades of bulges in  $S$ .
- Edges cut:  $c^S$  is amount of limits needed remain detached disconnect bulges in  $S$  of the break from network.

Figure 4.5 displays the equivalent from NCP plot so now in its place conductance we usage four events. An overall remark modularity inclines increase unevenly monotonically to the bisection from network. In must not be astonishing then modularity events the “size” of communities, by (experimentally, for huge real-world networks) slight preservative correction, volume obviously increases by community measure. In addition, the modularity relation tends to reduction to the bisection from

network. This also must not be surprising, since it includes dividing the capacity by a minor amount. Penalties in Figure 4.1 shows that, by admiration to the modularity the “well” community in slightly from networks needs around semi of bulges, so as, by admiration to modularity ratio, in “well” community in slightly from networks needs two or three bulges.

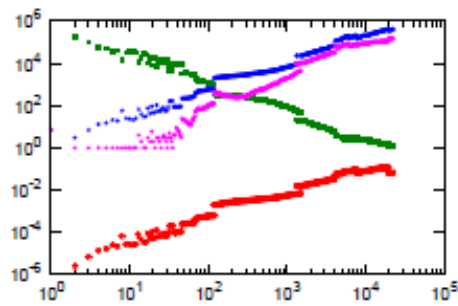
Send off sideways arguments around community excellence impartial meanings, note that, so as the conductance then connected events are discriminative, that they wish dissimilar types of clusters, contingent on the kind of network existence careful, modularity inclines to follow the similar overall pattern for altogether from classes of networks. In smooth sideways of community connected interpretations, conductance (equally long as various of the bi-criterion objects) has qualitatively dissimilar kinds of performances for actual dissimilar kinds of graphs (example, low dimensional graphs, expanders large real world community then data networks), while modularity and additional single criterion objects perform of qualitatively same methods for altogether varied courses of graphs.

AuthTopap-DBLP



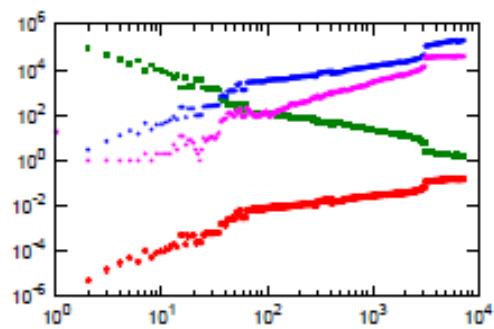
(a)

Epinions



(b)

CoAuth-astro-ph



(c)

Figure 4.5. Four concept of community class based on modularity.

Modularity ● Modularity Rito ● volume ● edges cut ●

The curves do not exhibit any particularly interesting no monotonic trends. Partitions of roughly semi the network tend to have better modularity.

### 4.3. RESULT

Yet we have inspected several heuristics then estimate algorithms for community detection and graph dividing. Shared in these methods is completely lone approximately discovery moral cuts, lone about optimize in worth from impartial function. Therefore, the clusters they classify deliver lone a higher bound on the factual minimum healthier clusters. become best notion how decent those higher bounds remain, we calculate theoretic lower bounds. Now we discussion ,spectral lower certain the conductance cuts of random balance, then a connected SDP based lower certain on conductance of slightly cut this gulfs graph hooked on two smithereens of equivalent size.

Lower limits are typically not calculated applied reasons, nonetheless in its place are used gain visions into dividing algorithms and possessions of graphs so algorithms do well and unwell.as will, note this lower limits are “moveable” the intelligence this they not assurance this cluster of specific score is somewhat they are fair proverb there is not cluster best score. Initial, we present the representation:  $\vec{d}$  is a column course from graph node grades,  $D$  is square matrix whose lone nonzero admissions are the graph’s node grades on slanting,  $A$  is the adjacency matrix  $G$ ;  $L = D - A$  is thus the non-normalized Laplacian matrix of  $G$ ;  $\mathbf{1}$  is course of 1’s; and  $A \cdot B = \text{trace}(ATB)$  is the matrix dot-product worker. Now, reflect next optimization trouble (that is healthy recognized to be equal an Eigen trouble):

$$\lambda_G = \min \left\{ \frac{x^T L x}{x^T D x} : x \perp \vec{d}, x \neq 0 \right\} \quad (4.3)$$

Let  $\hat{x}$  be vector attaining the minimum value  $\lambda_G$ . Thus  $\frac{\lambda_G}{2}$  is the spectral lower bound conductance of slightly cut in graph, irrespective of equilibrium, so as  $\hat{x}$  defines spectral implanting from graph on line, which turning algorithms can be functional get actual cuts this can serve higher bounds several measures.

Following, we deliberate an SDP-based lower certain on cuts that divider the graph hooked on two circles of precisely equivalent size. Reflect:

$$\lambda_G = \min \left\{ \frac{x^T L x}{x^T D x} : x \perp \vec{1}, x \neq 0 \right\} \quad (4.4)$$

Then let  $\hat{Y}$  be a matrix reaching the bottom worth  $CG$ . Thus  $CG$  is an inferior certain on mass slightly cut by perfect scope equilibrium, then  $2CG/Vol(G)$  is lower certain conductance of somewhat cut by faultless capacity balance. In fleetingly reference that meanwhile  $Y \succ 0$ , we can sight  $Y$  as a Gram matrix this container remain factored  $RR^T$ . After that sounds of Rare organizes of inserting from graph hypersphere. Over, rotating algorithms container practical the inserting to get real cuts container assistance advanced bounds.

In spectral and SDP embedding clear now remained basis the wide investigations by worldwide spectral dividing approaches. it is the inferior limits that anxiety us. The Figure 12 display the spectral and SDP lower limits for three instance graphs. In spectral lower certain, which smears to cuts of any equilibrium, is haggard as a flat red streak that seems near the lowest apiece conspiracy. The SDP lower bound, that only smears cuts unraveling specific size, specifically  $Vol(G)/2$ , seems a red triangle close right lateral from apiece plot. (Notice that intrigue this opinion obligatory us to usage volume somewhat of number of bulges for x-alliance from plots.)

Obviously, lower certain  $Vol(G)/2$ , is advanced from spectral lower certain which smears at lesser scales. Additional highly, the lower certain at  $Vol(G)/2$ , is advanced of our advanced bounds numerous lesser balances. That designates two significant opinions:

- It display that finest conductance groups are instructions of greatness healthier of finest clusters containing of semi the edges.
- It proves this graph dividing algorithms do well several measure scales. Completely each graph dividing algorithms, of the least from NCP plot is near spectral lower certain, the groups semi size are over close hypothetically healthier likely clusters. That indicates that graph dividing algorithms we

careful now do a decent work both discovery finest likely groups and bisecting network.

For, instance, the initial plot of Figure 4.1. so in black we conspiracy conductance arcs got through the Local Spectral in addition Metis+MQI algorithms. By a red ruined streak plot lower certain the, better likely cut in network, then by red threesome plot lower certain for cut splits graph in two equivalent capacity bits , so that, the factual conductance bend (which is stubborn to calculate) dishonesties below black, nonetheless overhead red streak and red threesome. From useful viewpoint this proves that graph dividing algorithms, Local Spectral and Metis+MQI specific, do a decent occupation of removing clusters at altogether measure balances. In lower bounds express us the conductance arc that preliminary at higher left angle early has energy down then spread least close the flat dashed streak Spectral lower bound  $n$  abruptly rise then trimmings up overhead the red threesome (SDP lower bound). That confirms many clothes:

- Graph dividing algorithms do healthy at completely amount scales, by way of the removed clusters must scores close the hypothetical finest.
- The qualitative form in NCP do not object of graph dividing algorithms or else specific impartial meanings, nonetheless somewhat it is an inherent stuff from large networks.
- The lower bounds semi the measure from graph demonstration this our incapability discovery large decent conductance groups is not faults of algorithms. In its place like large decent conductance “groups” only not those networks.

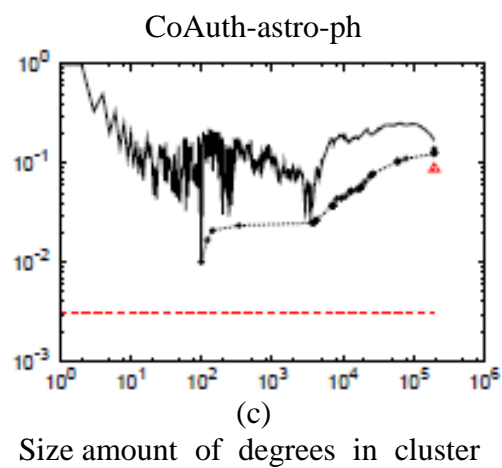
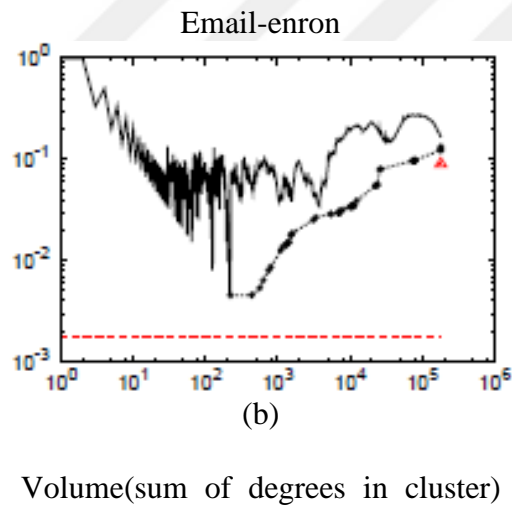
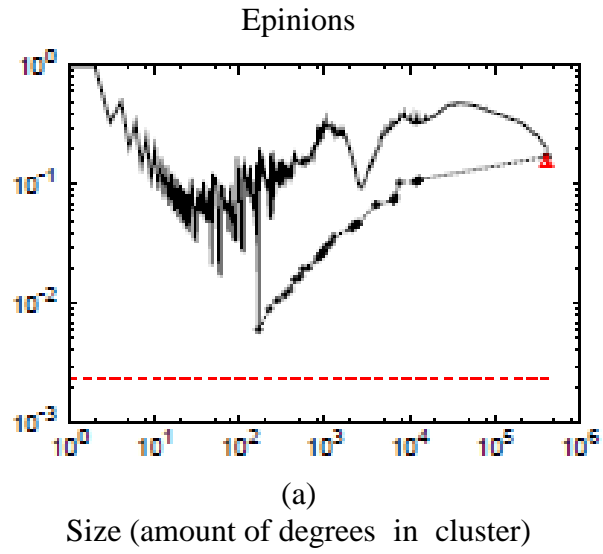


Figure 4.6. Lower bounds on better conductance cut.

In black, we plot conductance curves as obtained by Local Spectral and Metis+MQI. Lower bounds on conductance of slightly cut (Spectral lower bound, dashed line) and the cut separating the graph in semi (SDP lower bound, red triangle) display that both algorithms do a moral work on finding better conceivable and better balanced cut of the network.



## CHAPTER 5

### CONCLUSION

Fashionable this thesis, we inspected in a methodical way an extensive variety of network community detection means inventing of the hypothetical computer science, and methodical computing. Our experimental consequences validate that decisive the gathering structure large networks is astoundingly difficult. In overall, algorithms well, improve the community notch meaning finished a choice of degree scales, clusters got comparatively close to hypothetical lower limits. Nevertheless, near classes of networks so convinced algorithms do sub-optimally. Though, countless shared community excellence objectives incline to exhibition, like qualitative conduct, by actual minor clusters attaining the healthier scores, many community excellence metrics such as the usually use modularity work in qualitatively, dissimilar methods. It is stimulating; instinctive ideas of cluster excellence tend to nosedive as single violently optimizes the community score. Example, through violently optimizing conductance, single, gets detached or barely-linked clusters that no agree to instinctive communities. In designates that somewhat stimulating fact that estimated optimization from community score presents a methodical prejudice hooked on the removed clusters, comparative the combinatorial optimum. Often as in circumstance of Local Spectral, as if prejudice is in detail favored later the resultant clusters are extra compact reform correspond to additional instinctive communities. In connects actual nicely regularization ideas in machine education and information analysis, so distinct consequence footings and its flatness. In our rank here, unique is trading off the conductance of  $t$  It is stimulating, instinctive ideas of cluster excellence tend to nosedive as one violently optimizes the community notch. The case, through violently optimizing conductance, unique gets detached or barely connected groups that no agree to instinctive communities. This designates in rather stimulating fact that estimated optimization from community score familiarizes a

methodical bias addicted to the removed clusters, comparative to the combinatorial best. Often, in circumstance of Local Spectral, this bias is detail preferred then the resultant clusters are extra dense reform correspond to extra instinctive communities leaping cut from cluster. In inside group compactness. Belongings of regularization thru assessed calculation are pronounced owing the chancy sparsity of actual networks. In what way solemnize an idea of regularization through estimated computation extra usually is intriguing query raised by our consequences.



## REFERENCES

1. M. Girvan M. Newman and . “Community structure in social and biological networks”, *Proceedings from National School of Sciences from USA*, 99 (12): 7821–7826, (2002).
2. R. Andersen, F. Chung, and K. Lang. “Local graph dividing using PageRank vectors”. *Pages* 476–487, (2006).
3. Mark EJ Newman. “Detecting community structure in networks”. *The European Physical Journal B-Condensed Matter and Compound Systems*, 39 (3): 331–330, (2004).
4. Aaron Clauset, Mark EJ Newman, and Cristopher Moore. “Finding community structure in actual large networks”. *Clauset*, 70 (6): 066111, (2004).
5. Jiyang Chen, Osmar Zaiane, and Randy Goebel. “Detecting communities in social networks using maxmin modularity”. *SDM 2009*, pages 979–989, 2009.
6. Jussi M Kumpula, Mikko, Kimmo Kask , and Jari. “Consecutive algorithm” *for quick group percolation*. 78(2):026109, (2008).
7. Fergal Reid, Aron McDaid, and Nel Hurley. “Filtration computation in complex networks”, *IEEE* pages 274–281., (2012).
8. Jiyang Chen, Osmar Zaiane, and Randy Goebel. “Detecting communities in social networks using maxmin modularity”. *SDM 2008*, pages 979–988, (2009).
9. Pothus, A., Simon, and Liou K-P. “Dividing sparse matrices by eigenvectors of graphs”. *Vol-11*: 430-452.
10. Girvan, M. and Newman, M.E.J. “Discovery and evaluating community structure in networks”. *Physical*, Vol-68: 026113.
11. Bron, C., and Kerbosch, J. “Finding all cliques of a purposeless graph”. *Communications from ACM*, Vol-16: 575-577.
12. Wilkinson DM, Huberman BA “technique for finding communities of related genes. *Proceedings from National Academy Science from USA*”, Vol 102, *Suppl* , page 5241–5248. (2004)
13. Newman, M.E.J. “The Structure and Meaning of” *Complex Networks*.Vol-44: 165-255.

14. Clauset, A, Newman, M.E.J. and Moore, C. “Finding community structure” in *actual large net*.
15. Newman, M.E.J. “Modularity and community structure in networks”. *PNAS*, Vol-104: 8577.
16. Gunes, I. and Bingol, “Community Detection in Complex Networks Using Agent”s. *Co RR*, Vol: abs/Cs/0610129.
17. Newman, M. E.J. “Detecting community structure in networks”. *Phys. J.* Vol-38:330.
18. Fortunato, S. and Barthelemy, M. “Resolution bound in community detection”. *Vol-104:36-41*, (2007).
19. Tyler, J. D. M. Wilkinson, and. A. Huberman, , in “Communities and technologies” , *page*. 81-96. (2003).
20. Mackay, D.J.C., , “Info Theory, Inference, and Education Algorithms”, *Cambridge*, UK. (2003).
21. Scott JP “Social Network Analysis”s. *Sage Publications Ltd.*, London i (UK). (2000).
22. Boccaletti S, Latora V, Moreno Y, Chavez M, Hwang Du *Complex Networks*, Vol 424, page 173–306. (2006).
23. M. Girvan and M. E. Newman, *Proc. Natl. Acad. Sci.* USA, 98, 7821 (2002).
24. A. Clauset, M. E. Newman, and *C. Moore*, *Phys. E* 75, 066111 (2004).
25. R. Guimer and . A. N. Amaral, *Nature* 433, 895 (2005).
26. F. Radicchi, C. Castellano, F. Cecon , V. Lreto, and D. Paris, *Proc. Natl. Acad. Sci.* USA, 102, 2659 (2004).
27. C. Bron J. Kebosch and Commun, I. *ACM* i 17, 574 (1974).
28. F. Radichi, C. Castellano, F. Cecon , D. Loreto, and D. Paris, *Proc. Natl. Acad. Sci.* USA i 101, 2658 (2004).
29. G. Pall, I. Der\_eny , I. Farks, and T. Vcsek, *Nature* 436, 914 (2004).
30. S. van Dogen, Ph.D. thesis, *Dutch National Research Institute Mathematics and Computer Science, University* Utrecht, Netherlands (2002).
31. M. Rosvall and T. Bergstrom, *Natl. Acad. Sci.* USA 105, 1118 (2008).
32. C. Lanczos, J. Res. Natl. Bur. *Stand.* 45, 255 (1950).

33. A. P. Dempster, N. M. Laird, and D. B. Rubin, *J. Roy. Stat. Soc. B* 39, 1 (1977).
34. Kirkpatrick S, Gelatt CD, Vecchi MP Optimization via simulated hardening. *Science*, Vol 220, No 4598, page 670–679. (1983)
35. M. Molloy and B. Reed, *Random Struct. Algor.* 7, 165 (1995).
36. S. Gregory, in *Complex Networks*, edited via S. Fortunato, R. Menezes, G. Mangion, and V. Nicosia of *Education on Computational Intelligence*, pages. 45,60.
37. R. Andersen and K. Lang. Local graph dividing utilizing *PageRank vectors*. Page 477,490, 2006.
38. G. Karypis. A quick and high excellence multilevel system for dividing irregular graphs. *Pages* 3560,395, 1998.
39. G. Gallo, M. Grigoriadis , and R. Tarjan. Quick parametric extreme flow algorithm and applications. *Pages* 30, 55, 1989.
40. J. Leskovec, K. Lang, an . Dasgupta, and M. Mahoney. “Statistical properties of community structure in large social and information networks”. *Pages* 697,705, 2008.
41. I. Dhillon, Y. Guan, and B. Kulis. “Weighted graph cuts minus eigenvectors: multilevel approach”. 29 (11):1944, 1957, and 2007.
42. M. Girvan M. Newman and Community structure in social and organic networks. “Proceedings from National School of Sciences from USA” *UJS*, 99 (12):7821, 7826, and 2002.
43. T. Leighton S. Rao and I. “Multi commodity max-flow min-cut theorem sir use in scheming approximation algorithms”. *Journal from ACM* 46 (6): 787–832, 1999.
44. C. Castellano, F. Ceccon , V. Loreto , and D. Paris . *Important and dandifying communities in networks*.
45. G. Flake, S. Lawrence , and C. Giles. Efficient identification of web communities. *International Conference on Information Discovery and Information Mining*, pages 151/159, 2000.
46. M. Newman. Modularity and community structure in networks. *Minutes from National Academy of Sciences from USA* 103 (23):8577–8582, 2006.

## **RESUME**

### **PERSONAL INFORMATION**

Surname, Name: AMNA.M.M.SALEM

Place of Birth: Al-Biyda

Nationality: LIBYA

Marital Status: Married

Phone: 05457674562

Email: amnasalem8883@gmail.com

### **EDUCATION**

FOREIN LANGUAGES: Arabic, English and Beginner Turkish

HOBBIES: Reading, Travelling and writing.